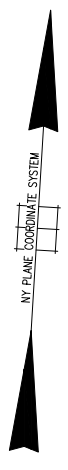


N 232,700

ST.

SEE DETAIL 'A'

McLOUGHLIN PRIVATE CEMETERY



HARBOR

GARVIE

AVE.

BLK. 236

BLK. 237

BLK. 235

BLK. 238

BLK. 239

BLK. 240

BLK. 241

BLK. 242

COUNTY OF NASSAU

489

41.32A(C)

643

504

5.25A(C)

8.45A(C)

605

4.43A(C)

1.79A(C)

5.63A(C)

543

542

544

545

546

547

548

549

550

551

552

553

554

555

556

557

558

559

560

561

562

563

564

565

566

567

568

569

570

571

572

573

574

575

576

577

578

579

580

LA.

DICKSON

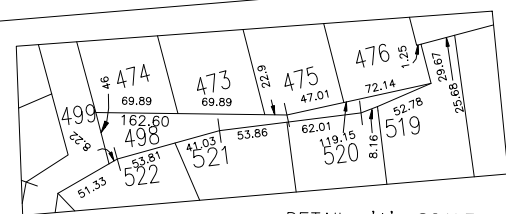
E 2,099,400

N 230,700

HEMPSTEAD

E 2,095,900

FAIR HOUSING DEVELOPMENT FUND CORPORATION
LOTS: 514 TO 540 INCLUSIVE



DETAIL 'A' SCALE - 1" = 80'

LEGEND	
COUNTY LINE	---
TOWN LINE	---
VILLAGE LINE	---
SCHOOL DISTRICT LINE	---
PROPERTY LINE	---
SPECIAL DISTRICT LINE	---
BLOCK LIMIT	---
LOCATOR POINT	*
TAX MAP PARCEL NO.	246
CALCULATED ACREAGE	794(C)
DEED ACREAGE	1764
SCALED DIMENSION	327(S)
DEED DIMENSION	185.69
REFERENCE MAPS	
MAP NO.	

POLICE		FIRE PROTECTION	
DIST		DIST	
WATER		SANITARY	
LIGHTING		REFUSE & GARBAGE	
LIBRARY		REFUSE DISPOSAL	
FIRE		SEWAGE COLLECTION	

SPECIAL DISTRICTS	
PUBLIC PARKING	
SEWER	
PARK	
IMPROVEMENT	
SIDEWALK	

MUNICIPALITIES	
TOWN OF:	
HEMPSTEAD	
NORTH HEMPSTEAD	
OYSTER BAY	
CITY OF:	
GLEN COVE	
LONG BEACH	
VILLAGE OF:	
SCHOOL DISTRICT	
Glen Cove	8
See Cliff	24

SPECIAL DISTRICTS	
DRAINAGE	
FIRE HYDRANT RENTAL	
GARBAGE	
ESCALATOR	
WATER POLLUTION CONTROL	
County, College, Police HQ-GC	1

Nassau County
Department of Assessment
James E. Davis, Acting Assessor
Land & Tax Map
Map Last Revised: June 9 2017

SEC. 21
BLK. A

SHEET 1 OF 4

CODE	SPECIAL	DISTRICT	WITHIN	CODE	SPECIAL	DISTRICT	WITHIN	CODE	SPECIAL	DISTRICT	WITHIN
891	1										

COPYRIGHT 1989 NASSAU COUNTY