

N 147,800



EAST

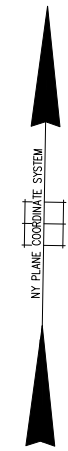
N 147,550



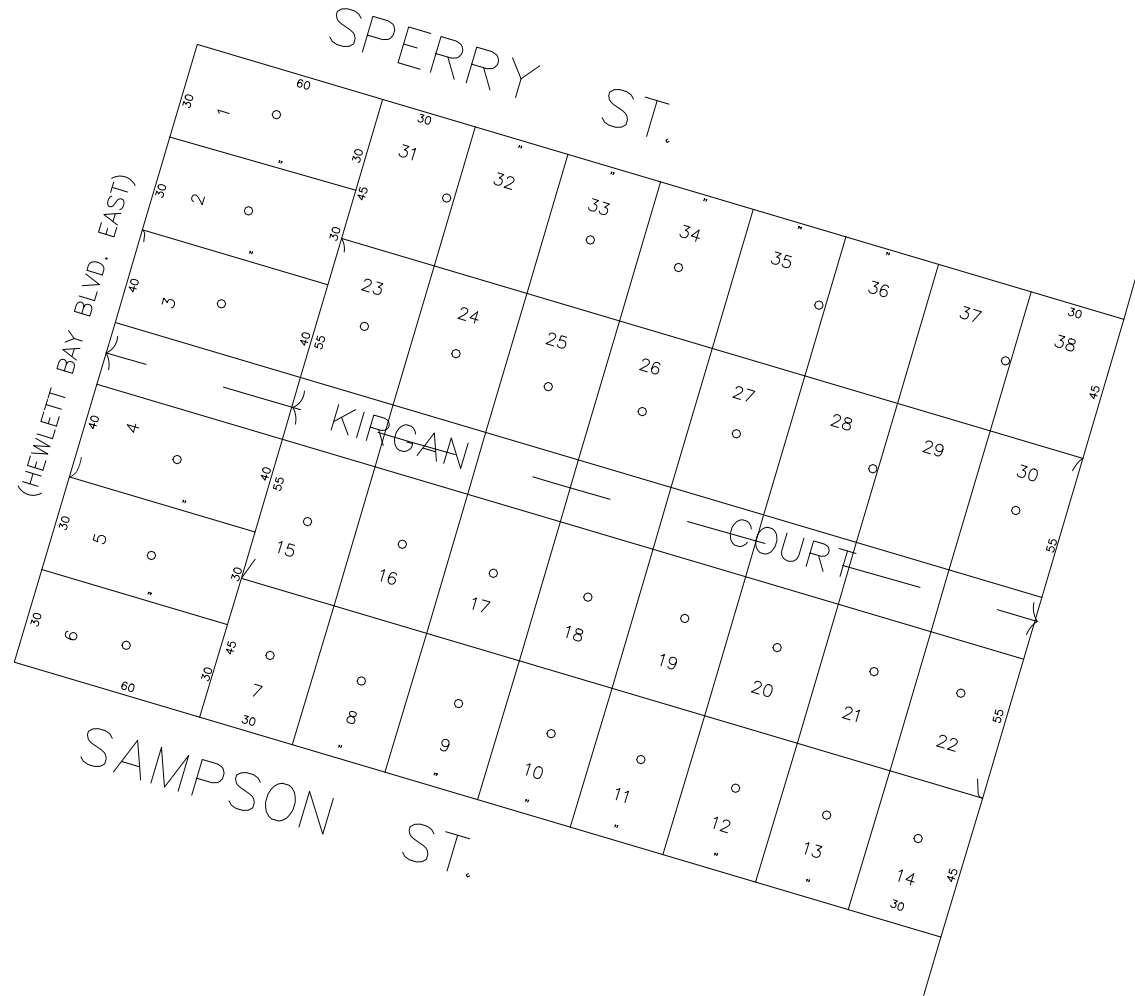
E 2,091,750



EAST



EAST



BL

COPYRIGHT 1988 NASSAU COUNTY

LEGEND	
COUNTY LINE	---
TOWN LINE	----
VILLAGE LINE	-----
SCHOOL DISTRICT LINE	-----
PROPERTY LINE	-----
SPECIAL DISTRICT LINE	-----
BLOCK LIMIT	-----
LOCATOR POINT	*
TAX MAP PARCEL NO.	246
CALCULATED ACREAGE	754(C)
DEED ACREAGE	174
SCALED DIMENSION	327(S)
DEED DIMENSION	185.89
REFERENCE MAPS	
MAP NO.	

POLICE		DIST
County Police		3
WATER		
LIGHTING		
Town of Hempstead		47
LIBRARY		
Bay Park		42
Bay Park		56

FIRE PROTECTION		DIST
SANITARY		
REFUSE & GARBAGE		
Town of Hempstead		L
REFUSE DISPOSAL		
Town of Hempstead		X
SEWAGE COLLECTION		
Sewage Collection District #2-ELM		J

SPECIAL DISTRICTS		
	DIST	
PUBLIC PARKING		
SEWER		
Nassau County Sewage Disposal District #2		202
PARK		
Town of Hempstead		V
IMPROVEMENT		
SIDEWALK		

DRAINAGE		DIST
FIRE HYDRANT RENTAL		
GARBAGE		
ESCALATOR		
WATER POLLUTION CONTROL		
Town, County, College, Police HQ		1
Town Building Dept, Zoning & Appeals, Unincorporated Area		2

MUNICIPALITIES	
TOWN OF: HEMPSTEAD	
NORTH HEMPSTEAD	
OYSTER BAY	
CITY OF: GLEN COVE	
LONG BEACH	
VILLAGE OF:	
SCHOOL DISTRICT	
East Rockaway	19



**Nassau County**  
**Department of Assessment**  
 James E. Davis, Acting Assessor  
**Land & Tax Map**

Map Last Revised: July 21 2017

**SEC. 42**  
**BLK. 37**

SHEET 1 OF 1

CODE	SPECIAL	DISTRICT	WITHIN	CODE	SPECIAL	DISTRICT	WITHIN	CODE	SPECIAL	DISTRICT	WITHIN
294	1	2	202	3	42	47	89	J	L	V	X