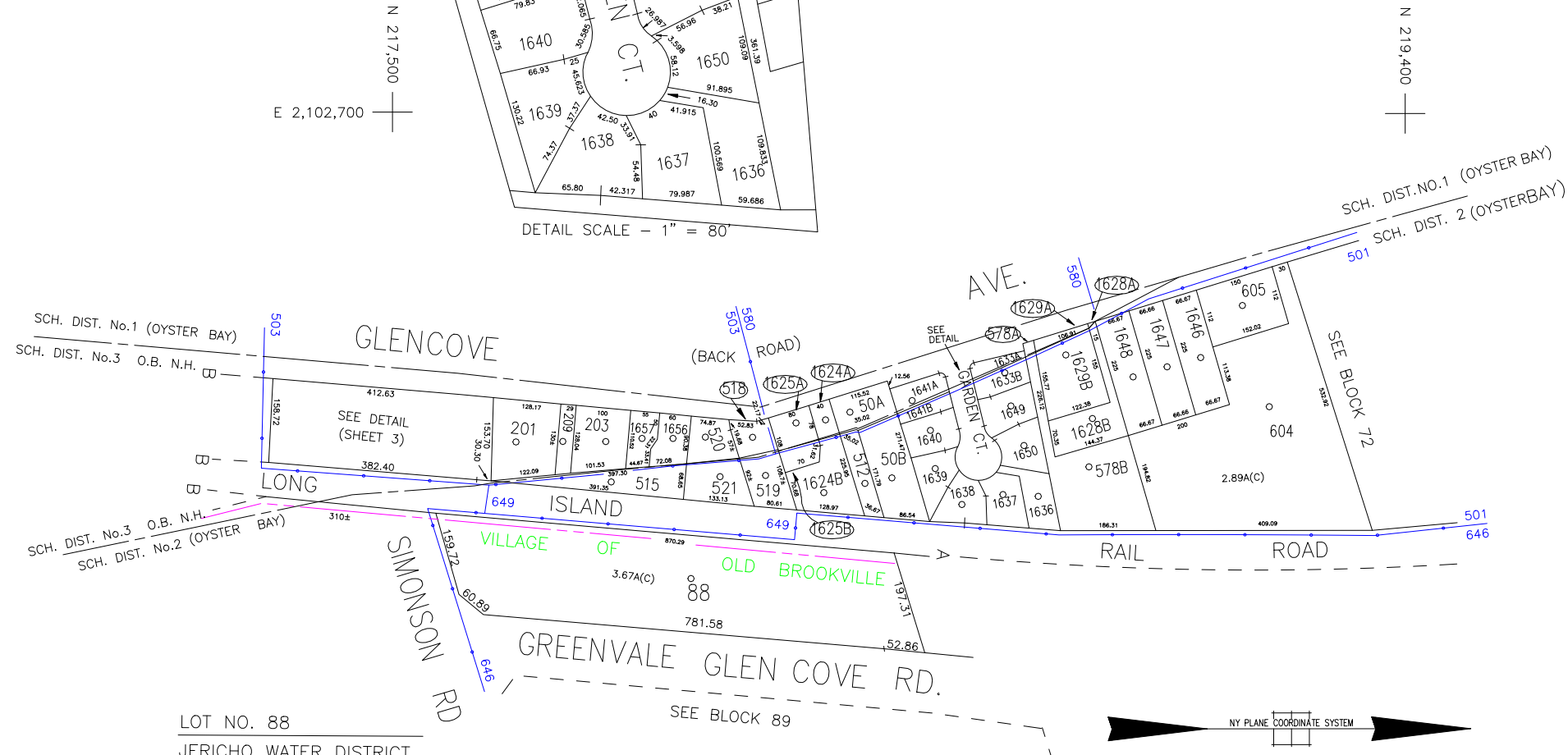
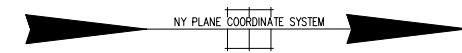


DETAIL SCALE - 1" = 80'



LOT NO. 88
JERICHO WATER DISTRICT
LOT NO. 604
COUNTY of NASSAU

E 2,104,200



LEGEND

COUNTY LINE	---
TOWN LINE	- - - -
VILLAGE LINE	— · — · — ·
SCHOOL DISTRICT LINE	— · — · — ·
PROPERTY LINE	— · — · — ·
SPECIAL DISTRICT LINE	— · — · — ·
BLOCK LIMIT	— · — · — ·
LOCATOR POINT	*
TAX MAP PARCEL NO.	246
CALCULATED ACREAGE	734(C)
DEED ACREAGE	1764
SCALED DIMENSION	327(S)
DEED DIMENSION	185.69

REFERENCE MAPS
MAP NO. 8022

POLICE

DIST	3
County Police	
Jericho	
Glenwood-Glen Head	
Town of Oyster Bay	
LIBRARY	
Gold Coast Library District	
FIRE	

FIRE PROTECTION

DIST	41
Glenwood - Glen Head	
SANITARY	
REFUSE & GARBAGE	
REFUSE DISPOSAL	
SEWAGE COLLECTION	

SPECIAL DISTRICTS

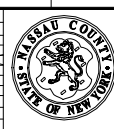
DIST	A
Town of Oyster Bay - Unincorporated Area	
SEWER	
PARK	
Glenwood - Glen Head	
IMPROVEMENT	
SIDEWALK	

DRAINAGE

DIST	D
Unincorporated Area of District #1	
FIRE HYDRANT RENTAL	
GARBAGE	
Glenwood - Glen Head	
ESCALATOR	
WATER POLLUTION CONTROL	
Town, County, College, Police HQ	
Town Highway	

MUNICIPALITIES

DIST	80
TOWN OF: HEMPSTEAD	
NORTH HEMPSTEAD	
OYSTER BAY	
CITY OF: GLEN COVE	
LONG BEACH	
VILLAGE OF: Incorporated Village of Old Brookville	
Incorporated Village of Roslyn Harbor	
SCHOOL DISTRICT	
Glen Head/North Shore CBD #1	
Roslyn	



Nassau County
Department of Assessment
David F. Moog, IAO Assessor
Land & Tax Map
Map Last Revised: August 23 2018

SEC. 20
BLK. G

SHEET 2 OF 3

CODE	SPECIAL	DISTRICT	WITHIN	CODE	SPECIAL	DISTRICT	WITHIN	CODE	SPECIAL	DISTRICT	WITHIN
801	1	2	23	3	41	80	89	7	78	A	D
803	1	10	2	23	3	41	80	A	D		
880	1	2	23	3	41	80	7	A	D		
848	1	10	79								
848	1	10	2	23	3	41	80	65	78	A	D