

100' 50' 0' 100' 200'

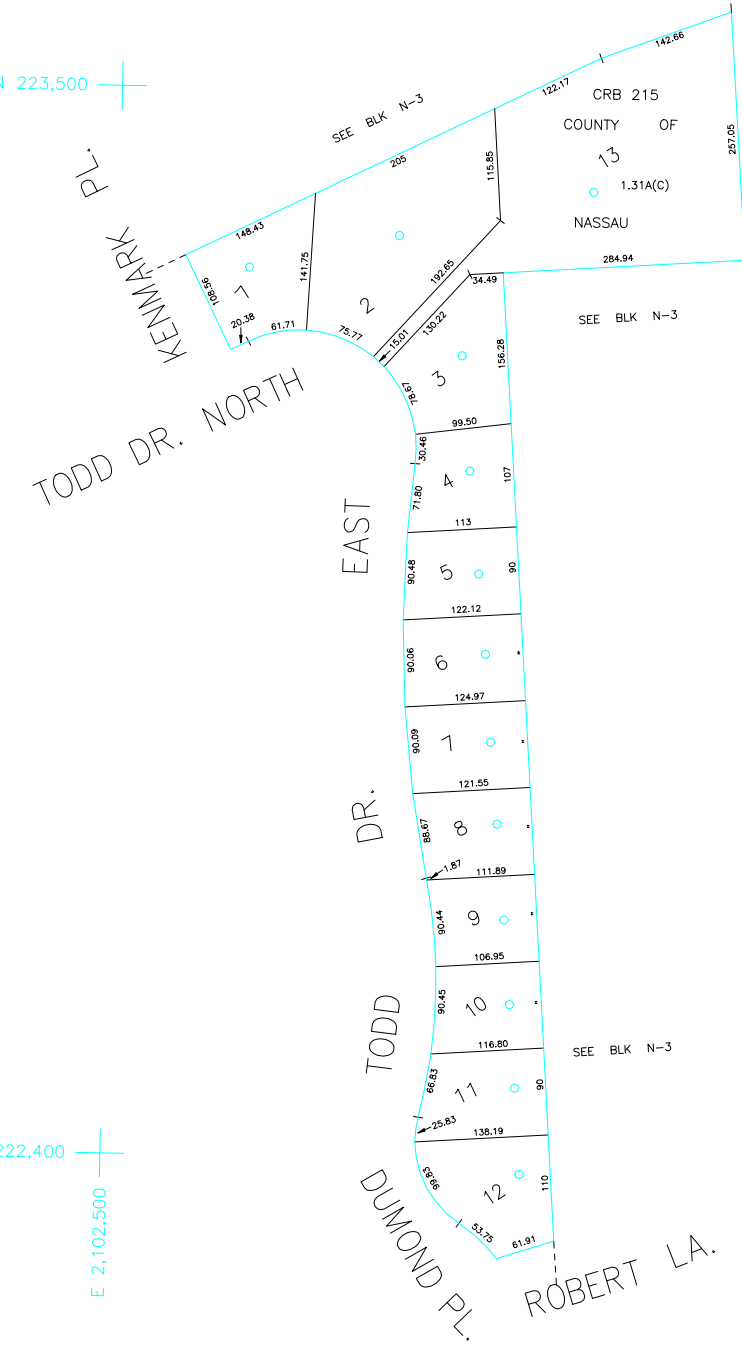
SCALE: 1" = 100'

N 223,500

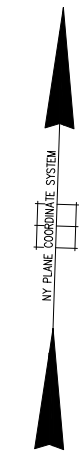
N 222,400

E 2,102,500

E 2,103,200



CRB 215
COUNTY OF
13
1.31A(C)
NASSAU
264.94



COPYRIGHT 1988 NASSAU COUNTY

LEGEND	
COUNTY LINE	---
TOWN LINE	- - - -
VILLAGE LINE	- · - · -
SCHOOL DISTRICT LINE	- · - · -
PROPERTY LINE	---
SPECIAL DISTRICT LINE	---
BLOCK LIMIT	---
LOCATOR POINT	*
TAX MAP PARCEL NO.	246
CALCULATED ACREAGE	734(C)
DEED ACREAGE	174
SCALED DIMENSION	327(S)
DEED DIMENSION	185.89
REFERENCE MAPS	
MAP NO.	

	DIST
POLICE	
County Police	3
WATER	
Glenwood-Glen Head	7
LIGHTING	
Town of Oyster Bay	23
LIBRARY	
Gold Coast Library District	79
FIRE	

	DIST
FIRE PROTECTION	
Glenwood - Glen Head	41
SANITARY	
REFUSE & GARBAGE	
REFUSE DISPOSAL	
SEWAGE COLLECTION	

SPECIAL DISTRICTS	
	DIST
PUBLIC PARKING	
Town of Oyster Bay - Unincorporated Area	A
SEWER	
PARK	
Glenwood - Glen Head	83
IMPROVEMENT	
SIDEWALK	

	DIST
DRAINAGE	
Unincorporated Area of District #1	D
FIRE HYDRANT RENTAL	
GARBAGE	
Glenwood - Glen Head	80
ESCALATOR	
WATER POLLUTION CONTROL	
Town, County, College, Police HQ	1
Town Highway	2

MUNICIPALITIES	
TOWN OF:	DIST
HEMPSTEAD	
NORTH HEMPSTEAD	
OYSTER BAY	
CITY OF:	
GLEN COVE	
LONG BEACH	
VILLAGE OF:	
SCHOOL DISTRICT	
Glenwood Landing/North Shore CSD #1	1



Nassau County
Department of Assessment
David F. Moog, IAO Assessor
Land & Tax Map

Map Last Revised: January 17 2020

SEC. 21
BLK. 232

SHEET 1 OF 1

CODE	SPECIAL	DISTRICT	WITHIN	CODE	SPECIAL	DISTRICT	WITHIN	CODE	SPECIAL	DISTRICT	WITHIN
801	1	2	23	3	41	80	83	7	79	A	D