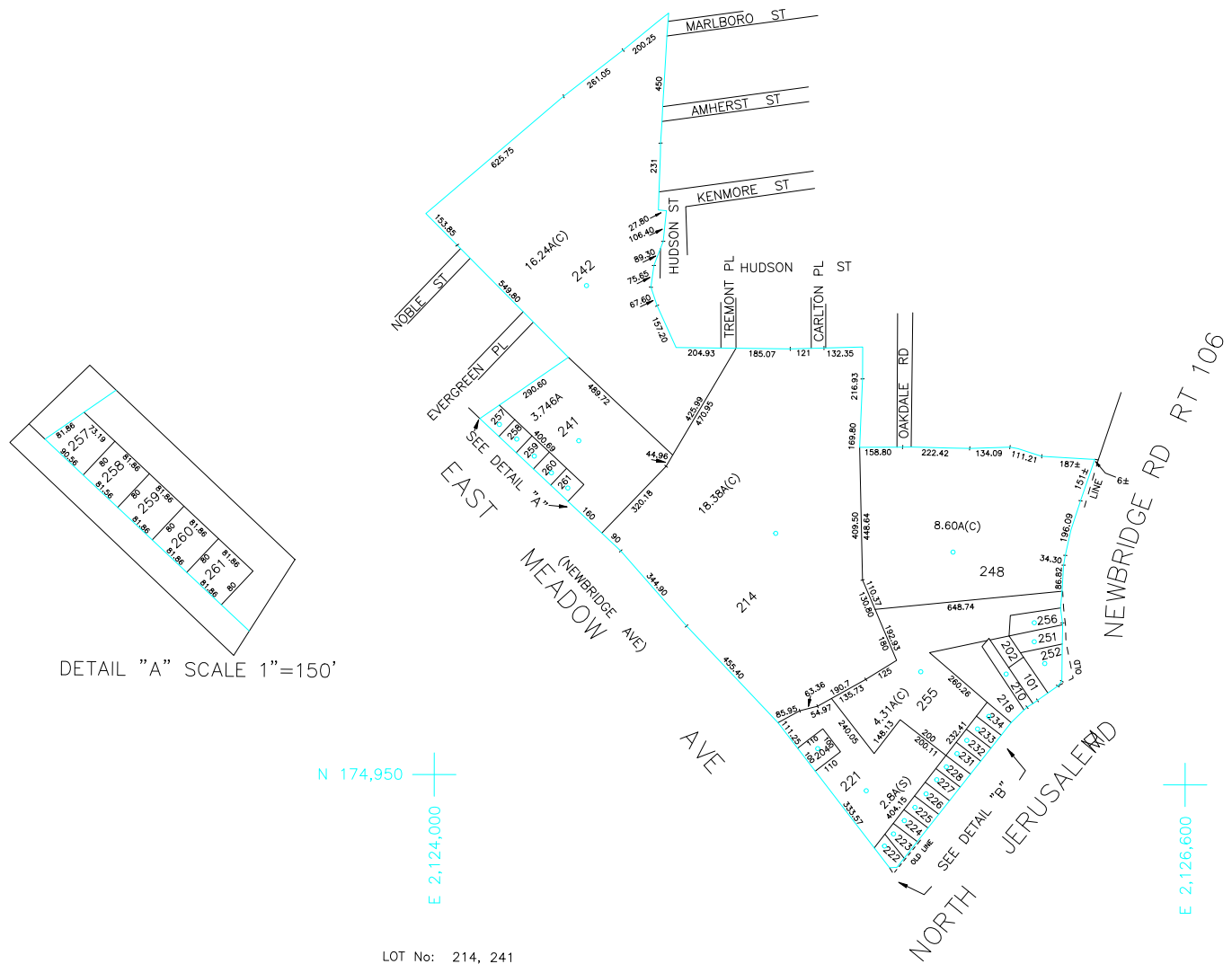


N 177,750

N 177,750



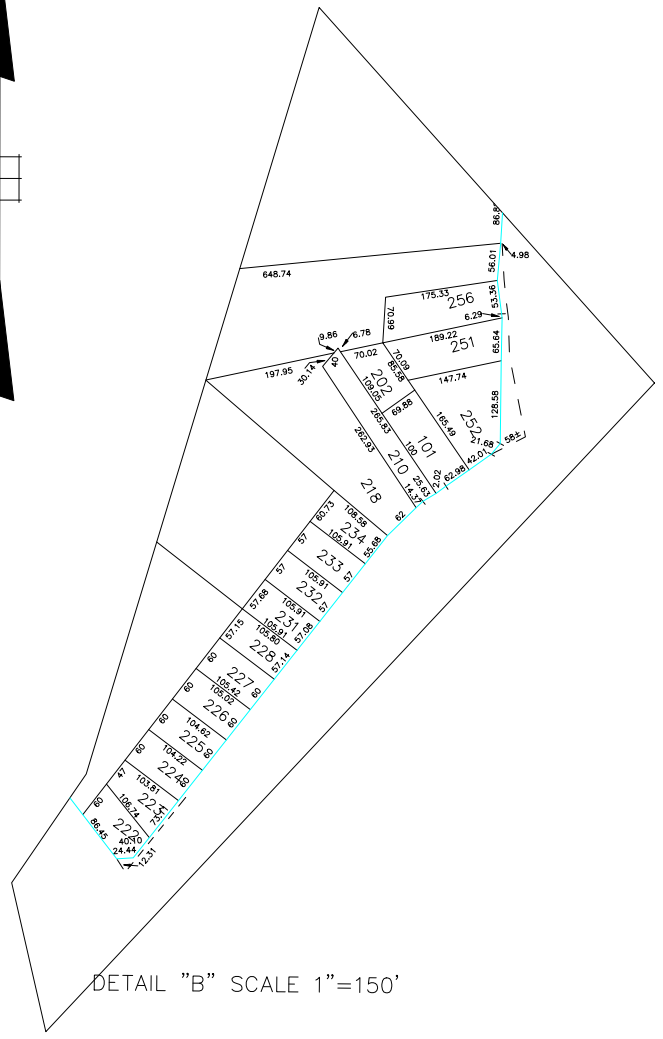
DETAIL "A" SCALE 1"=150'

N 174,950

E 2,124,000

N 174,950

E 2,126,600



DETAIL "B" SCALE 1"=150'

LOT No: 214, 241  
TOWN of HEMPSTEAD

LOT No: 242  
COUNTY of NASSAU

LOT No: 248  
ST. RAPHAEL'S R.C. CHURCH

LEGEND	
COUNTY LINE	---
TOWN LINE	- - - -
VILLAGE LINE	— · — · — ·
SCHOOL DISTRICT LINE	— · — · — ·
PROPERTY LINE	— · — · — ·
SPECIAL DISTRICT LINE	— · — · — ·
BLOCK LIMIT	— · — · — ·
LOCATOR POINT	*
TAX MAP PARCEL NO.	246
CALCULATED ACREAGE	754(C)
DEED ACREAGE	174
SCALED DIMENSION	327(B)
DEED DIMENSION	185.09
REFERENCE MAPS	
MAP NO.	

POLICE	
County Police	
East Meadow	
LIGHTING	
Town of Hempstead	
LIBRARY	
North Baltimore	

FIRE PROTECTION	
SANITARY	
REFUSE & GARBAGE	
Town of Hempstead	L
REFUSE DISPOSAL	
Town of Hempstead	X
SEWAGE COLLECTION	
Sewage Collection District #3-EM	24

SPECIAL DISTRICTS	
PUBLIC PARKING	
SEWER	
Nassau County Sewage Disposal District #3	30
PARK	
Town of Hempstead	V
IMPROVEMENT	
SIDEWALK	

DRAINAGE	
FIRE HYDRANT RENTAL	
GARBAGE	
ESCALATOR	
WATER POLLUTION CONTROL	
Town, County, College, Police HQ	1
Town Building Dept, Zoning & Appeal, Unincorporated Area	2

MUNICIPALITIES	
TOWN OF: HEMPSTEAD	
NORTH HEMPSTEAD	
OYSTER BAY	
CITY OF: GLEN COVE	
LONG BEACH	
VILLAGE OF:	
SCHOOL DISTRICT	
East Meadow	3



**Nassau County**  
**Department of Assessment**  
David F. Moog, IAO Assessor  
**Land & Tax Map**

Map Last Revised: January 26 2021

**SEC. 50**  
**BLK. L**

SHEET 1 OF 1

CODE	SPECIAL	DISTRICT	WITHIN	CODE	SPECIAL	DISTRICT	WITHIN	CODE	SPECIAL	DISTRICT	WITHIN
308	1	2	24	3	30	47	71	9	L	V	X