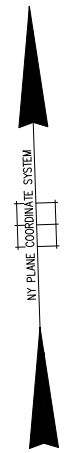
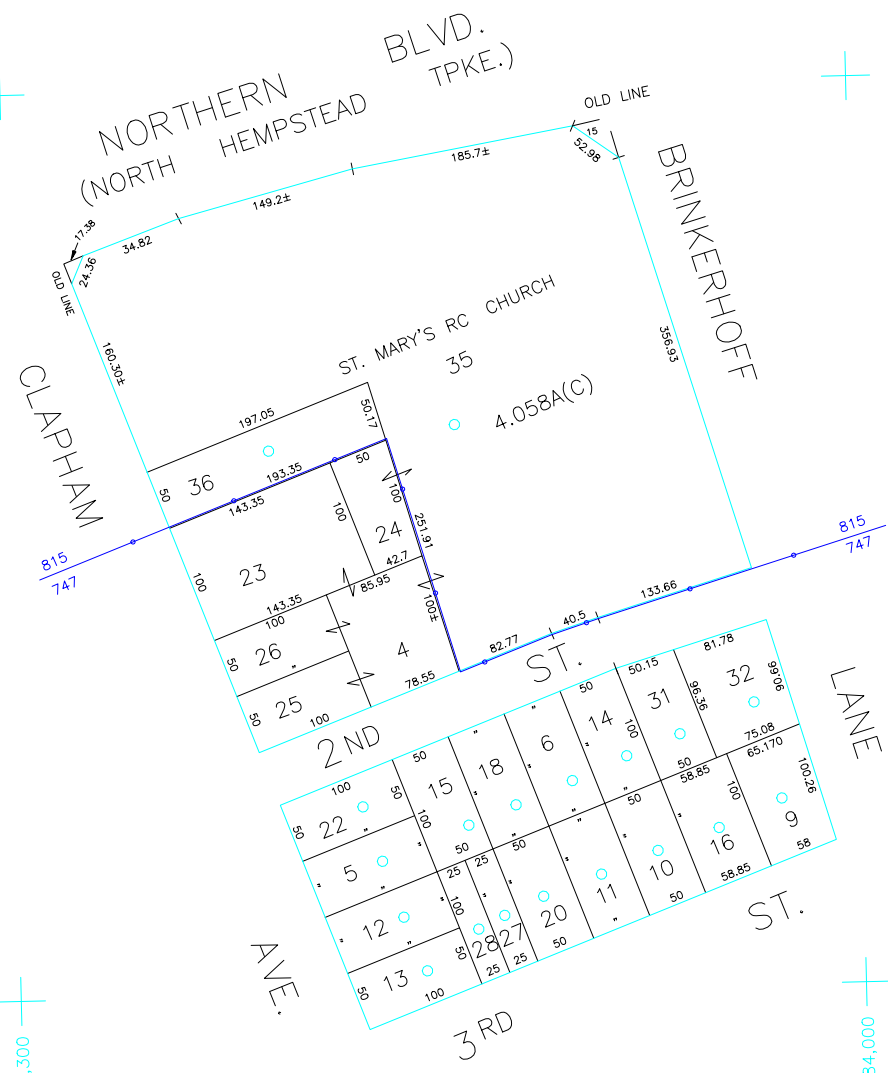


N 206,800

N 206,050

E 2,083,300

E 2,084,000



COPYRIGHT 1982 NASSAU COUNTY

LEGEND	
COUNTY LINE	---
TOWN LINE	- - - -
VILLAGE LINE	- · - · - ·
SCHOOL DISTRICT LINE	- · - · - ·
PROPERTY LINE	---
SPECIAL DISTRICT LINE	- · - · - ·
BLOCK LIMIT	---
LOCATOR POINT	*
TAX MAP PARCEL NO.	246
CALCULATED ACREAGE	734(C)
DEED ACREAGE	174
SCALED DIMENSION	327(S)
DEED DIMENSION	185.89
REFERENCE MAPS	
MAP NO.	

POLICE		DIST
County Police		3
Manhasset-Lakeville		10
Town of North Hempstead		30
Manhasset-Lakeville		40

SPECIAL DISTRICTS		DIST
FIRE PROTECTION		
SANITARY		
REFUSE & GARBAGE		
REFUSE DISPOSAL		
SEWAGE COLLECTION		

SPECIAL DISTRICTS		DIST
PUBLIC PARKING		
SEWER		
PARK		
IMPROVEMENT		
SIDEWALK	Town of North Hempstead	8

MUNICIPALITIES		DIST
DRAINAGE		
FIRE HYDRANT RENTAL		
GARBAGE		
ESCALATOR	Manhasset	63
WATER POLLUTION CONTROL		
Town, County, College, Police HQ		1
Town Highway		2

MUNICIPALITIES		DIST
TOWN OF:		
HEMPSTEAD		
NORTH HEMPSTEAD		
OYSTER BAY		
CITY OF:		
GLEN COVE		
LONG BEACH		
VILLAGE OF:		
SCHOOL DISTRICT		
Manhasset		8



Nassau County
Department of Assessment
Land & Tax Map

Map Last Revised: March 18 2021

SEC. 3
BLK. 131

SHEET 1 OF 1

CODE	SPECIAL	DISTRICT	WITHIN	CODE	SPECIAL	DISTRICT	WITHIN	CODE	SPECIAL	DISTRICT	WITHIN
747	1	10	2	3	30	40	88	89	8		