

N 189,000

BROADWAY

SCHOOL

(POWELL AVE.)

ST.

STATE OF NEW YORK  
 LOT NOS: 260,632,634,636,  
 642,670,671,674,  
 682 & 683.

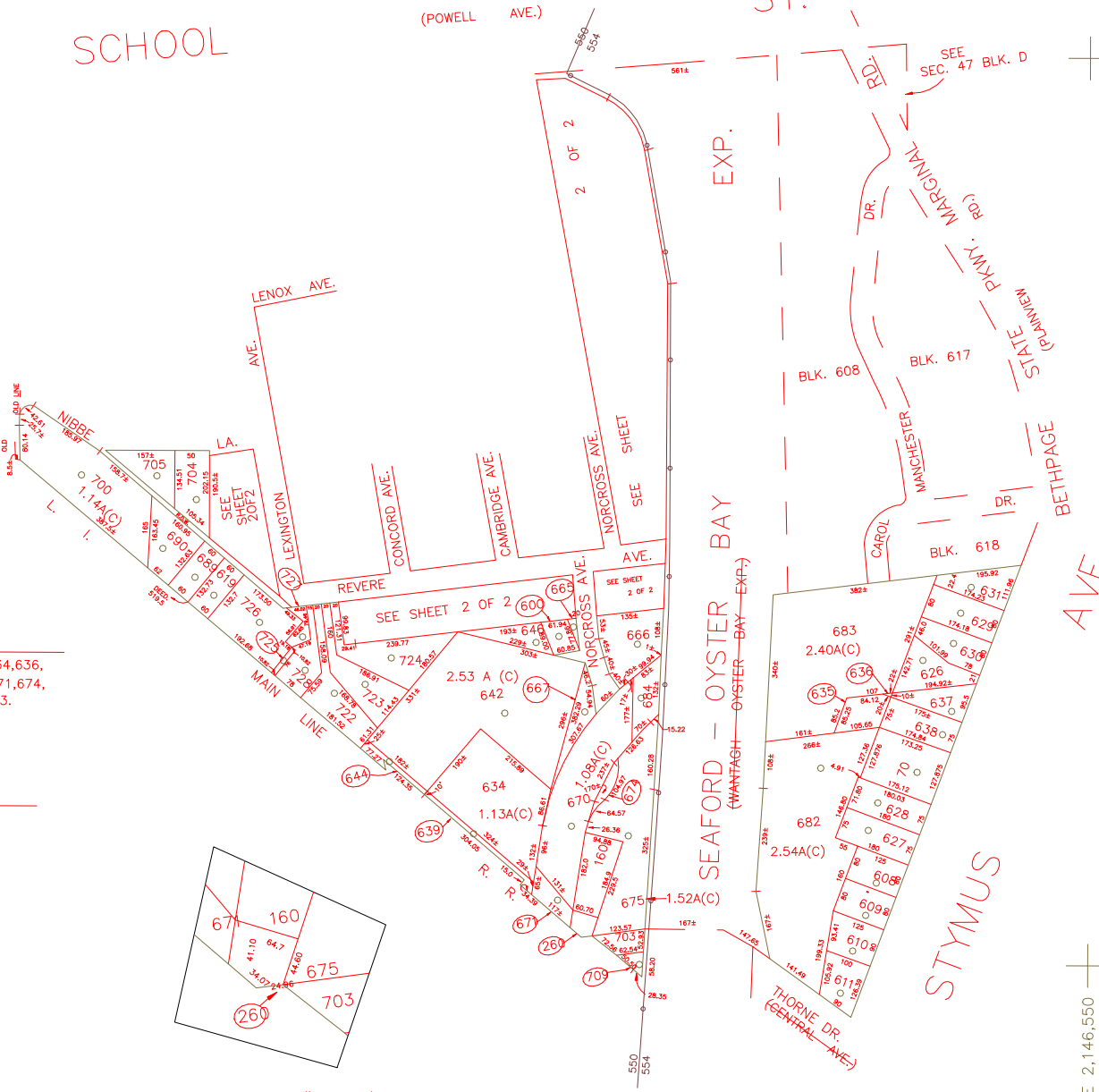
CEMENTERY.  
 LOT NO: 600

COUNTY OF NASSAU  
 LOT NO: 684

N 186,900

E 2,143,950

DETAIL SCALE 1" = 80'



E 2,146,550

**LEGEND**

COUNTY LINE	---
TOWN LINE	---
VILLAGE LINE	---
SCHOOL DISTRICT LINE	---
PROPERTY LINE	---
SPECIAL DISTRICT LINE	---
BLOCK LIMIT	---
LOCATOR POINT	*
TAX MAP PARCEL NO.	246
CALCULATED ACREAGE	754(C)
DEED ACREAGE	174
SCALED DIMENSION	327(S)
DEED DIMENSION	185.89
REFERENCE MAPS	
MAP NO.	

DIST	POLICE
3	County Police
6	Bethpage Ext. (CK)
23	Town of Oyster Bay
31	Bethpage

DIST	FIRE PROTECTION
	SANITARY
	REFUSE & GARBAGE
	REFUSE DISPOSAL
21	SEWAGE COLLECTION
28	Sewage Collection District #3-F
65	Sewage Collection District #3-P
	Town of Oyster Bay

DIST	PUBLIC PARKING
A	Town of Oyster Bay - Unincorporated Area
30	Nassau County Sewage Disposal District #3
62	PARK
	Bethpage
	IMPROVEMENT
	SIDEWALK

DIST	DRAINAGE
D	Unincorporated Area of District #1
	FIRE HYDRANT RENTAL
63	GARBAGE
	Garbage District #1
	ESCALATOR
	WATER POLLUTION CONTROL
1	Town, County, College, Police HQ
2	Town Highway

DIST	MUNICIPALITIES
	TOWN OF: HEMPSTEAD, NORTH HEMPSTEAD, OYSTER BAY, CITY OF: GLEN COVE, LONG BEACH, VILLAGE OF:
21	SCHOOL DISTRICT
	Bethpage



**Nassau County**  
 Department of Assessment

**Land & Tax Map**

Map Last Revised: February 9 2022

**SEC. 46**  
**BLK. E**

SHEET 1 OF 2

CODE	SPECIAL	DISTRICT	WITHIN	CODE	SPECIAL	DISTRICT	WITHIN	CODE	SPECIAL	DISTRICT	WITHIN		
650	1	2	23	28	3	31	39	65	6	62	63	A	D
654	1	2	21	23	3	31	39	65	6	62	63	A	D