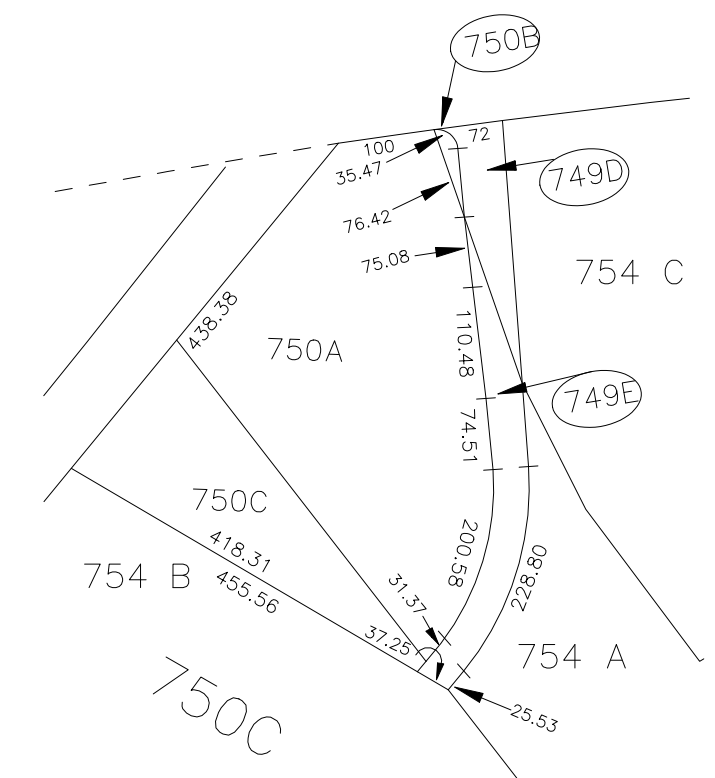


CA289: COUNTRY POINT at PLAINVIEW CONDO I  
 CA290: COUNTRY POINT at PLAINVIEW CONDO II  
 CA296: COUNTRY POINT at PLAINVIEW CONDO VI  
 CA299: COUNTRY POINT at PLAINVIEW CONDO V  
 CA302: COUNTRY POINT at PLAINVIEW CONDO IV  
 CA303: COUNTRY POINT at PLAINVIEW CONDO III



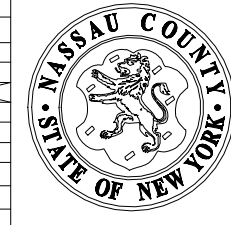
DETAIL SCALE 1" = 200'

LEGEND										SPECIAL DISTRICTS										MUNICIPALITIES																													
COUNTY LINE	---									POLICE	DIST									DRAINAGE	DIST									TOWN OF:	HEMPSTEAD																		
TOWN LINE	---									County Police	3									Unincorporated Area of District #1	D									NORTH HEMPSTEAD																			
VILLAGE LINE	---									Water	15									FIRE HYDRANT RENTAL										OYSTER BAY																			
SCHOOL DISTRICT LINE	---									Plainview	RD									GARBAGE	93									CITY OF:	GLEN COVE																		
PROPERTY LINE	---									LIGHTING	23									ESCALATOR										LONG BEACH																			
SPECIAL DISTRICT LINE	---									Library										WATER POLLUTION CONTROL										VILLAGE OF:																			
BLOCK LIMIT	---									FIRE	55									Town, County, College, Police HQ	1									SCHOOL DISTRICT	19SD																		
LOCATOR POINT	•									SEWAGE COLLECTION	26									Town Highway	2									Old Bethpage/Plainview-Old Bethpage CSD	CSD																		
TAX MAP PARCEL NO.	246									IMPROVEMENT																																							
CALCULATED ACREAGE	754(C)									SIDEWALK																																							
DEED ACREAGE	1764																																																
SCALED DIMENSION	327(S)																																																
DEED DIMENSION	185.69																																																
REFERENCE MAPS																																																	
MAP NO. 7689, 7741, 8080, 8081, H-1638																																																	

Nassau County Department of Assessment

Land & Tax Map

Map Last Revised July 28 2022



SEC. 47  
BLK. E

SHEET 1 OF 1