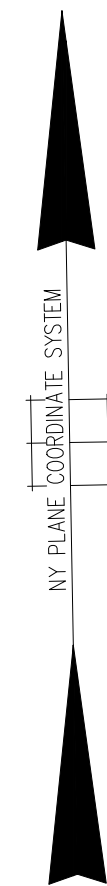
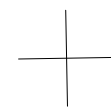


60' 30' 0' 60' 120'



SCALE: 1" = 60'

N 197,250

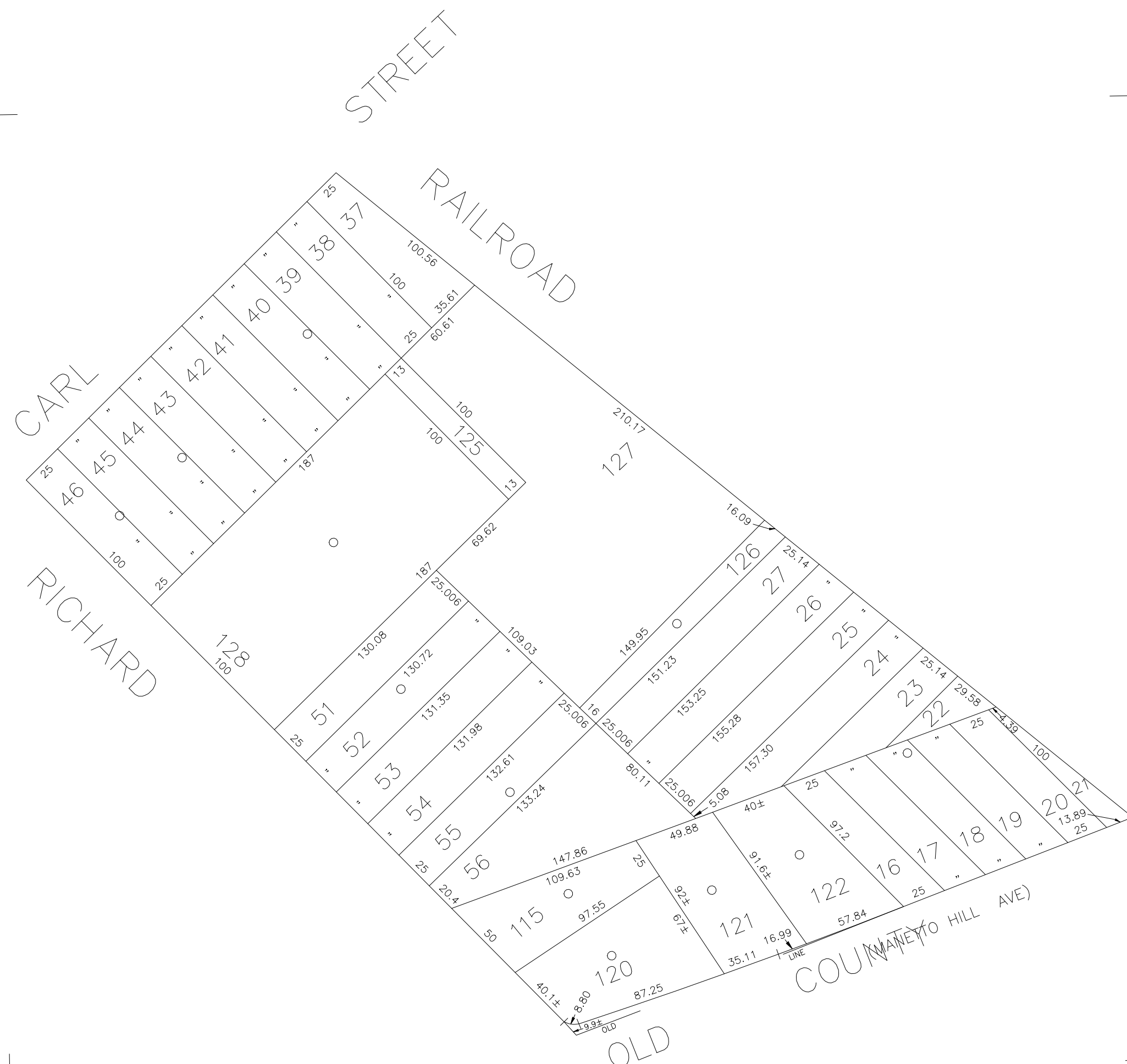


N 196,700

E 2,132,950



E 2,133,600



COPYRIGHT 1988 NASSAU COUNTY

LEGEND

COUNTY LINE	---
TOWN LINE	---
VILLAGE LINE	---
SCHOOL DISTRICT LINE	---
PROPERTY LINE	---
SPECIAL DISTRICT LINE	---
BLOCK LIMIT	---
LOCATOR POINT	•
TAX MAP PARCEL NO.	246
CALCULATED ACREAGE	754(C)
DEED ACREAGE	1764
SCALED DIMENSION	327(S)
DEED DIMENSION	185.69
REFERENCE MAPS	
MAP NO. H-1678	

POLICE	DIST
County Police	3
WATER	
Hicksville	9
LIGHTING	
Town of Oyster Bay	23
LIBRARY	
FIRE	
Hicksville	33

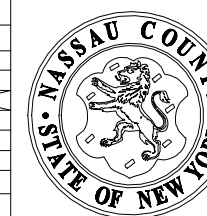
FIRE PROTECTION	DIST
SANITARY	
REFUSE & GARBAGE	
REFUSE DISPOSAL	
SEWAGE COLLECTION	
Sewage Collection District #3-H	18
Town of Oyster Bay	55

SPECIAL DISTRICTS

PUBLIC PARKING	DIST
Town of Oyster Bay - Unincorporated Area	A
SEWER	
Nassau County Sewage Disposal District #3	39
PARK	
Hicksville	57
IMPROVEMENT	
SIDEWALK	

DRAINAGE	DIST
Unincorporated Area of District #1	D
FIRE HYDRANT RENTAL	
GARBAGE	
Garbage District #1	93
ESCALATOR	
WATER POLLUTION CONTROL	
Town, County, College, Police HQ	1
Town Highway	2

MUNICIPALITIES	
TOWN OF: HEMPSTEAD	
NORTH HEMPSTEAD	
OYSTER BAY	
CITY OF: GLEN COVE	
LONG BEACH	
VILLAGE OF:	
SCHOOL DISTRICT	
Hicksville	17



Nassau County
Department of Assessment
Land & Tax Map

Map Last Revised June 23 2023

SEC. 12
BLK. 94-1 SHEET 1 OF 1

CODE	SPECIAL	DISTRICT	WITHIN	CODE	SPECIAL	DISTRICT	WITHIN	CODE	SPECIAL	DISTRICT	WITHIN		
611	1	18	2	23	3	33	39	55	57	9	93	A	D