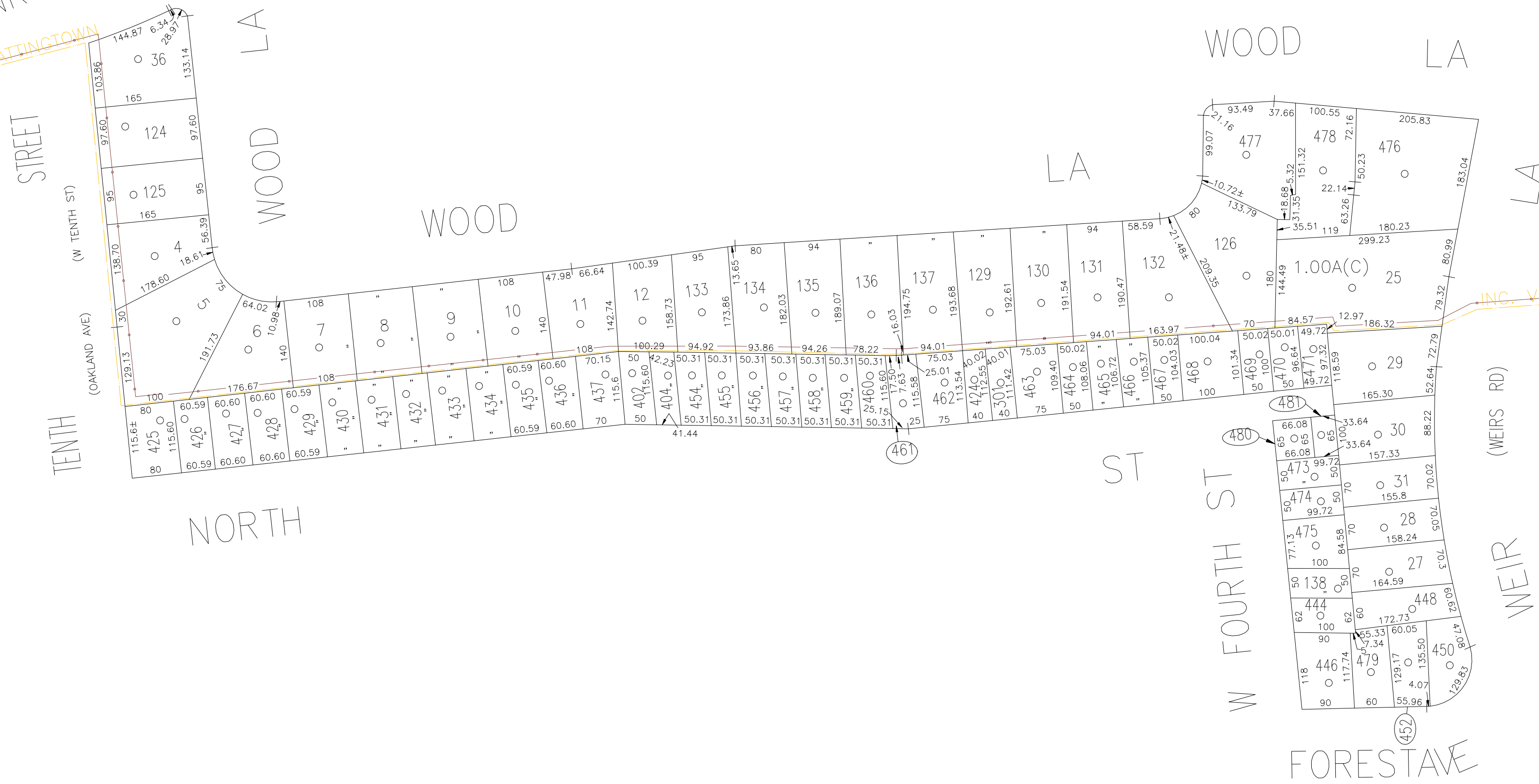




N 238,200

614 INC. VILL. OF LATTINGTOWN
515

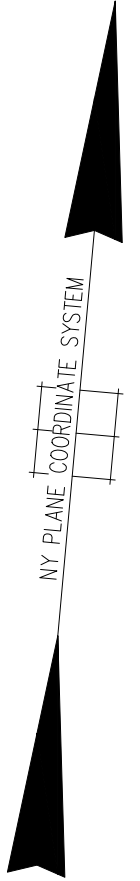


614 INC. VILL. OF LATTINGTOWN
515

N 236,900

E 2,107,800

E 2,110,500



LEGEND

COUNTY LINE	---
TOWN LINE	- - - -
VILLAGE LINE	· · · ·
SCHOOL DISTRICT LINE	· · · ·
PROPERTY LINE	—
SPECIAL DISTRICT LINE	· · · ·
BLOCK LIMIT	· · · ·
LOCATOR POINT	•
TAX MAP PARCEL NO.	246
CALCULATED ACREAGE	75M(C)
DEED ACREAGE	1764
SCALED DIMENSION	327(S)
DEED DIMENSION	185.69

POLICE	DIST
County Police	3
WATER	
Locust Valley	12
LIGHTING	
Town of Oyster Bay	23
LIBRARY	
FIRE	
Locust Valley	35

FIRE PROTECTION	DIST
SANITARY	
REFUSE & GARBAGE	
REFUSE DISPOSAL	
SEWAGE COLLECTION	
Town of Oyster Bay	55

SPECIAL DISTRICTS

PUBLIC PARKING	DIST
Town of Oyster Bay - Unincorporated Area	A
SEWER	
PARK	
Locust Valley	68
IMPROVEMENT	
SIDEWALK	

DRAINAGE	DIST
Unincorporated Area of District #1	D
FIRE HYDRANT RENTAL	
Locust Valley	47
GARBAGE	
Garbage District #2	53
ESCALATOR	
WATER POLLUTION CONTROL	
Town, County, College, Police HQ	1
Town Highway	2

MUNICIPALITIES	
TOWN OF: HEMPSTEAD	
NORTH HEMPSTEAD	
OYSTER BAY	
CITY OF: GLEN COVE	
LONG BEACH	
VILLAGE OF: LATTINGTOWN	
Incorporated Village of Lattingtown	
SCHOOL DISTRICT	
Locust Valley/Locust Valley CSD # 3	



Nassau County
Department of Assessment

Land & Tax Map

Map Last Revised February 05 2024

SEC. 30
BLK. 66

SHEET 1 OF 1

CODE	SPECIAL	DISTRICT	WITHIN	CODE	SPECIAL	DISTRICT	WITHIN	CODE	SPECIAL	DISTRICT	WITHIN	
515	1	12	2	23	3	35	47	53	55	68	A	D
614	1	12	3	35	47							