

60' 30' 0' 60' 120'



SCALE: 1" = 60'

N 174,100

N 174,000

N 173,900

N 173,800

N 173,750

N 173,650

PARKWAY

CROSSISLAND

QUEENS CO LINE
NASSAU CO
QUEENS CO
NASSAU CO

HATHAWAY

LUDLAM

HATHAWAY

LUDLAM

HATHAWAY

LUDLAM

AVE

AVE

AVE.

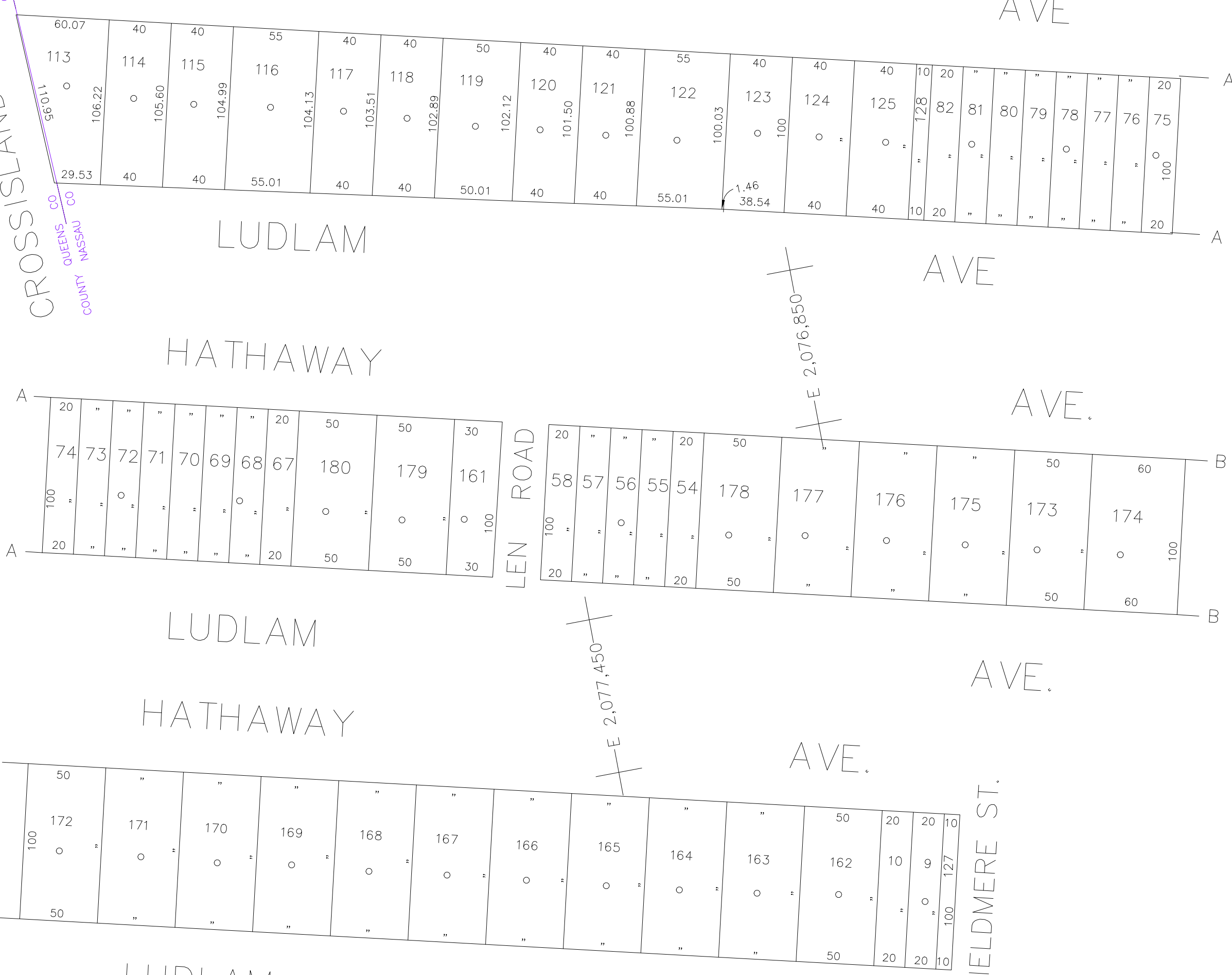
AVE.

AVE.

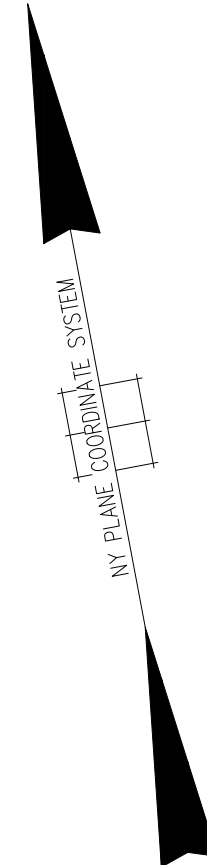
AVE.

LEN ROAD

FIELDMERE ST.



COPYRIGHT 1988 NASSAU COUNTY



LEGEND

COUNTY LINE	---
TOWN LINE	----
VILLAGE LINE	-----
SCHOOL DISTRICT LINE	-.-.-.-
PROPERTY LINE	_____
SPECIAL DISTRICT LINE	_____
BLOCK LIMIT
LOCATOR POINT	•
TAX MAP PARCEL NO.	246
CALCULATED ACREAGE	75M(C)
DEED ACREAGE	176
SCALED DIMENSION	327(S)
DEED DIMENSION	185.69
REFERENCE MAPS	
MAP NO. -	

POLICE	DIST
County Police	3
WATER	
LIGHTING	
Town of Hempstead	47
LIBRARY	
FIRE	
Elmont	63

FIRE PROTECTION	DIST
SANITARY	
Sanitary District 6	93
REFUSE & GARBAGE	
REFUSE DISPOSAL	
Town of Hempstead	x
SEWAGE COLLECTION	
Sewage Collection District #2-FP	D

SPECIAL DISTRICTS

PUBLIC PARKING	DIST
SEWER	
Nassau County Sewage Disposal District #2	202
PARK	
Town of Hempstead	v
IMPROVEMENT	
SIDEWALK	

DRAINAGE	DIST
FIRE HYDRANT RENTAL	
GARBAGE	
ESCALATOR	
WATER POLLUTION CONTROL	
Town, County, College, Police HQ	1
Town Building Dept, Zoning & Appeal, Unincorporated Area	

MUNICIPALITIES	DIST
TOWN OF: HEMPSTEAD	
NORTH HEMPSTEAD	
OYSTER BAY	
CITY OF: GLEN COVE	
LONG BEACH	
VILLAGE OF:	
SCHOOL DISTRICT	
Elmont	16



Nassau County Department of Assessment Land & Tax Map

Map Last Revised March 14 2024

SEC. 32 BLK. 407

SHEET 1 OF 1

CODE	SPECIAL	DISTRICT	WITHIN	CODE	SPECIAL	DISTRICT	WITHIN	CODE	SPECIAL	DISTRICT	WITHIN
435	1	2	202	3	47	63	93	D	V	X	