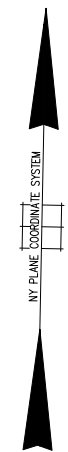
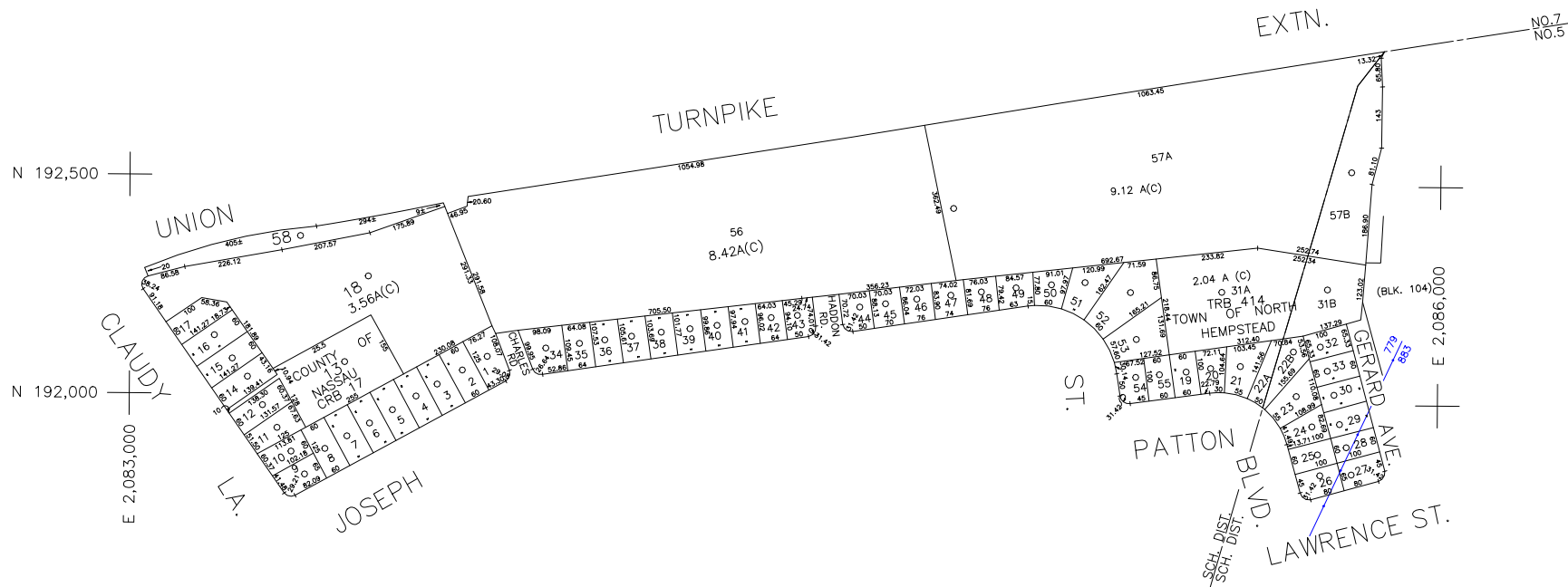


COPYRIGHT 1988 NASSAU COUNTY



LEGEND

COUNTY LINE	---
TOWN LINE	- - - -
VILLAGE LINE	— · — · —
SCHOOL DISTRICT LINE	— · — · —
PROPERTY LINE	— · — · —
SPECIAL DISTRICT LINE	— · — · —
BLOCK LIMIT	— · — · —
LOCATOR POINT	*
TAX MAP PARCEL NO.	246
CALCULATED ACREAGE	734(C)
DEED ACREAGE	174
SCALED DIMENSION	327(S)
DEED DIMENSION	185.89
REFERENCE MAPS	
MAP NO.	

POLICE

County Police	3
Manhasset-Lakonville	10
Town of North Hempstead	30
Manhasset-Lakonville	46
New Hyde Park	47

FIRE PROTECTION

Sanitary	
Refuse & Garbage	
Refuse Disposal	
Sewage Collection	
Sewage Collection District #2-NHP	H

SPECIAL DISTRICTS

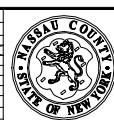
Public Parking	
Sewer	
Nassau County Sewage Disposal District # 2	202
Park	
New Hyde Park	56
Improvement	
Sidewalk	
Town of North Hempstead	8

DRAINAGE

Fire Hydrant Rental	
Garbage	
Escalator	
Water Pollution Control	
Town, County, College, Police HD	1
Town Highway	2

MUNICIPALITIES

Town of: HEMPSTEAD	
NORTH HEMPSTEAD	
OYSTER BAY	
CITY OF: GLEN COVE	
LONG BEACH	
VILLAGE OF: GREENTREE	
SCHOOL DISTRICT	
New Hyde Park - Garden City Park	5
Green Neck	7



Nassau County
Department of Assessment
Charles O'Shea, Chairman
Land & Tax Map

Map Last Revised: April 15 2003

SEC. 8
BLK. 235

SHEET 1 OF 1

CODE	SPECIAL	DISTRICT	WITHIN	CODE	SPECIAL	DISTRICT	WITHIN	CODE	SPECIAL	DISTRICT	WITHIN
779	1	10	2	202	3	30	46	88	88	H	8
885	1	2	202	3	30	47	56	88	88	H	8