

50' 25' 0' 100'



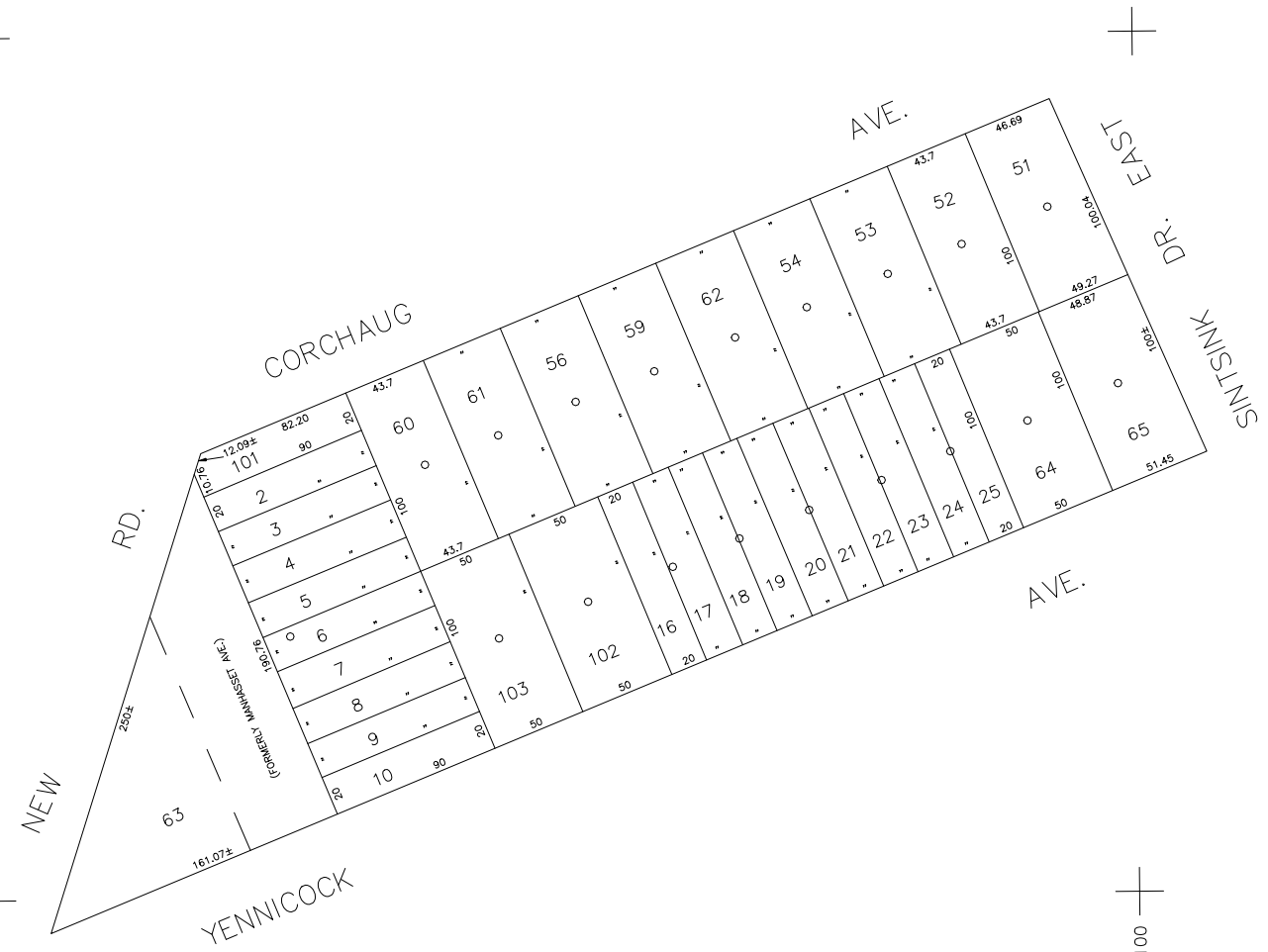
SCALE: 1" = 50'

N 223,350

N 222,900

E 2,080,500

E 2,081,100



COPYRIGHT 1989 NASSAU COUNTY

LEGEND	
COUNTY LINE	---
TOWN LINE	- - - -
VILLAGE LINE	— · — · —
SCHOOL DISTRICT LINE	— · — · —
PROPERTY LINE	— · — · —
SPECIAL DISTRICT LINE	— · — · —
BLOCK LIMIT	— · — · —
LOCATOR POINT	*
TAX MAP PARCEL NO.	246
CALCULATED ACREAGE	754(C)
DEED ACREAGE	174
SCALED DIMENSION	327(S)
DEED DIMENSION	185.89
REFERENCE MAPS	
MAP NO.	

POLICE		DIST
County Police		3
Port Washington		13
LIGHTING		
LIBRARY		
FIRE		

FIRE PROTECTION		DIST
SANITARY		
REFUSE & GARBAGE		
REFUSE DISPOSAL		
SEWAGE COLLECTION		

SPECIAL DISTRICTS		DIST
PUBLIC PARKING	Port Washington	72
SEWER		
PARK		
IMPROVEMENT		
SIDEWALK		

DRAINAGE		DIST
FIRE HYDRANT RENTAL		
GARBAGE		
ESCALATOR		
WATER POLLUTION CONTROL	Town, County, College, Police HQ	1

MUNICIPALITIES		DIST
TOWN OF:	HEMPSTEAD	
	NORTH HEMPSTEAD	
	OYSTER BAY	
CITY OF:	GLEN COVE	
	LONG BEACH	
VILLAGE OF:		
SCHOOL DISTRICT	Port Washington	4



Nassau County
Department of Assessment
Charles O'Shea, Chairman
Land & Tax Map

Map Last Revised: April 10 2003

SEC. 4
BLK. 82

SHEET 1 OF 1

CODE	SPECIAL	DISTRICT	WITHIN	CODE	SPECIAL	DISTRICT	WITHIN	CODE	SPECIAL	DISTRICT	WITHIN
789	1	13	3	72							