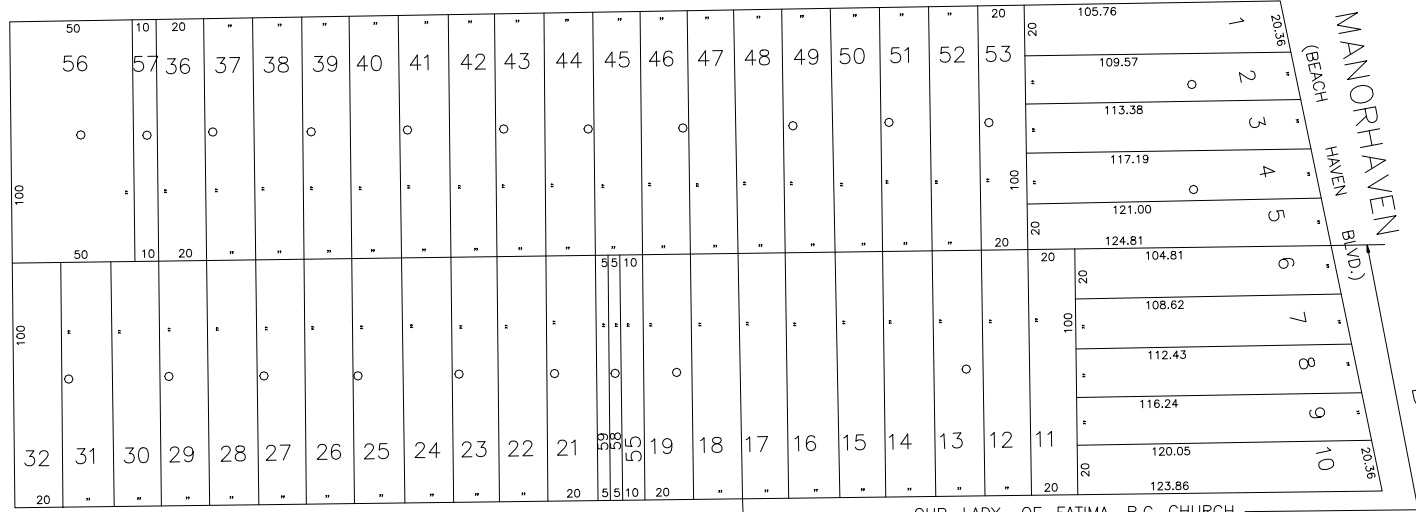




CAMBRIDGE AVE.

N 225,350

BOXWOOD ROAD (ETON RD.)



E 2,080,100

OUR LADY OF FATIMA R.C. CHURCH

COTTONWOOD ROAD (BRIGHTON RD.)

N 224,700  
E 2,079,800

**LEGEND**

COUNTY LINE	---
TOWN LINE	- - - -
VILLAGE LINE	· · · · ·
SCHOOL DISTRICT LINE	— · — · — ·
PROPERTY LINE	— · — · — ·
SPECIAL DISTRICT LINE	— · — · — ·
BLOCK LIMIT	— · — · — ·
LOCATOR POINT	*
TAX MAP PARCEL NO.	246
CALCULATED ACREAGE	754(C)
DEED ACREAGE	176
SCALED DIMENSION	327(S)
DEED DIMENSION	185.69
REFERENCE MAPS	
MAP NO.	

**POLICE**

County Police	DIST 3
Port Washington	DIST 13
LIGHTING	
LIBRARY	
FIRE	

**SPECIAL DISTRICTS**

FIRE PROTECTION	DIST
SANITARY	
REFUSE & GARBAGE	
REFUSE DISPOSAL	
SEWAGE COLLECTION	
SIDEWALK	

**SPECIAL DISTRICTS**

PUBLIC PARKING	DIST 72
SEWER	
PARK	
IMPROVEMENT	
SIDEWALK	

**DRAINAGE**

FIRE HYDRANT RENTAL	
GARBAGE	
ESCALATOR	
WATER POLLUTION CONTROL	
Town, County, College, Police HQ	DIST 1

**MUNICIPALITIES**

TOWN OF: HEMPSTEAD, NORTH HEMPSTEAD, OYSTER BAY, CITY OF: GLEN COVE, LONG BEACH, VILLAGE OF: ...	
SCHOOL DISTRICT: Port Washington	DIST 4



**Nassau County Department of Assessment**  
Charles O'Shea, Chairman  
**Land & Tax Map**  
Map Last Revised: April 10 2003

**SEC. 4 BLK. 72 SHEET 1 OF 1**

CODE	SPECIAL	DISTRICT	WITHIN	CODE	SPECIAL	DISTRICT	WITHIN	CODE	SPECIAL	DISTRICT	WITHIN
789	1	13	3	72							