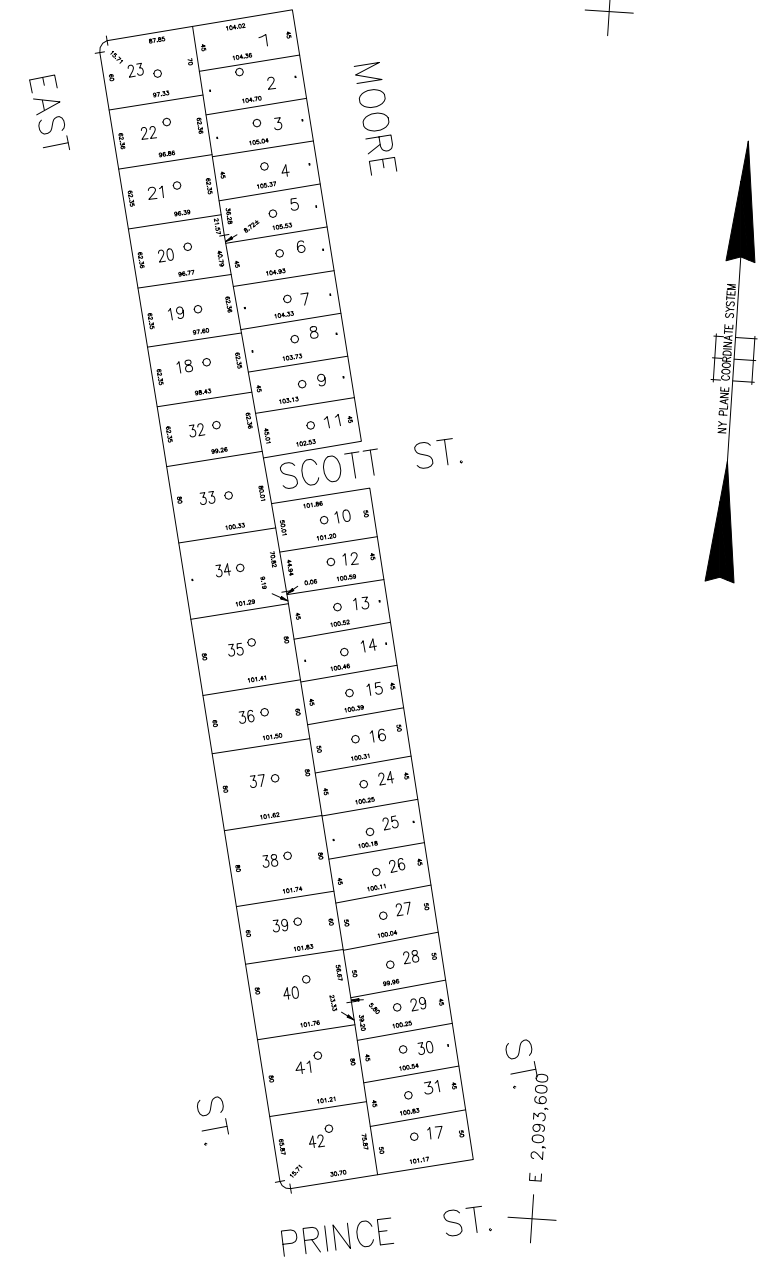
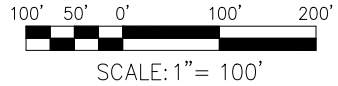


N 194,250 + UNION ST.



N 193,000 + E 2,093,000

S 1,003,600 + E 2,093,600

COPYRIGHT 1998 NASSAU COUNTY

LEGEND	
COUNTY LINE	---
TOWN LINE	- - - -
VILLAGE LINE	— · — · — ·
SCHOOL DISTRICT LINE	— · — · — ·
PROPERTY LINE	— · — · — ·
SPECIAL DISTRICT LINE	— · — · — ·
BLOCK LIMIT	— · — · — ·
LOCATOR POINT	*
TAX MAP PARCEL NO.	246
CALCULATED ACREAGE	754(C)
DEED ACREAGE	174
SCALED DIMENSION	327(S)
DEED DIMENSION	185.69
REFERENCE MAPS	
MAP NO.	

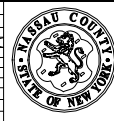
POLICE		DIST
County Police		3
WATER		
Garden City Park		7
LIGHTING		
Town of North Hempstead		30
LIBRARY		
Shelton Rock		90
FIRE		
Garden City Park		43

FIRE PROTECTION		DIST
SANITARY		
REFUSE & GARBAGE		
Albertson-Seaverington-Herricks		67
REFUSE DISPOSAL		
SEWAGE COLLECTION		
Sewage Collection District #2-NHP		H

SPECIAL DISTRICTS		
	DIST	
PUBLIC PARKING		
SEWER		
Nassau County Sewage Disposal District # 2		202
PARK		
New Hyde Park		66
IMPROVEMENT		
SIDEWALK		
Town of North Hempstead		8

DRAINAGE		DIST
FIRE HYDRANT RENTAL		
GARBAGE		
ESCALATOR		
WATER POLLUTION CONTROL		
Town, County, College, Police HQ		1
Town Highway		2

MUNICIPALITIES	
TOWN OF:	
HEMPSTEAD	
NORTH HEMPSTEAD	
OYSTER BAY	
CITY OF:	
GLEN COVE	
LONG BEACH	
VILLAGE OF:	
SCHOOL DISTRICT	
Herricks	9



Nassau County
Department of Assessment
Charles O'Shea, Chairman
Land & Tax Map

Map Last Revised: March 13 2003
SEC. 9
BLK. 582
SHEET 1 OF 1

CODE	SPECIAL	DISTRICT	WITHIN	CODE	SPECIAL	DISTRICT	WITHIN	CODE	SPECIAL	DISTRICT	WITHIN	
740	1	2	202	3	30	43	66	67	7	90	H	8