

N 191,800

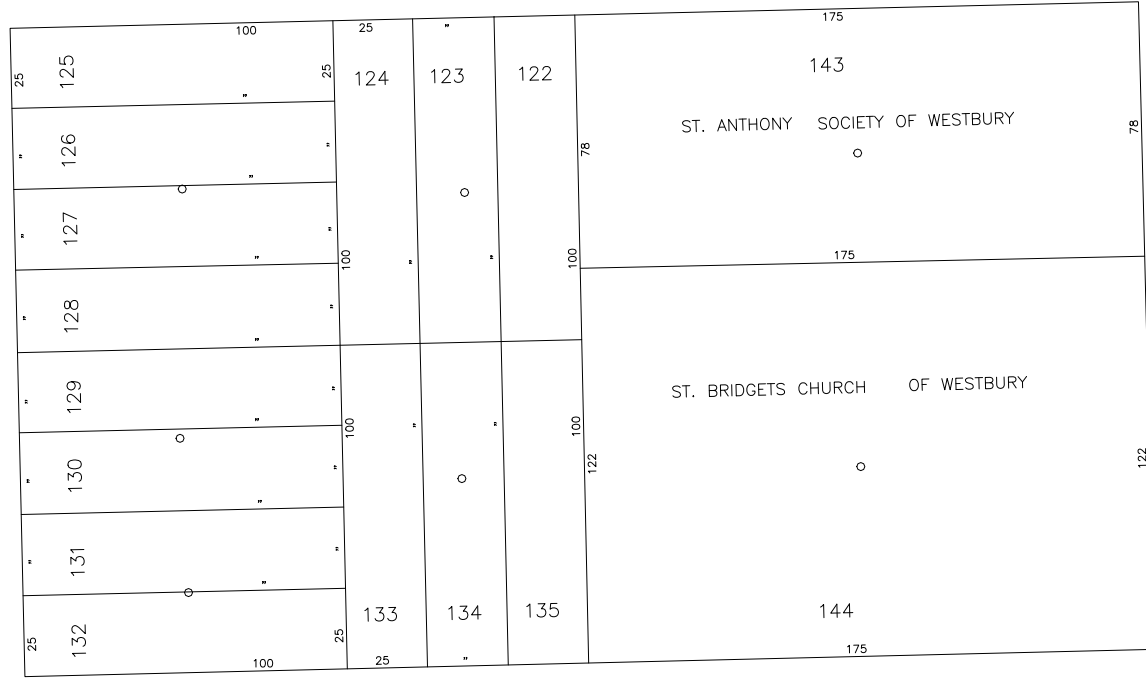
N 191,800

LEXINGTON

AVE.

FULTON ST.

POST AVE.



N 191,550

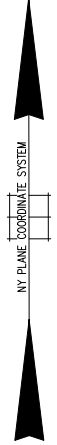
N 191,550

FIFTH

AVE.

E 2,113,700

E 2,114,150



COPYRIGHT 1988 NASSAU COUNTY

LEGEND	
COUNTY LINE	---
TOWN LINE	- - - -
VILLAGE LINE	— · — · —
SCHOOL DISTRICT LINE	— · — · —
PROPERTY LINE	— · — · —
SPECIAL DISTRICT LINE	— · — · —
BLOCK LIMIT	— · — · —
LOCATOR POINT	*
TAX MAP PARCEL NO.	246
CALCULATED ACREAGE	754(C)
DEED ACREAGE	176
SCALED DIMENSION	327(S)
DEED DIMENSION	185.89
REFERENCE MAPS	
MAP NO.	

POLICE		DIST
County Police		3
Westbury		15
LIBRARY		
FIRE		
Westbury		51

SPECIAL DISTRICTS		DIST
FIRE PROTECTION		
SANITARY		
REFUSE & GARBAGE		
REFUSE DISPOSAL		
SEWAGE COLLECTION		
Sewage Collection District #3-CP-W		62

SPECIAL DISTRICTS		DIST
PUBLIC PARKING		
SEWER		
Nassau County Sewage Disposal District # 3		30
PARK		
IMPROVEMENT		
SIDEWALK		

SPECIAL DISTRICTS		DIST
DRAINAGE		
FIRE HYDRANT RENTAL		
GARBAGE		
ESCALATOR		
WATER POLLUTION CONTROL		
Town, County, College, Police HQ		1

MUNICIPALITIES		DIST
TOWN OF:		
HEMPSTEAD		
NORTH HEMPSTEAD		
OYSTER BAY		
CITY OF:		
GLEN COVE		
LONG BEACH		
VILLAGE OF:		
SCHOOL DISTRICT		
Westbury		1



Nassau County
Department of Assessment
Charles O'Shea, Chairman
Land & Tax Map
 Map Last Revised: March 14 2003

SEC. 10
BLK. 127

SHEET 1 OF 1

CODE	SPECIAL	DISTRICT	WITHIN	CODE	SPECIAL	DISTRICT	WITHIN	CODE	SPECIAL	DISTRICT	WITHIN
709	1	15	3	30	51	52					