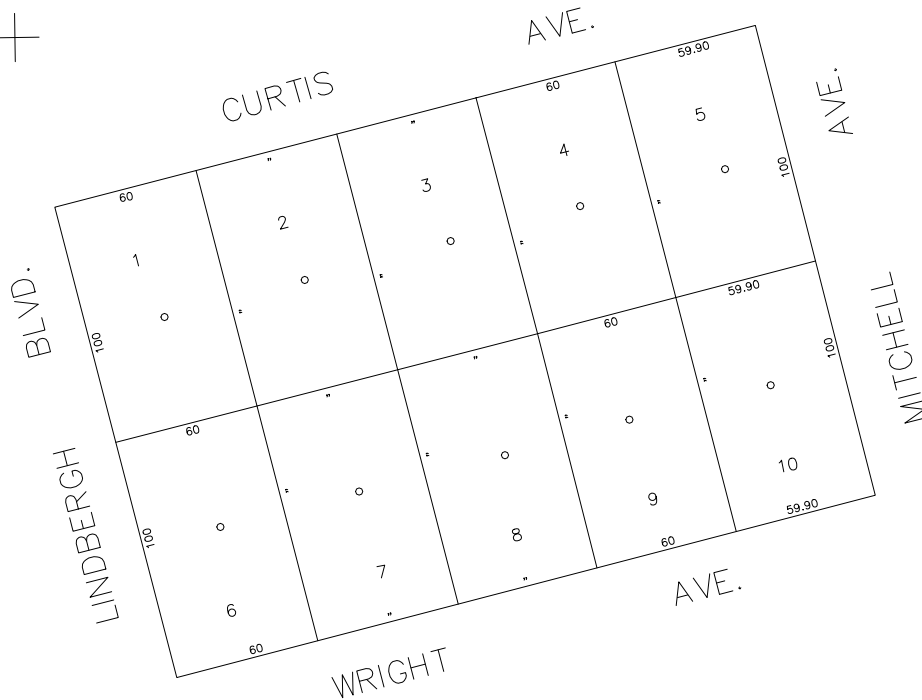


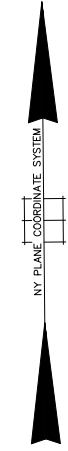
N 190,000

N 189,700



E 2,108,200

E 2,108,600



COPYRIGHT 1988 NASSAU COUNTY

LEGEND

| | |
|-----------------------|-----------|
| COUNTY LINE | --- |
| TOWN LINE | - - - - |
| VILLAGE LINE | — · — · — |
| SCHOOL DISTRICT LINE | — · — · — |
| PROPERTY LINE | — · — · — |
| SPECIAL DISTRICT LINE | — · — · — |
| BLOCK LIMIT | — · — · — |
| LOCATOR POINT | * |
| TAX MAP PARCEL NO. | 246 |
| CALCULATED ACREAGE | 754(C) |
| DEED ACREAGE | 174 |
| SCALED DIMENSION | 327(S) |
| DEED DIMENSION | 185.89 |
| REFERENCE MAPS | |
| MAP NO. | |

| | |
|-------------------------|------|
| POLICE | DIST |
| County Police | 3 |
| Carle Place | |
| WATER | |
| Carle Place | 6 |
| LIGHTING | |
| Town of North Hempstead | 30 |
| LIBRARY | |
| FIRE | |

| | |
|-----------------------------------|------|
| FIRE PROTECTION | DIST |
| Carle Place | 41 |
| SANITARY | |
| REFUSE & GARBAGE | |
| REFUSE DISPOSAL | |
| SEWAGE COLLECTION | |
| Sewage Collection District #3-RIA | F |

| | | |
|--|------|--|
| SPECIAL DISTRICTS | | |
| PUBLIC PARKING | DIST | |
| SEWER | | |
| Nassau County Sewage Disposal District # 3 | 30 | |
| PARK | | |
| IMPROVEMENT | | |
| SIDEWALK | | |
| Town of North Hempstead | 8 | |

| | |
|----------------------------------|------|
| DRAINAGE | DIST |
| FIRE HYDRANT RENTAL | |
| GARBAGE | |
| Carle Place | 60 |
| ESCALATOR | |
| WATER POLLUTION CONTROL | |
| Town, County, College, Police HQ | 1 |
| Town Highway | 2 |

| | | |
|------------------------|----|--|
| MUNICIPALITIES | | |
| TOWN OF: | | |
| HEMPSTEAD | | |
| NORTH HEMPSTEAD | | |
| OYSTER BAY | | |
| CITY OF: | | |
| GLEN COVE | | |
| LONG BEACH | | |
| VILLAGE OF: | | |
| SCHOOL DISTRICT | | |
| Carle Place | 11 | |



Nassau County
 Department of Assessment
 Charles O'Shea, Chairman
Land & Tax Map

Map Last Revised: March 14 2003

SEC. 10
BLK. 40

SHEET 1 OF 1

| | | | | | | | | | | | |
|------|------------------|----------|--------|------|---------|----------|--------|------|---------|----------|--------|
| CODE | SPECIAL | DISTRICT | WITHIN | CODE | SPECIAL | DISTRICT | WITHIN | CODE | SPECIAL | DISTRICT | WITHIN |
| 781 | 1 2 3 30 39 41 6 | 60 | F 8 | | | | | | | | |