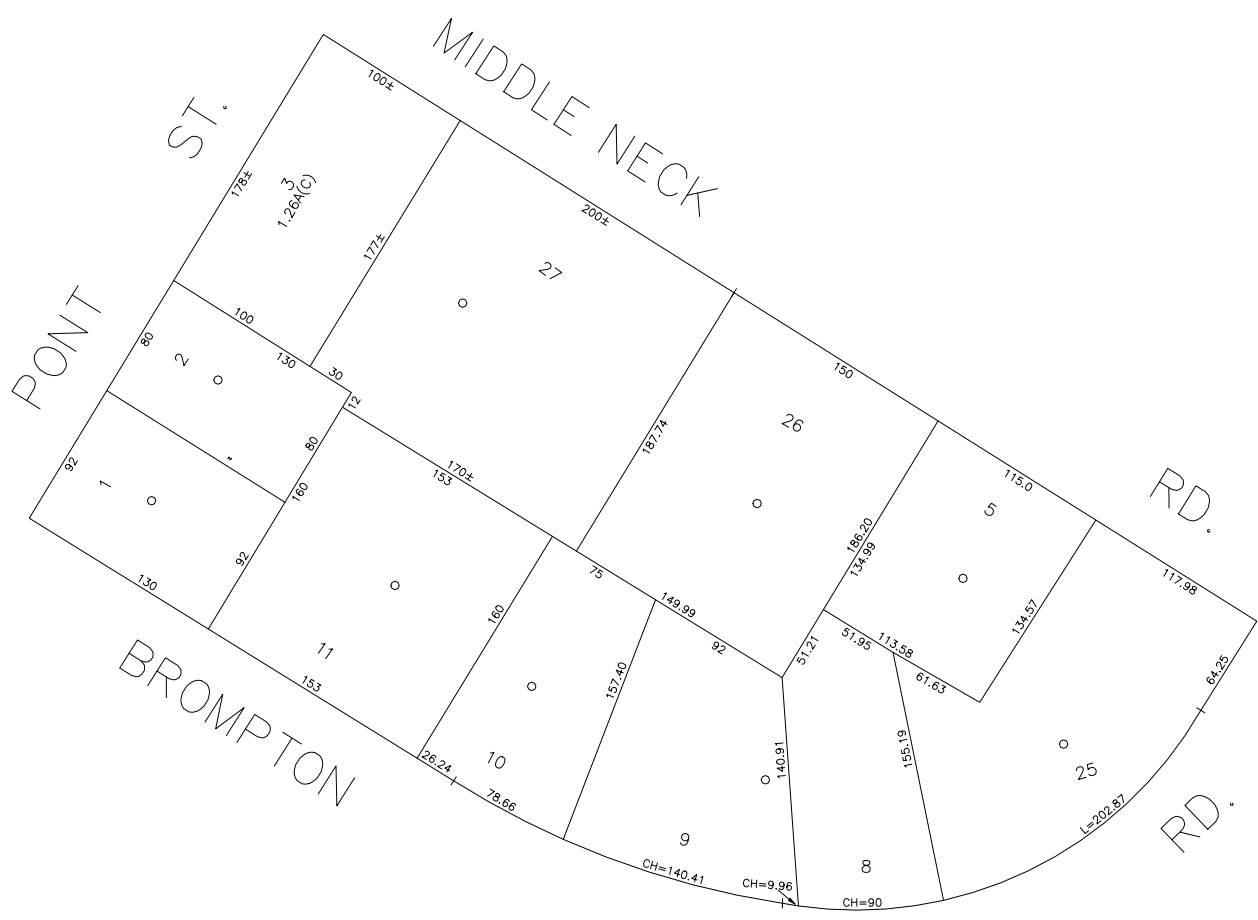


N 204,300

N 203,650

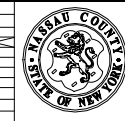


E 2,075,900

E 2,076,650

COPYRIGHT 1982 NASSAU COUNTY

LEGEND				SPECIAL DISTRICTS				MUNICIPALITIES				
COUNTY LINE	---	POLICE	DIST	FIRE PROTECTION	DIST	PUBLIC PARKING	DIST	TOWN OF:				
TOWN LINE	---	County Police	3	SANITARY		SEWER		HEMPSTEAD				
VILLAGE LINE	---	Water		REFUSE & GARBAGE		PARK		NORTH HEMPSTEAD				
SCHOOL DISTRICT LINE	---	Manhasset-Lakeville	10	REFUSE DISPOSAL		Great Neck	57	OYSTER BAY				
PROPERTY LINE	---	LIGHTING		SEWAGE COLLECTION		IMPROVEMENT		CITY OF:				
SPECIAL DISTRICT LINE	---	LIBRARY				SIDEWALK		GLEN COVE				
BLOCK LIMIT	---	FIRE	46					LONG BEACH				
LOCATOR POINT	*	Manhasset-Lakeville						VILLAGE OF:				
TAX MAP PARCEL NO.	246											
CALCULATED ACREAGE	754(C)							SCHOOL DISTRICT				
DEED ACREAGE	174							Great Neck	7			
SCALED DIMENSION	327(S)											
DEED DIMENSION	185.89											
REFERENCE MAPS												
MAP NO.												
CODE	1	10	3	46	57	81						
798												



**Nassau County**  
**Department of Assessment**  
Charles O'Shea, Chairman  
**Land & Tax Map**

Map Last Revised: April 18 2003  
**SEC. 2**  
**BLK. 250**  
**SHEET 1 OF 1**