

50' 25' 0' 50' 100'

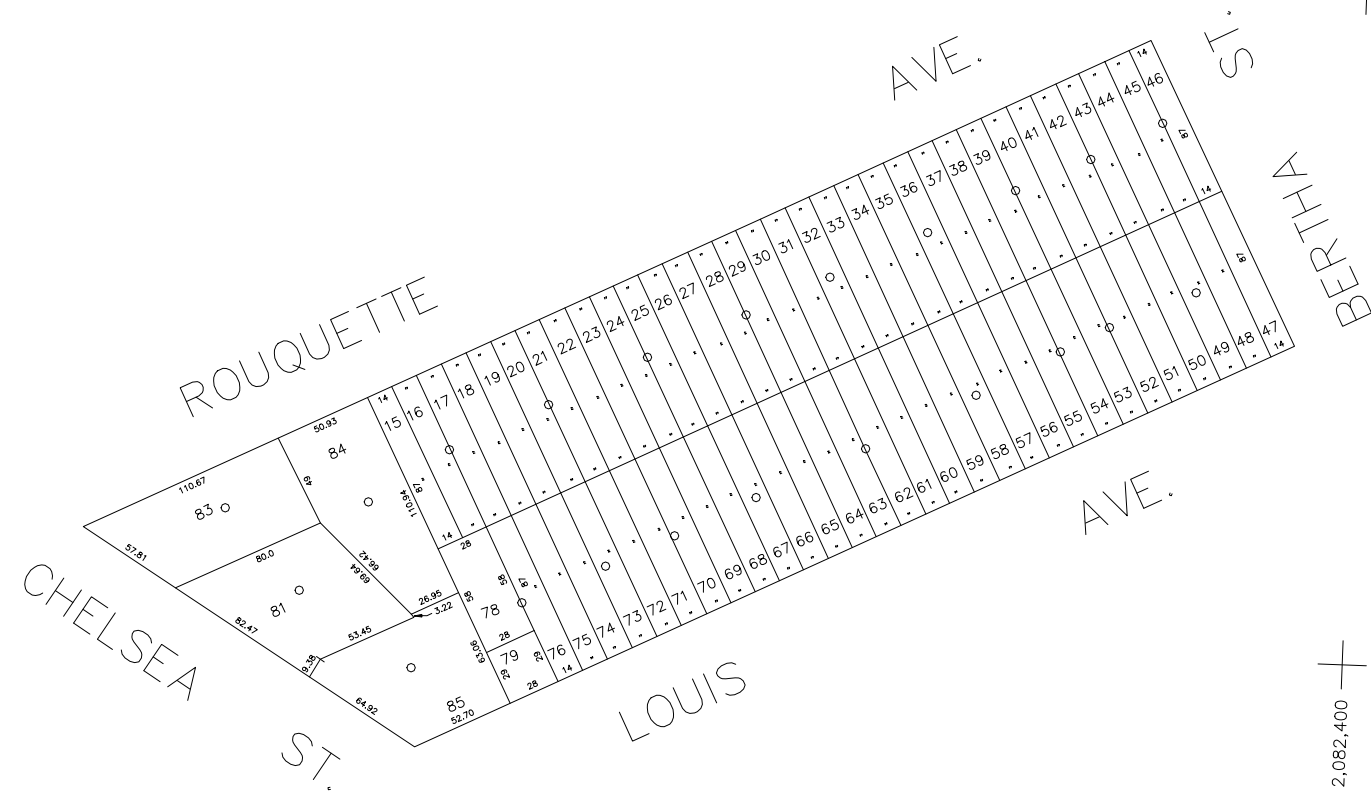


SCALE: 1" = 50'

N 177,850

N 177,500  
E 2,081,650

E 2,082,400



COPYRIGHT 1982 NASSAU COUNTY

LEGEND	
COUNTY LINE	---
TOWN LINE	- - - -
VILLAGE LINE	— · — · —
SCHOOL DISTRICT LINE	— · — · —
PROPERTY LINE	— · — · —
SPECIAL DISTRICT LINE	— · — · —
BLOCK LIMIT	— · — · —
LOCATOR POINT	*
TAX MAP PARCEL NO.	246
CALCULATED ACREAGE	75M(C)
DEED ACREAGE	176
SCALED DIMENSION	327(S)
DEED DIMENSION	185.89
REFERENCE MAPS	
MAP NO.	

POLICE		DIST
County Police		3
<b>WATER</b>		
<b>LIGHTING</b>		
<b>LIBRARY</b>		
<b>FIRE</b>		

FIRE PROTECTION		DIST
<b>SANITARY</b>		
Sanitary District 6		93
<b>REFUSE &amp; GARBAGE</b>		
<b>REFUSE DISPOSAL</b>		
<b>SEWAGE COLLECTION</b>		
Sewage Collection District #2-PP		D

SPECIAL DISTRICTS		
<b>PUBLIC PARKING</b>		
<b>SEWER</b>		
Nassau County Sewage Disposal District #2		202
<b>PARK</b>		
<b>IMPROVEMENT</b>		
<b>SIDEWALK</b>		

DRAINAGE		DIST
<b>FIRE HYDRANT RENTAL</b>		
<b>GARBAGE</b>		
<b>ESCALATOR</b>		
<b>WATER POLLUTION CONTROL</b>		
Town, County, College, Police HQ		1

MUNICIPALITIES	
TOWN OF:	
HEMPSTEAD	
NORTH HEMPSTEAD	
OYSTER BAY	
CITY OF:	
GLEN COVE	
LONG BEACH	
VILLAGE OF:	
SCHOOL DISTRICT	
Elmont	18



**Nassau County**  
**Department of Assessment**  
*Charles O'Shea, Chairman*  
**Land & Tax Map**

Map Last Revised: February 7 2003

**SEC. 32**  
**BLK. 351**

**SHEET 1 OF 1**

CODE	SPECIAL	DISTRICT	WITHIN	CODE	SPECIAL	DISTRICT	WITHIN	CODE	SPECIAL	DISTRICT	WITHIN
099	1	202	3	93	D						