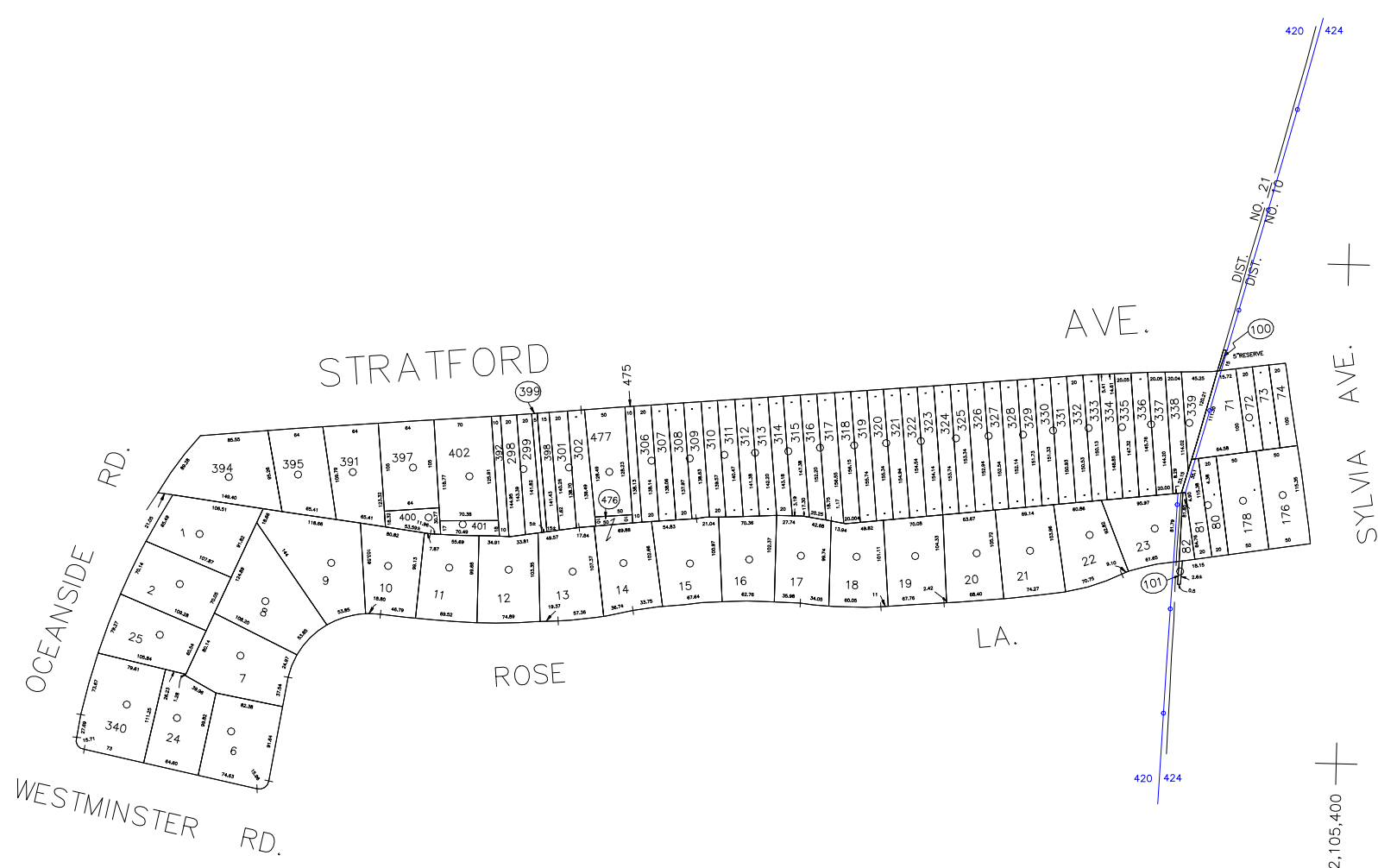


N 166,000

N 165,400
E 2,103,750

N 165,400

E 2,105,400



LEGEND

COUNTY LINE	---
TOWN LINE	- - - -
VILLAGE LINE	— · — · —
SCHOOL DISTRICT LINE	— · — · —
PROPERTY LINE	— · — · —
SPECIAL DISTRICT LINE	— · — · —
BLOCK LIMIT	— · — · —
LOCATOR POINT	*
TAX MAP PARCEL NO.	246
CALCULATED ACREAGE	754(C)
DEED ACREAGE	176
SCALED DIMENSION	327(S)
DEED DIMENSION	185.89
REFERENCE MAPS	
MAP NO.	

POLICE		DIST
County Police		3
WATER		DIST
Town of Hempstead		47
LIBRARY		DIST
Baldwin		56
South Hempstead		76

FIRE PROTECTION		DIST
Sanitary District 2		02
REFUSE & GARBAGE		DIST
Town of Hempstead		X
SEWAGE COLLECTION		DIST
Sewage Collection District #2-B		B

SPECIAL DISTRICTS

PUBLIC PARKING		DIST
Baldwin		10
SEWER		DIST
Nassau County Sewage Disposal District #2		202
PARK		DIST
Town of Hempstead		V
IMPROVEMENT		DIST
SIDEWALK		DIST

DRAINAGE		DIST
FIRE HYDRANT RENTAL		DIST
GARBAGE		DIST
ESCALATOR		DIST
WATER POLLUTION CONTROL		DIST
Town, County, College, Police HQ		1
Town Building Dept, Zoning & Appeals, Unincorporated Area		2

MUNICIPALITIES

TOWN OF: HEMPSTEAD	
NORTH HEMPSTEAD	
OYSTER BAY	
CITY OF: GLEN COVE	
LONG BEACH	
VILLAGE OF:	
SCHOOL DISTRICT	
Rockville Centre	21
Baldwin	10



Nassau County
Department of Assessment
Charles O'Shea, Chairman
Land & Tax Map

Map Last Revised: July 16 2002

SEC. 36
BLK. 503

SHEET 1 OF 1

CODE	SPECIAL	DISTRICT	WITHIN	CODE	SPECIAL	DISTRICT	WITHIN	CODE	SPECIAL	DISTRICT	WITHIN
420	1	2	202	3	47	76	02	B	V	X	X
424	1	10	2	202	3	47	02	B	V	V	X