

80' 40' 0' 80' 160'



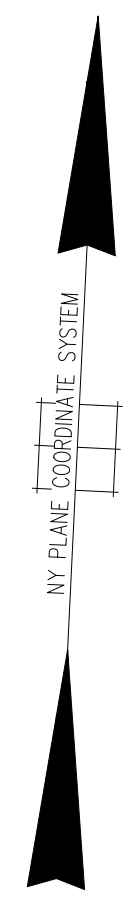
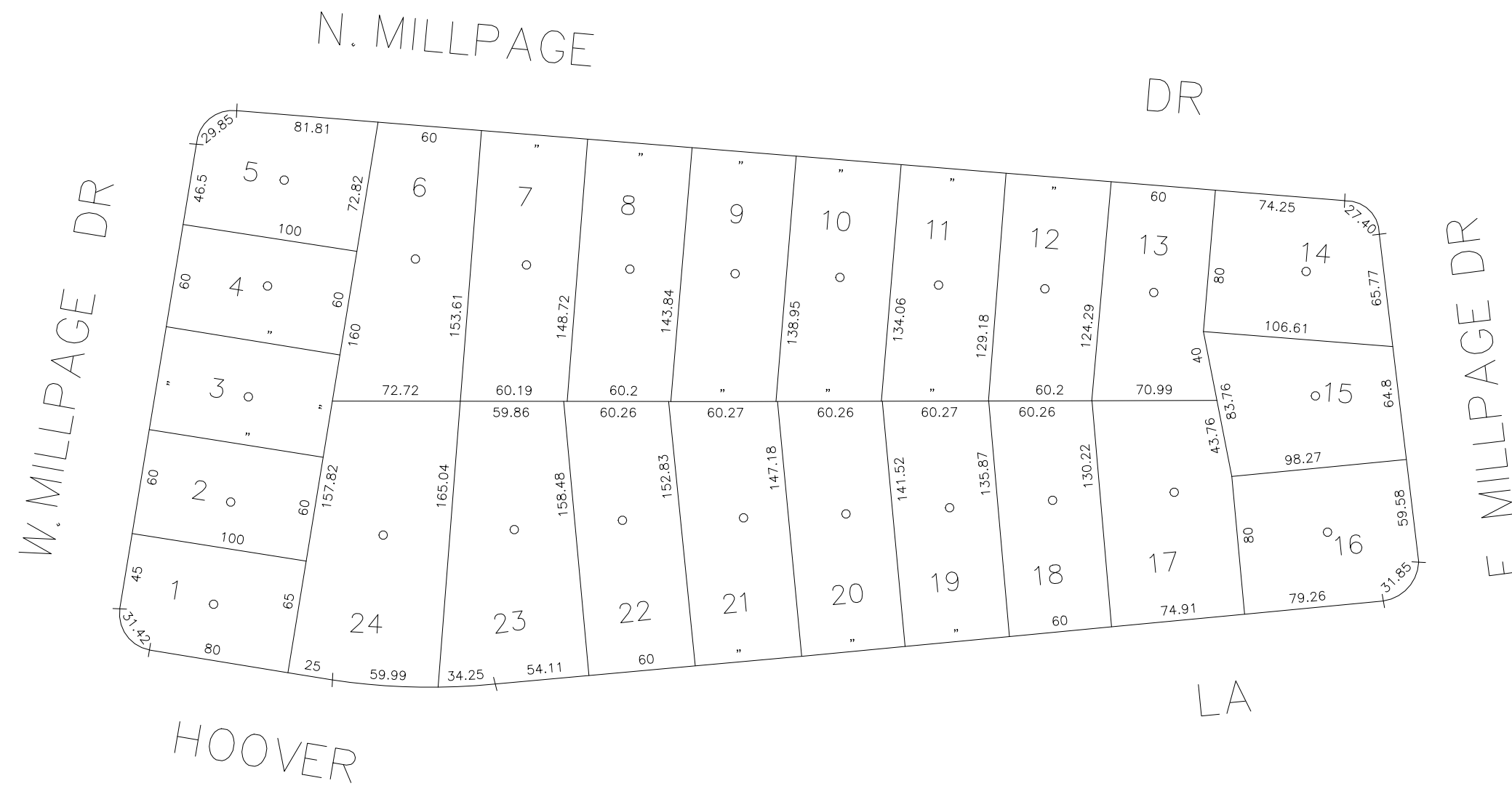
SCALE: 1" = 80'

N 184,750

N 184,250  
E 2,143,500

N 184,750

E 2,144,500



COPYRIGHT 1998 NASSAU COUNTY

LEGEND														SPECIAL DISTRICTS														MUNICIPALITIES																																																																					
COUNTY LINE	---													POLICE	DIST													FIRE PROTECTION	DIST													PUBLIC PARKING	DIST													DRAINAGE	DIST													TOWN OF:	Hempstead																										
TOWN LINE	---													County Police	3													SANITARY														Town of Oyster Bay - Unincorporated Area	A													Unincorporated Area of District #1	D													NORTH HEMPSTEAD																											
VILLAGE LINE	---													WATER	5													REFUSE & GARBAGE														Nassau County Sewage Disposal District #3	39													Garbage District #1	93													OYSTER BAY																											
SCHOOL DISTRICT LINE	---													Bethpage Ext. (New)														REFUSE DISPOSAL														PARK	62													ESCALATOR														CITY OF:	Glen Cove																										
PROPERTY LINE	---													LIGHTING	23													SEWAGE COLLECTION	19													WATER POLLUTION CONTROL														LONG BEACH																																									
SPECIAL DISTRICT LINE	---													Town of Oyster Bay														Town of Oyster Bay	55													IMPROVEMENT														Town, County, College, Police HQ	1													VILLAGE OF:	Plainedge																										
BLOCK LIMIT	---													LIBRARY														SIDEWALK														Town Highway	2													SCHOOL DISTRICT	18																																								
LOCATOR POINT	•													FIRE																																																																																			
TAX MAP PARCEL NO.	246													Bethpage	31																																																																																		
CALCULATED ACREAGE	754(C)																																																																																																
DEED ACREAGE	1764																																																																																																
SCALED DIMENSION	327(S)																																																																																																
DEED DIMENSION	185.69																																																																																																
REFERENCE MAPS																																																																																																	
MAP NO. 4686																																																																																																	



Nassau County  
Department of Assessment

Land & Tax Map

Map Last Revised May 07 2024

SEC. 49  
BLK. 176

SHEET 1 OF 1