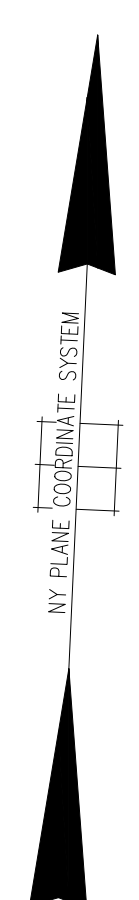
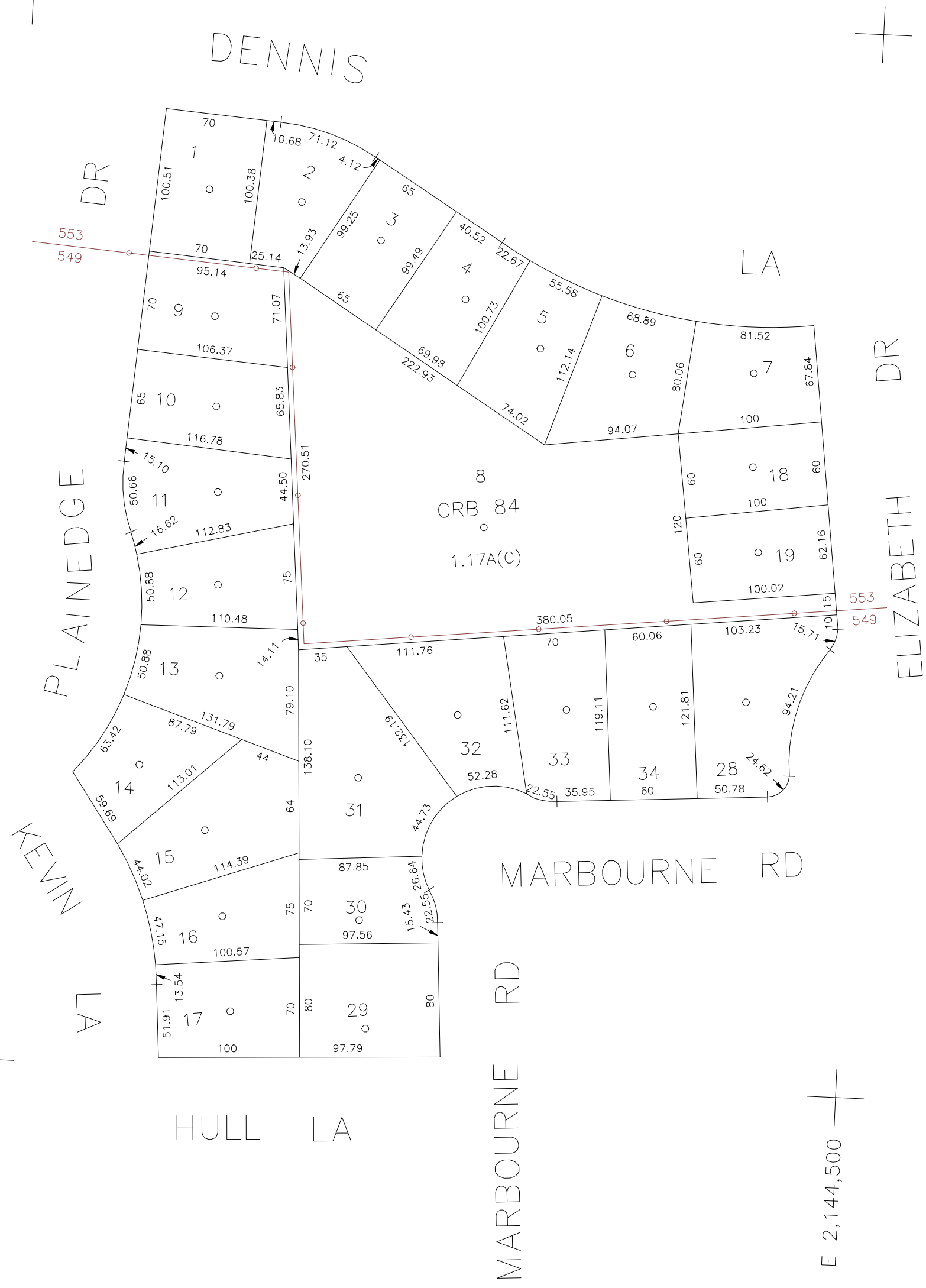


80' 40' 0' 80' 160'



SCALE: 1" = 80'

N 180,900



N 180,150

E 2,143,900

E 2,144,500

LOT NO: 8
COUNTY of NASSAU

COPYRIGHT 1998 NASSAU COUNTY

LEGEND

COUNTY LINE	---
TOWN LINE	- - - -
VILLAGE LINE	- · - · -
SCHOOL DISTRICT LINE	- · - · -
PROPERTY LINE	---
SPECIAL DISTRICT LINE	- · - · -
BLOCK LIMIT	— · — · —
LOCATOR POINT	•
TAX MAP PARCEL NO.	246
CALCULATED ACREAGE	75A(C)
DEED ACREAGE	176A
SCALED DIMENSION	327(S)
DEED DIMENSION	185.69

REFERENCE MAPS
MAP NO. 5057,5065,5347,5471,5605

POLICE	DIST
County Police	3
WATER	DIST
South Farmingdale & Ext. #1	16
Bethpage Ext. (New)	5
LIGHTING	DIST
Town of Oyster Bay	23
LIBRARY	DIST
FIRE	DIST
Bethpage	31

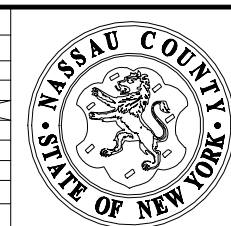
FIRE PROTECTION	DIST
SANITARY	DIST
REFUSE & GARBAGE	DIST
REFUSE DISPOSAL	DIST
SEWAGE COLLECTION	DIST
Sewage Collection District #3-F	21
Town of Oyster Bay	55

SPECIAL DISTRICTS

PUBLIC PARKING	DIST
Town of Oyster Bay - Unincorporated Area	A
SEWER	DIST
Nassau County Sewage Disposal District #3	39
PARK	DIST
Bethpage	62
IMPROVEMENT	DIST
SIDEWALK	DIST

DRAINAGE	DIST
Unincorporated Area of District #1	D
FIRE HYDRANT RENTAL	DIST
GARBAGE	DIST
Garbage District #1	93
ESCALATOR	DIST
WATER POLLUTION CONTROL	DIST
Town, County, College, Police HQ	1
Town Highway	2

MUNICIPALITIES	DIST
TOWN OF: HEMPSTEAD NORTH HEMPSTEAD OYSTER BAY CITY OF: GLEN COVE LONG BEACH VILLAGE OF:	
SCHOOL DISTRICT	DIST
Plainedge	18



Nassau County
Department of Assessment

Land & Tax Map

Map Last Revised May 07 2024

SEC. 49
BLK. 199

SHEET 1 OF 1

CODE	SPECIAL	DISTRICT	WITHIN	CODE	SPECIAL	DISTRICT	WITHIN	CODE	SPECIAL	DISTRICT	WITHIN
549	1	16	2	21	23	3	31	39	5	55	62
553	1	2	21	23	3	31	39	5	55	62	93