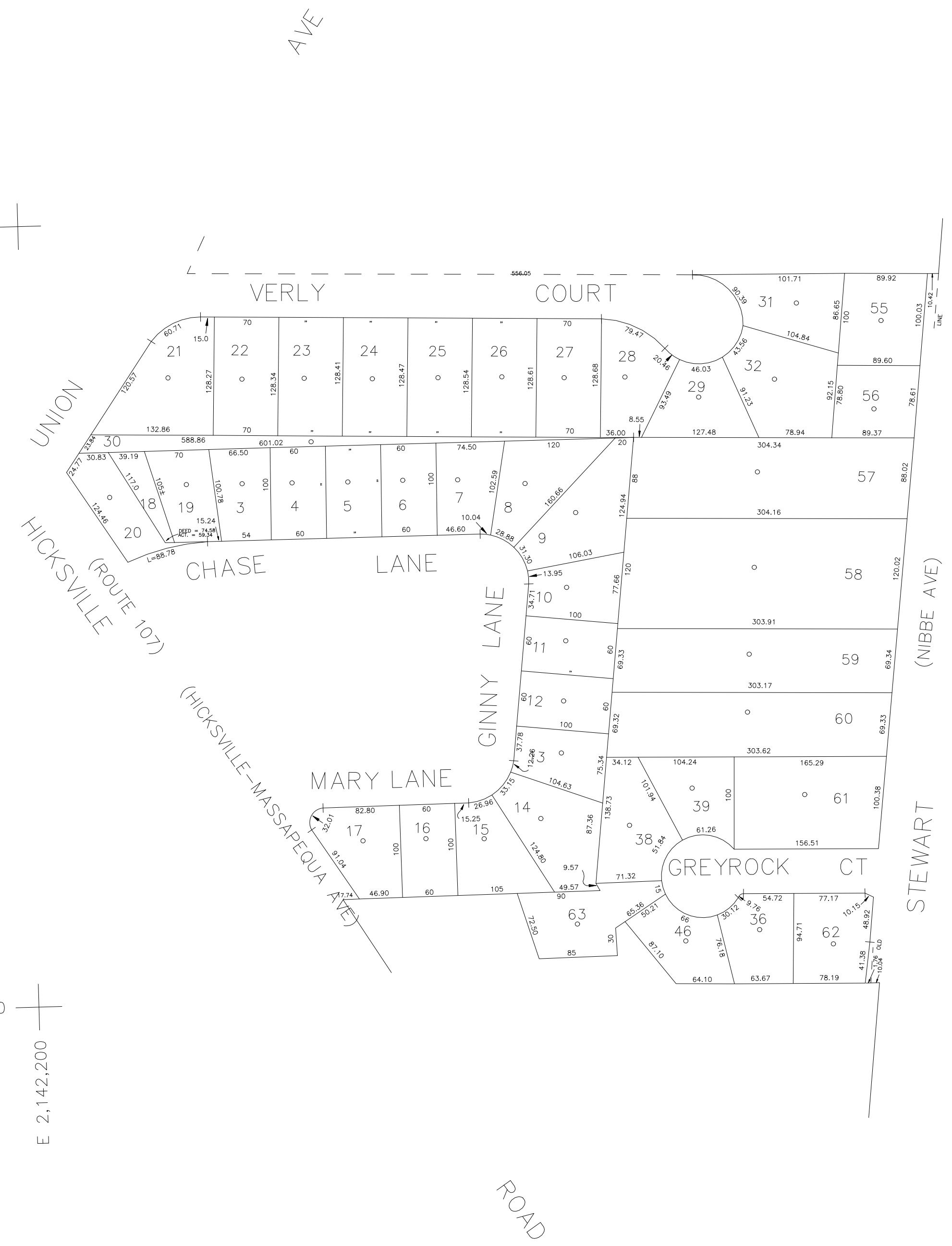


100' 50' 0' 100' 200'



SCALE: 1" = 100'

N 181,700



N 180,850

E 2,142,200

E 2,143,350



COPYRIGHT 1998 NASSAU COUNTY

**LEGEND**

COUNTY LINE	---
TOWN LINE	---
VILLAGE LINE	---
SCHOOL DISTRICT LINE	---
PROPERTY LINE	---
SPECIAL DISTRICT LINE	---
BLOCK LIMIT	---
LOCATOR POINT	•
TAX MAP PARCEL NO.	246
CALCULATED ACREAGE	754(C)
DEED ACREAGE	1764
SCALED DIMENSION	327(S)
DEED DIMENSION	185.69

REFERENCE MAPS  
MAP NO. 5058,6666,7433,H-1671

POLICE	DIST
County Police	3
WATER	DIST
Bethpage Ext. (New)	5
LIGHTING	DIST
Town of Oyster Bay	23
LIBRARY	DIST
FIRE	DIST
Bethpage	31

FIRE PROTECTION	DIST
SANITARY	DIST
REFUSE & GARBAGE	DIST
REFUSE DISPOSAL	DIST
SEWAGE COLLECTION	DIST
Sewage Collection District #3-F	21
Town of Oyster Bay	55

**SPECIAL DISTRICTS**

PUBLIC PARKING	DIST
Town of Oyster Bay - Unincorporated Area	A
SEWER	DIST
Nassau County Sewage Disposal District #3	39
PARK	DIST
Bethpage	62
IMPROVEMENT	DIST
SIDEWALK	DIST

DRAINAGE	DIST
Unincorporated Area of District #1	D
FIRE HYDRANT RENTAL	DIST
GARBAGE	DIST
Garbage District #1	93
ESCALATOR	DIST
WATER POLLUTION CONTROL	DIST
Town, County, College, Police HQ	1
Town Highway	2

**MUNICIPALITIES**

TOWN OF: HEMPSTEAD	
NORTH HEMPSTEAD	
OYSTER BAY	
CITY OF: GLEN COVE	
LONG BEACH	
VILLAGE OF:	
SCHOOL DISTRICT	DIST
Flinedge	18



Nassau County Department of Assessment

Land & Tax Map

Map Last Revised 07 2024

SEC. 49  
BLK. 201

SHEET 1 OF 1

CODE	SPECIAL	DISTRICT	WITHIN	CODE	SPECIAL	DISTRICT	WITHIN	CODE	SPECIAL	DISTRICT	WITHIN		
553	1	2	21	23	3	31	39	5	55	62	93	A	D