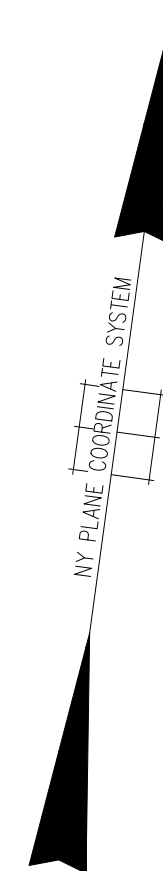
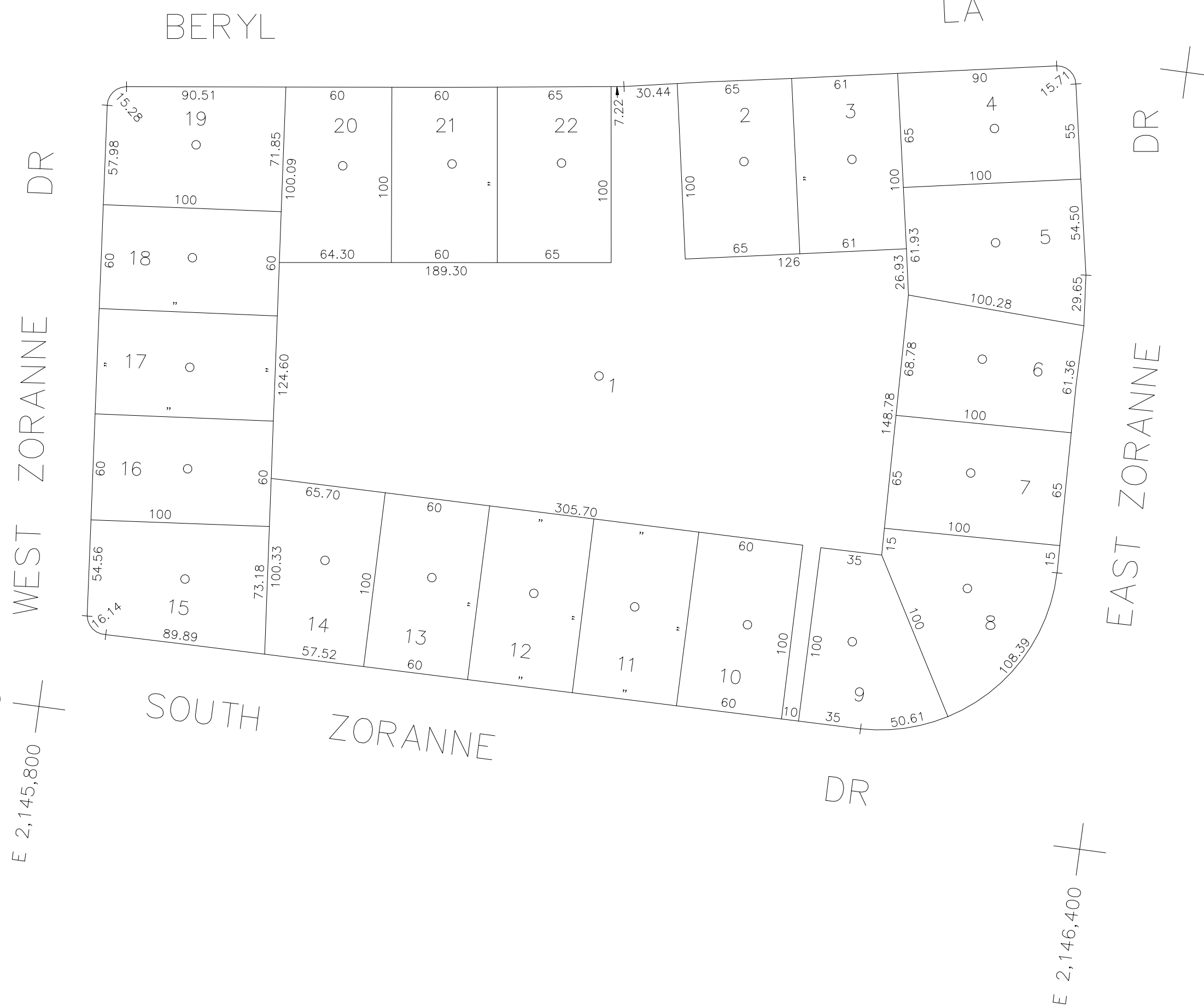




N 180,800



N 180,350
E 2,145,800

E 2,146,400

LOT No:1
TOWN of OYSTER BAY

COPYRIGHT 1998 NASSAU COUNTY

LEGEND													SPECIAL DISTRICTS													MUNICIPALITIES																									
COUNTY LINE	---												POLICE	DIST 3												DRAINAGE	DIST D												TOWN OF: HEMPSTEAD	---											
TOWN LINE	---												County Police	---												Unincorporated Area of District #1	---												NORTH HEMPSTEAD	---											
VILLAGE LINE	---												WATER	DIST 5												FIRE HYDRANT RENTAL	---												OYSTER BAY	---											
SCHOOL DISTRICT LINE	---												Bethpage Ext. (New)	---												Garbage District #1	DIST 93												CITY OF: GLEN COVE	---											
PROPERTY LINE	---												LIGHTING	DIST 23												ESCALATOR	---												LONG BEACH	---											
SPECIAL DISTRICT LINE	---												Town of Oyster Bay	---												WATER POLLUTION CONTROL	---												VILLAGE OF:	---											
BLOCK LIMIT	---												LIBRARY	---												Town, County, College, Police HQ	DIST 1												SCHOOL DISTRICT	DIST 18											
LOCATOR POINT	•												FIRE	DIST 31												Town Highway	DIST 2												Plainedge	---											
TAX MAP PARCEL NO.	246												Bethpage	---												SIDEWALK	---												SEC. 49	---											
CALCULATED ACREAGE	754(C)													---													---												BLK. 238	---											
DEED ACREAGE	1764													---													---												SHEET 1 OF 1	---											
SCALED DIMENSION	327(S)													---													---													---											
DEED DIMENSION	185.69													---													---													---											
REFERENCE MAPS	---													---													---													---											
MAP NO. 5383	---													---													---													---											