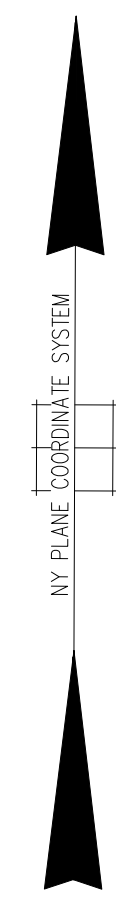
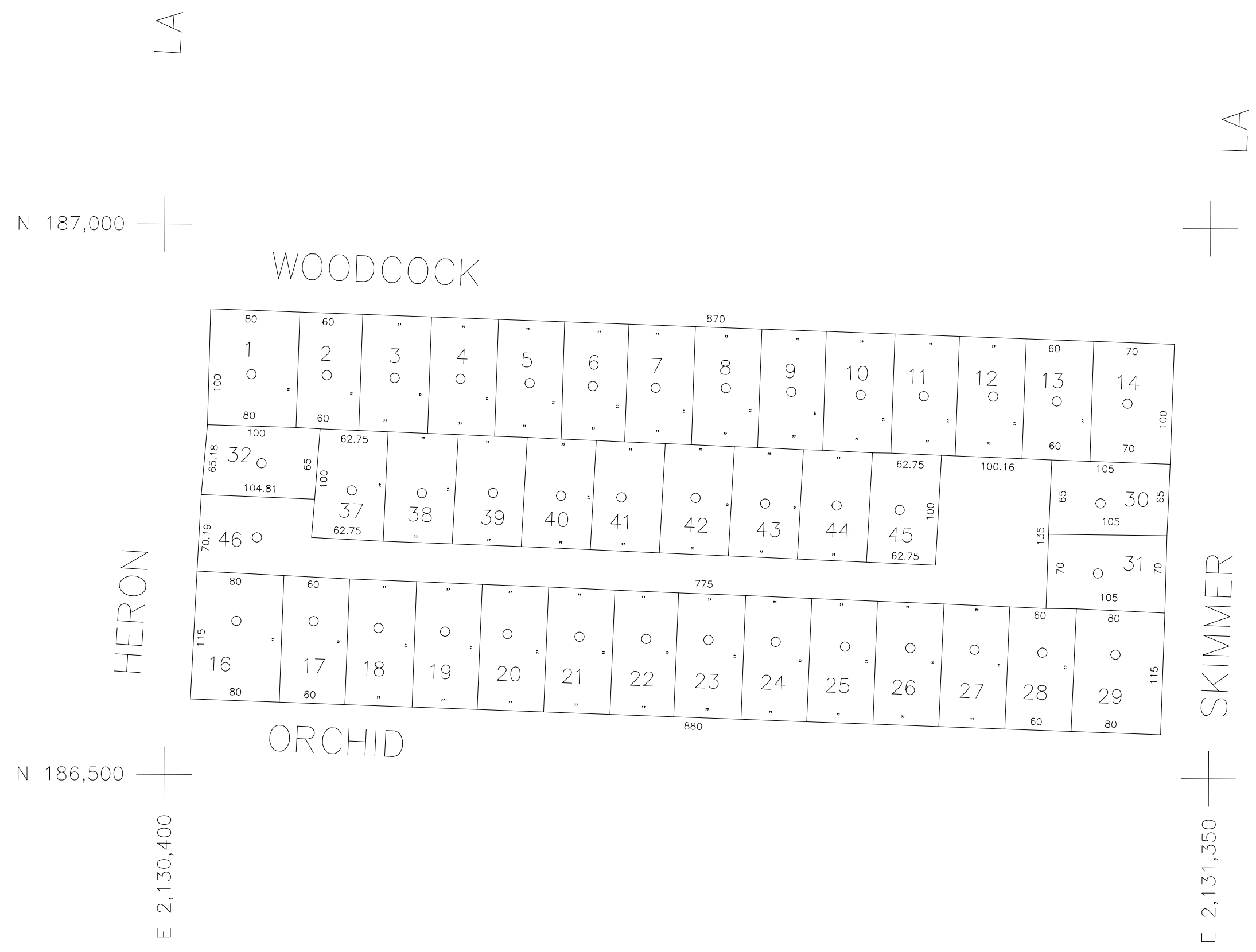


100' 50' 0' 100' 200'

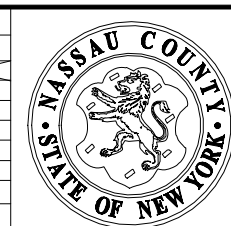


SCALE: 1" = 100'

COPYRIGHT 1998 NASSAU COUNTY



LEGEND										SPECIAL DISTRICTS										MUNICIPALITIES																													
COUNTY LINE	---									POLICE	DIST 3									FIRE PROTECTION	DIST 18									DRAINAGE	DIST 1									TOWN OF: HEMPSTEAD	DIST 5								
TOWN LINE	---									County Police										SANITARY										FIRE HYDRANT RENTAL										NORTH HEMPSTEAD									
VILLAGE LINE	---									WATER	DIST 126									SEWER	Nassau County Sewage Disposal District #3 39									GARBAGE										OYSTER BAY									
SCHOOL DISTRICT LINE	---									Levittown										REFUSE & GARBAGE	Town of Hempstead L									ESCALATOR										CITY OF: GLEN COVE									
PROPERTY LINE	---									LIGHTING	Town of Hempstead 47									REFUSE DISPOSAL	Town of Hempstead X									PARK	Levittown 118									LONG BEACH									
SPECIAL DISTRICT LINE	---									LIBRARY										SEWAGE COLLECTION	Sewage Collection District #3-H 18									IMPROVEMENT										VILLAGE OF:									
BLOCK LIMIT	---									FIRE	Levittown 112									SIDEWALK										WATER POLLUTION CONTROL	Town, County, College, Police HQ 1									SCHOOL DISTRICT	Levittown 5								
LOCATOR POINT	•									Levittown																				Town Building Dept, Zoning & Appeal, Unincorporated Area																			
TAX MAP PARCEL NO.	246																																																
CALCULATED ACREAGE	754(C)																																																
DEED ACREAGE	1764																																																
SCALED DIMENSION	327(S)																																																
DEED DIMENSION	185.69																																																
REFERENCE MAPS																																																	
MAP NO. 4735,4439,4782																																																	



Nassau County Department of Assessment

Land & Tax Map

Map Last Revised July 05 2024

SEC. 45
BLK. 257

SHEET 1 OF 1