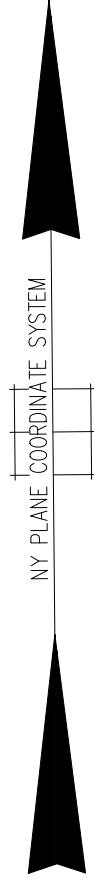


100' 50' 0' 100' 200'



SCALE: 1" = 100'

A

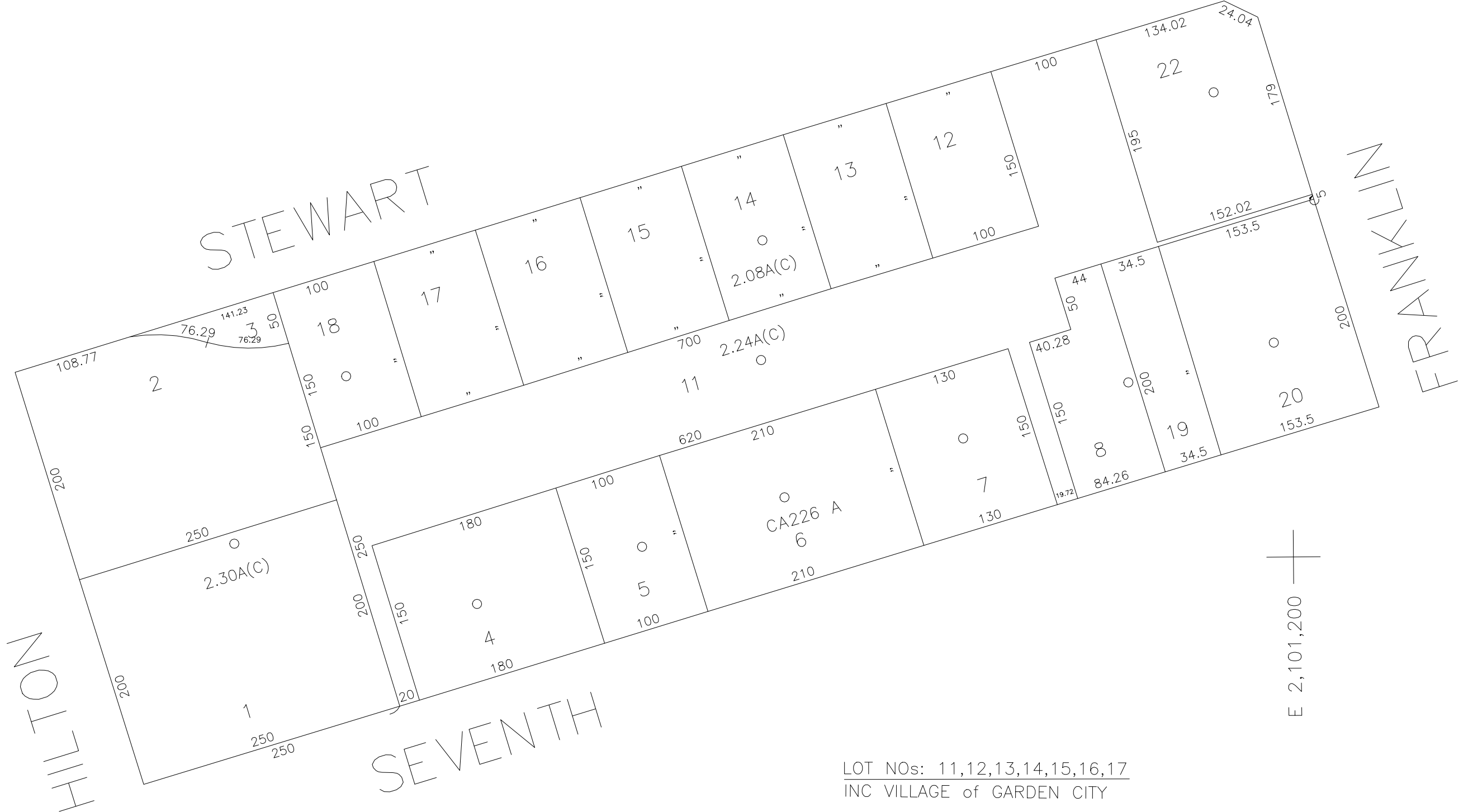


N 182,750

AVE

N 182,150

E 2,099,900



LOT NOS: 11,12,13,14,15,16,17
 INC VILLAGE of GARDEN CITY
 CA-226A HAMPSHIRE HOUSE CONDOMINIUM

LEGEND

COUNTY LINE	---
TOWN LINE	----
VILLAGE LINE	-----
SCHOOL DISTRICT LINE	-.-.-.-
PROPERTY LINE	_____
SPECIAL DISTRICT LINE	_____
BLOCK LIMIT
LOCATOR POINT	•
TAX MAP PARCEL NO.	246
CALCULATED ACREAGE	754(C)
DEED ACREAGE	1764
SCALED DIMENSION	327(S)
DEED DIMENSION	185.69
REFERENCE MAPS	
MAP NO. -	

POLICE	DIST
WATER	
LIGHTING	
LIBRARY	
FIRE	

FIRE PROTECTION	DIST
SANITARY	
REFUSE & GARBAGE	
REFUSE DISPOSAL	
SEWAGE COLLECTION	

SPECIAL DISTRICTS

PUBLIC PARKING	DIST
SEWER	Nassau County Sewage Disposal District #2 202
PARK	
IMPROVEMENT	
SIDEWALK	

DRAINAGE	DIST
FIRE HYDRANT RENTAL	
GARBAGE	
ESCALATOR	
WATER POLLUTION CONTROL	
Town, County, College, Police HQ	1

MUNICIPALITIES	
TOWN OF: HEMPSTEAD	
NORTH HEMPSTEAD	
OYSTER BAY	
CITY OF: GLEN COVE	
LONG BEACH	
VILLAGE OF: Incorporated Village of Garden City	
SCHOOL DISTRICT	18
Garden City	



Nassau County Department of Assessment

Land & Tax Map

Map Last Revised July 05 2024

SEC. 34
BLK. 70

SHEET 1 OF 1

CODE	SPECIAL	DISTRICT	WITHIN	CODE	SPECIAL	DISTRICT	WITHIN	CODE	SPECIAL	DISTRICT	WITHIN
401	1	202									

COPYRIGHT 1998 NASSAU COUNTY