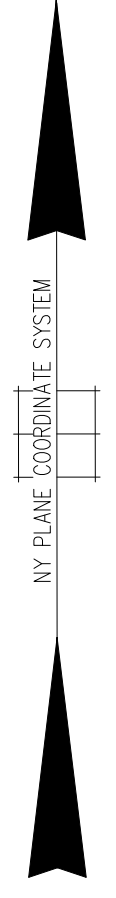




SCALE: 1" = 200'

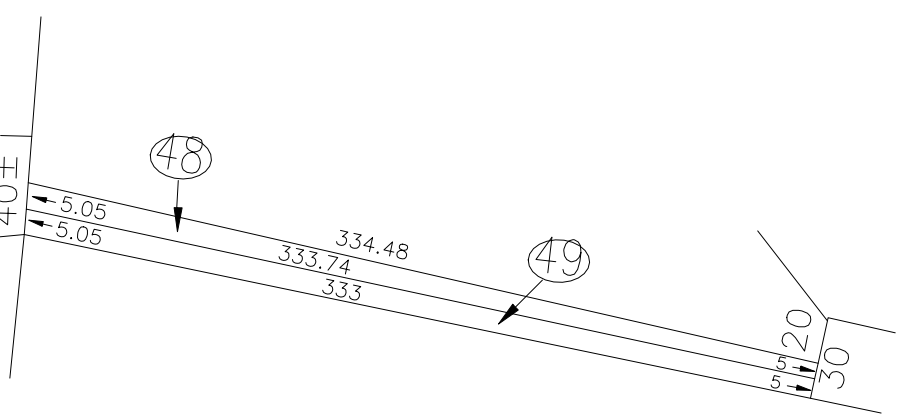
N 220,500



N 218,400

E 2,067,200

E 2,069,800



DETAIL SCALE 1" = 80'

COPYRIGHT 1988 NASSAU COUNTY

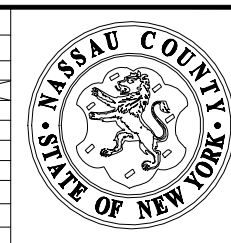
LEGEND				SPECIAL DISTRICTS				MUNICIPALITIES			
CODE	SPECIAL	DISTRICT	WITHIN	CODE	SPECIAL	DISTRICT	WITHIN	CODE	SPECIAL	DISTRICT	WITHIN
758	1	57									

<b>POLICE</b>		<b>FIRE PROTECTION</b>		<b>PUBLIC PARKING</b>		<b>DRAINAGE</b>		<b>TOWN OF: HEMPSTEAD</b>	
<b>WATER</b>		<b>SANITARY</b>		<b>SEWER</b>		<b>FIRE HYDRANT RENTAL</b>		<b>NORTH HEMPSTEAD</b>	
<b>LIGHTING</b>		<b>REFUSE &amp; GARBAGE</b>		<b>PARK</b>		<b>GARBAGE</b>		<b>OYSTER BAY</b>	
<b>LIBRARY</b>		<b>REFUSE DISPOSAL</b>		<b>Great Neck</b>	57	<b>ESCALATOR</b>		<b>CITY OF: GLEN COVE</b>	
<b>FIRE</b>		<b>SEWAGE COLLECTION</b>		<b>IMPROVEMENT</b>		<b>WATER POLLUTION CONTROL</b>		<b>LONG BEACH</b>	
				<b>SIDEWALK</b>		<b>Town, County, College, Police HQ</b>	1	<b>VILLAGE OF: Incorporated Village of Kings Point</b>	

<b>SCHOOL DISTRICT</b>		<b>SCHOOL DISTRICT</b>	
<b>Great Neck</b>	7		



Nassau County  
Department of Assessment  
Land & Tax Map

Map Last Revised July 29 2024

SEC. 1  
BLK. 176

SHEET 1 OF 1