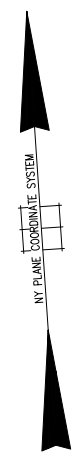


50' 25' 0' 50' 100'



SCALE: 1" = 50'

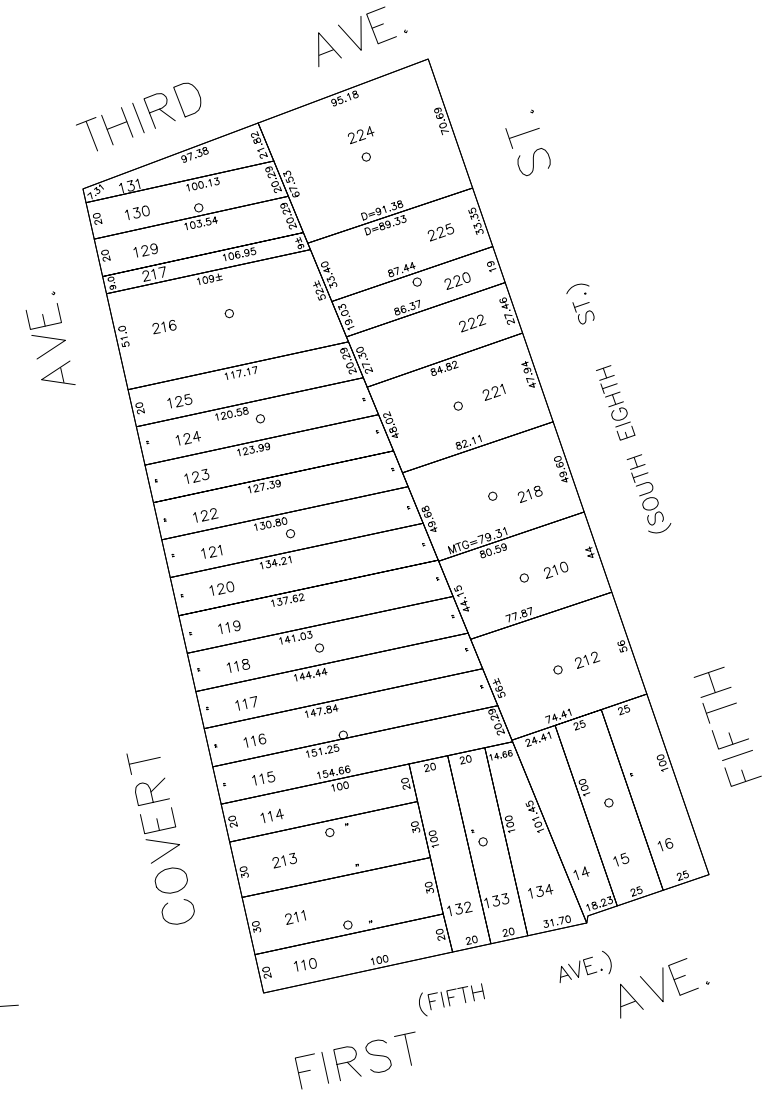
N 183,700



N 183,150

E 2,086,550

E 2,087,000



COPYRIGHT 1988 NASSAU COUNTY

LEGEND	
COUNTY LINE	---
TOWN LINE	- - - -
VILLAGE LINE	— · — · —
SCHOOL DISTRICT LINE	— · — · —
PROPERTY LINE	— · — · —
SPECIAL DISTRICT LINE	— · — · —
BLOCK LIMIT	— · — · —
LOCATOR POINT	*
TAX MAP PARCEL NO.	246
CALCULATED ACREAGE	75M(C)
DEED ACREAGE	176
SCALED DIMENSION	327(S)
DEED DIMENSION	185.89
REFERENCE MAPS	
MAP NO.	

POLICE		DIST
County Police		3
WATER		
LIGHTING		
LIBRARY		
FIRE		
New Hyde Park		70

SPECIAL DISTRICTS		DIST
FIRE PROTECTION		
SANITARY		
REFUSE & GARBAGE		
REFUSE DISPOSAL		
SEWAGE COLLECTION		
Sewage Collection District #2-NHP		H

SPECIAL DISTRICTS		DIST
PUBLIC PARKING		
SEWER		
Nassau County Sewage Disposal District #2		202
PARK		
IMPROVEMENT		
SIDEWALK		

MUNICIPALITIES		DIST
DRAINAGE		
FIRE HYDRANT RENTAL		
GARBAGE		
ESCALATOR		
WATER POLLUTION CONTROL		
Town, County, College, Police HQ		1

MUNICIPALITIES		DIST
TOWN OF: HEMPSTEAD		
NORTH HEMPSTEAD		
OYSTER BAY		
CITY OF: GLEN COVE		
LONG BEACH		
VILLAGE OF:		
SCHOOL DISTRICT		



Nassau County
Department of Assessment
Charles O'Shea, Chairman
Land & Tax Map

Map Last Revised: July 17 2002

SEC. 33
BLK. 179

SHEET 1 OF 1

CODE	SPECIAL	DISTRICT	WITHIN	CODE	SPECIAL	DISTRICT	WITHIN	CODE	SPECIAL	DISTRICT	WITHIN
391	1	202	3	70	H						