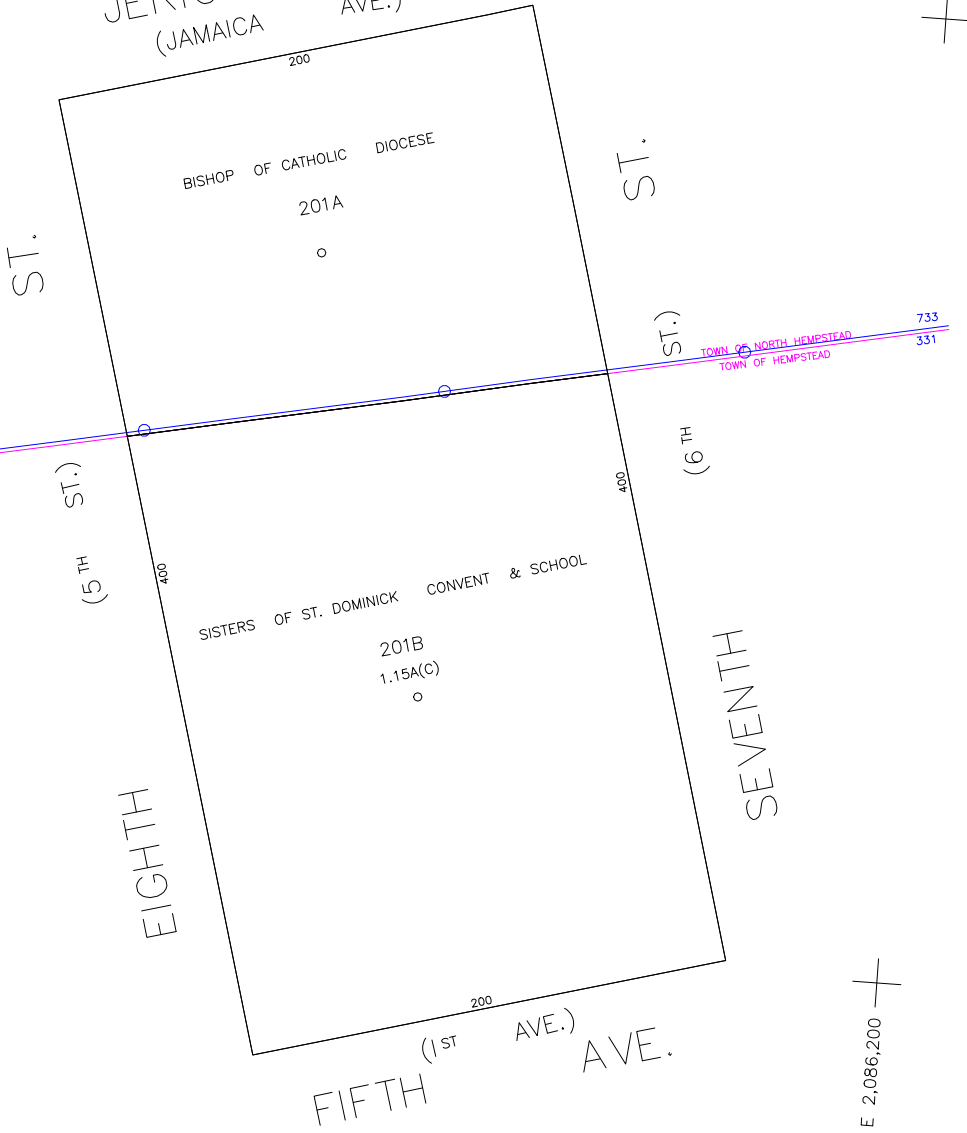




SCALE: 1" = 40'

N 184,500

JERICO TPKE.  
(JAMAICA AVE.)



N 184,100

E 2,085,800

E 2,086,200

COPYRIGHT 1998 NASSAU COUNTY

LEGEND	
COUNTY LINE	---
TOWN LINE	---
VILLAGE LINE	---
SCHOOL DISTRICT LINE	---
PROPERTY LINE	---
SPECIAL DISTRICT LINE	---
BLOCK LIMIT	---
LOCATOR POINT	*
TAX MAP PARCEL NO.	246
CALCULATED ACREAGE	754(C)
DEED ACREAGE	174
SCALED DIMENSION	327(S)
DEED DIMENSION	185.69
REFERENCE MAPS	
MAP NO.	

POLICE		DIST
County Police		3
Garden City Park		7
Town of North Hempstead		30
New Hyde Park		70
Garden City Park		43

FIRE PROTECTION		DIST
County Police		3
Garden City Park		7
Town of North Hempstead		30
New Hyde Park		70
Garden City Park		43

SPECIAL DISTRICTS		
PUBLIC PARKING		
SEWER		
Nassau County Sewage Disposal District #2		202
PARK		
New Hyde Park		66
IMPROVEMENT		
SIDEWALK		
Town of North Hempstead		8

DRAINAGE		DIST
FIRE HYDRANT RENTAL		
GARBAGE		
ESCALATOR		
WATER POLLUTION CONTROL		
Town, County, College, Police HQ		1
Town Highway		2

MUNICIPALITIES	
TOWN OF: HEMPSTEAD	
NORTH HEMPSTEAD	
OYSTER BAY	
CITY OF: GLEN COVE	
LONG BEACH	
VILLAGE OF:	
SCHOOL DISTRICT	



**Nassau County**  
**Department of Assessment**  
*Charles O'Shea, Chairman*  
**Land & Tax Map**

Map Last Revised: March 17 2003

**SEC. 32**  
**BLK. 91**

**SHEET 1 OF 1**

CODE	SPECIAL	DISTRICT	WITHIN	CODE	SPECIAL	DISTRICT	WITHIN	CODE	SPECIAL	DISTRICT	WITHIN
331	1	202	3	70	H						
699	1	2	202	3	30	43	68	7	H	8	