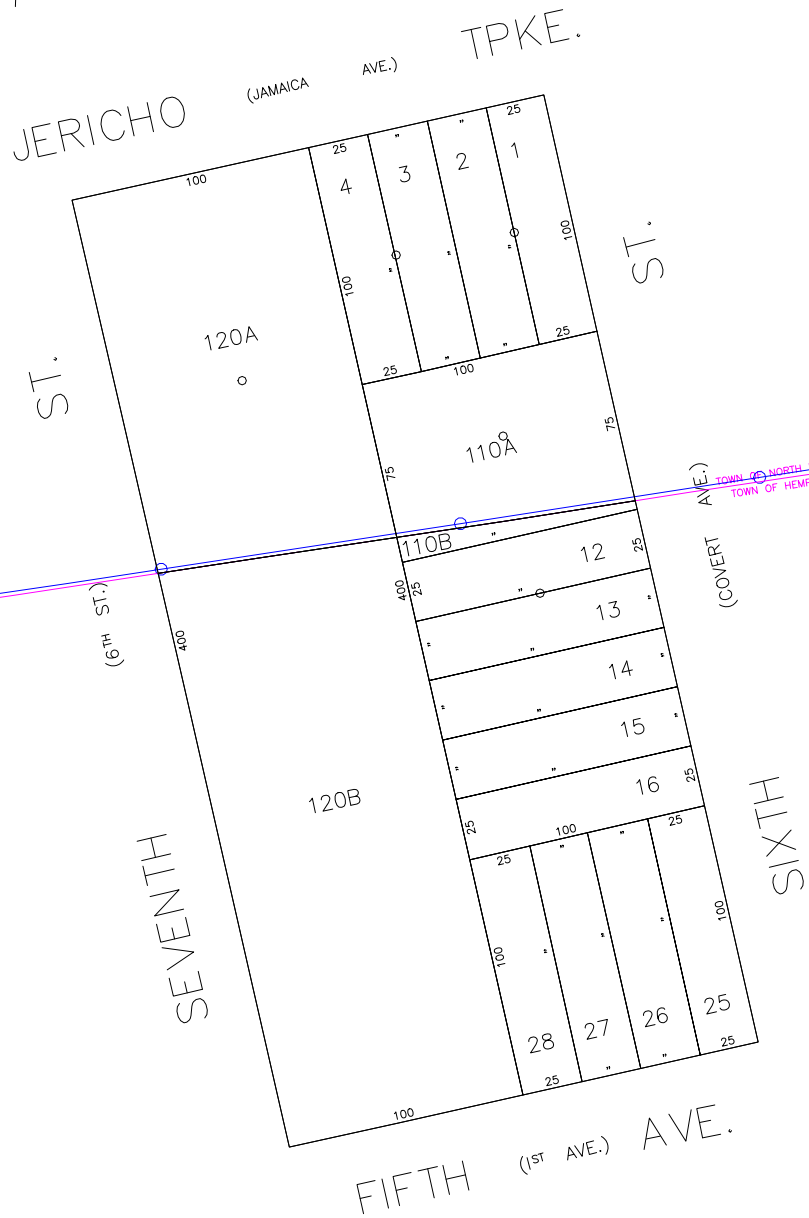


N 184,600



RC CHURCH OF THE HOLY GHOST SPIRIT  
LOT NO.S: 14, 15, 16, 25, 26, 27, 28, 120A & 120B

N 184,150  
E 2,086,050

E 2,086,450

COPYRIGHT 1998 NASSAU COUNTY

**LEGEND**

COUNTY LINE	---
TOWN LINE	- - - -
VILLAGE LINE	— · — · —
SCHOOL DISTRICT LINE	— · — · —
PROPERTY LINE	— · — · —
SPECIAL DISTRICT LINE	— · — · —
BLOCK LIMIT	— · — · —
LOCATOR POINT	*
TAX MAP PARCEL NO.	246
CALCULATED ACREAGE	754(C)
DEED ACREAGE	174
SCALED DIMENSION	327(S)
DEED DIMENSION	185.69
REFERENCE MAPS	
MAP NO.	

<b>POLICE</b>	DIST
County Police	3
<b>WATER</b>	
<b>LIGHTING</b>	
<b>LIBRARY</b>	
<b>FIRE</b>	
New Hyde Park	70
New Hyde Park	47

<b>FIRE PROTECTION</b>	DIST
<b>SANITARY</b>	
<b>REFUSE &amp; GARBAGE</b>	
<b>REFUSE DISPOSAL</b>	
<b>SEWAGE COLLECTION</b>	
Sewage Collection District #2-NHP	H

**SPECIAL DISTRICTS**

<b>PUBLIC PARKING</b>	DIST
<b>SEWER</b>	
Nassau County Sewage Disposal District #2	202
<b>PARK</b>	
New Hyde Park	66
<b>IMPROVEMENT</b>	
<b>SIDEWALK</b>	

<b>DRAINAGE</b>	DIST
<b>FIRE HYDRANT RENTAL</b>	
<b>GARBAGE</b>	
<b>ESCALATOR</b>	
<b>WATER POLLUTION CONTROL</b>	
Town, County, College, Police HQ	1

**MUNICIPALITIES**

TOWN OF: HEMPSTEAD	
NORTH HEMPSTEAD	
OYSTER BAY	
CITY OF: GLEN COVE	
LONG BEACH	
VILLAGE OF:	
SCHOOL DISTRICT	



**Nassau County**  
**Department of Assessment**  
Charles O'Shea, Chairman  
**Land & Tax Map**

Map Last Revised: March 18 2003

**SEC. 32**  
**BLK. 93**

**SHEET 1 OF 1**

CODE	SPECIAL	DISTRICT	WITHIN	CODE	SPECIAL	DISTRICT	WITHIN	CODE	SPECIAL	DISTRICT	WITHIN
381	1	202	3	70	H						
739	1	202	3	47	66	H					