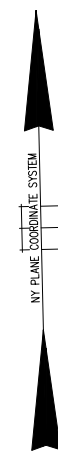
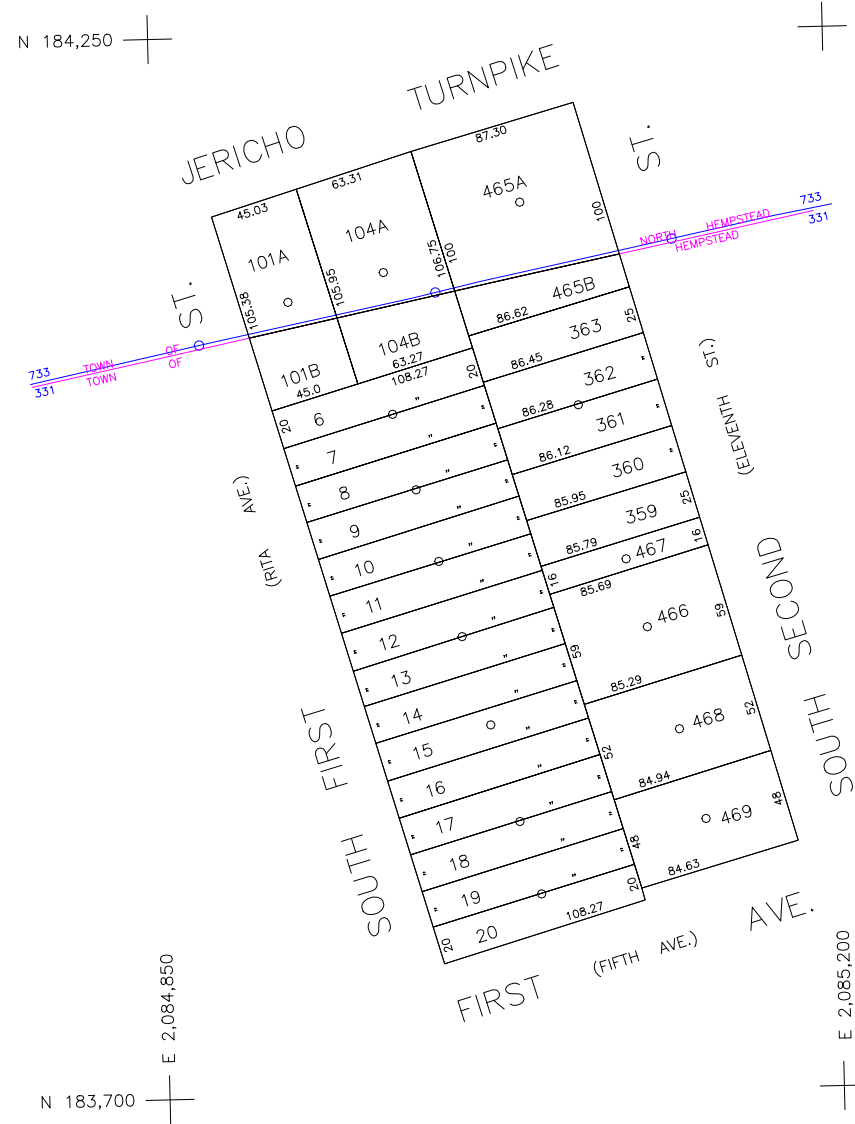


50' 25' 0' 50' 100'



SCALE: 1" = 50'



COPYRIGHT 1988 NASSAU COUNTY

LEGEND	
COUNTY LINE	---
TOWN LINE	- - - -
VILLAGE LINE	— · — · —
SCHOOL DISTRICT LINE	— · — · —
PROPERTY LINE	— · — · —
SPECIAL DISTRICT LINE	— · — · —
BLOCK LIMIT	— · — · —
LOCATOR POINT	*
TAX MAP PARCEL NO.	246
CALCULATED ACREAGE	734(C)
DEED ACREAGE	176A
SCALED DIMENSION	327(S)
DEED DIMENSION	185.69
REFERENCE MAPS	
MAP NO.	

POLICE		DIST
County Police		3
WATER		
LIGHTING		
LIBRARY		
FIRE		
New Hyde Park		70
New Hyde Park		47

SPECIAL DISTRICTS		DIST
FIRE PROTECTION		
SANITARY		
REFUSE & GARBAGE		
REFUSE DISPOSAL		
SEWAGE COLLECTION		
Sewage Collection District #2-NHP		H

SPECIAL DISTRICTS		DIST
PUBLIC PARKING		
SEWER		
Nassau County Sewage Disposal District #2		202
PARK		
New Hyde Park		66
IMPROVEMENT		
SIDEWALK		

MUNICIPALITIES		DIST
DRAINAGE		
FIRE HYDRANT RENTAL		
GARBAGE		
ESCALATOR		
WATER POLLUTION CONTROL		
Town, County, College, Police HQ		1

MUNICIPALITIES		DIST
TOWN OF: HEMPSTEAD		
NORTH HEMPSTEAD		
OSTER BAY		
CITY OF: GLEN COVE		
LONG BEACH		
VILLAGE OF:		
SCHOOL DISTRICT		



**Nassau County**  
**Department of Assessment**  
*Charles O'Shea, Chairman*  
**Land & Tax Map**

Map Last Revised: March 17 2003

**SEC. 32**  
**BLK. 641-1** SHEET 1 OF 1

CODE	SPECIAL	DISTRICT	WITHIN	CODE	SPECIAL	DISTRICT	WITHIN	CODE	SPECIAL	DISTRICT	WITHIN
331	1	202	3	70	H						
730	1	202	3	47	66	H					