

50' 25' 0' 50' 100'



SCALE: 1" = 50'

N 173,600

ROOSEVELT AVE.

O'CONNELL ST.

ST.

AVE.

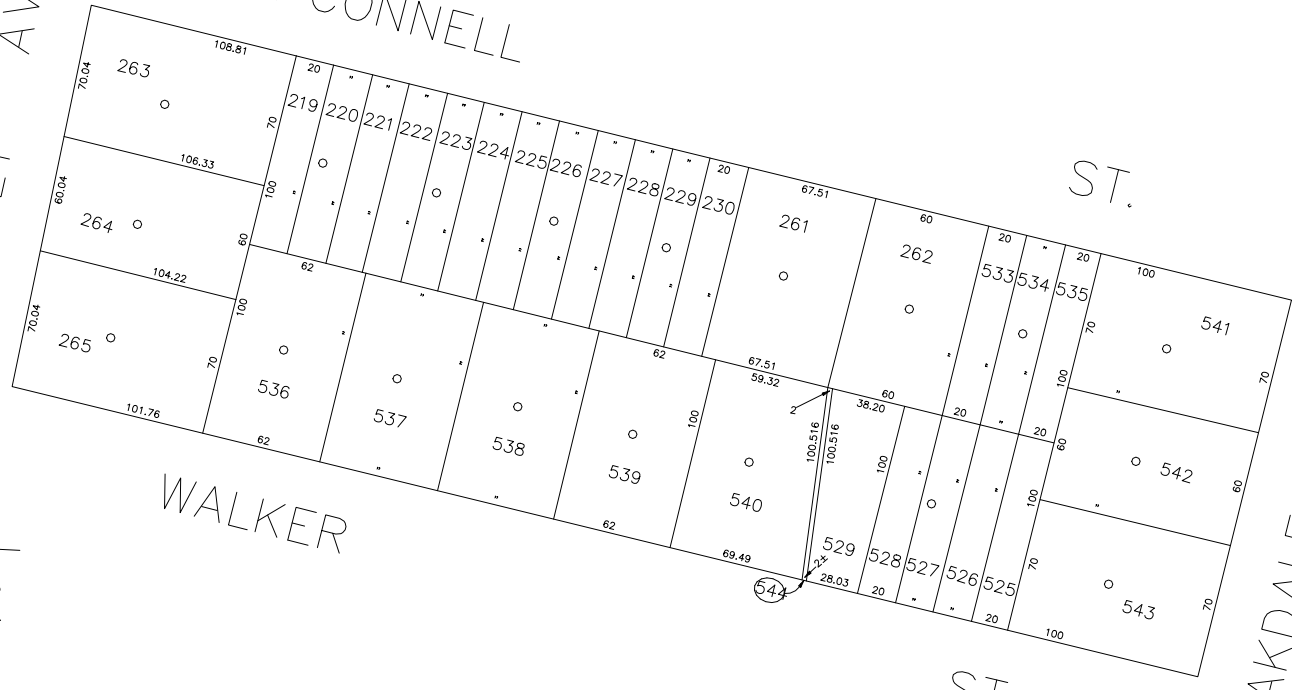
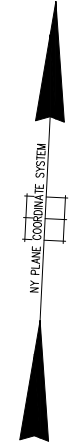
OAKDALE ST.

E 2,153,700

N 173,250

E 2,153,000

WALKER



COPYRIGHT 1988 NASSAU COUNTY

LEGEND

COUNTY LINE	---
TOWN LINE	- - - -
VILLAGE LINE	— · — · —
SCHOOL DISTRICT LINE	— · — · —
PROPERTY LINE	— · — · —
SPECIAL DISTRICT LINE	— · — · —
BLOCK LIMIT	— · — · —
LOCATOR POINT	*
TAX MAP PARCEL NO.	246
CALCULATED ACREAGE	754(C)
DEED ACREAGE	178
SCALED DIMENSION	327(S)
DEED DIMENSION	185.89
REFERENCE MAPS	
MAP NO.	

SPECIAL DISTRICTS

POLICE	DIST	
County Police	3	
WATER		
Massapequa	13	
LIGHTING		
LIBRARY		
FIRE		
Massapequa	36	

SPECIAL DISTRICTS

FIRE PROTECTION	DIST	
SANITARY		
REFUSE & GARBAGE		
REFUSE DISPOSAL		
SEWAGE COLLECTION		
Sewage Collection District #3-MP	28	
Town of Oyster Bay	65	

SPECIAL DISTRICTS

PUBLIC PARKING	DIST	
SEWER		
Nassau County Sewage Disposal District #3	39	
PARK		
IMPROVEMENT		
SIDEWALK		

SPECIAL DISTRICTS

DRAINAGE	DIST	
FIRE HYDRANT RENTAL		
GARBAGE		
Garbage District #2	53	
ESCALATOR		
WATER POLLUTION CONTROL		
Town, County, College, Police HQ	1	

MUNICIPALITIES

TOWN OF:	
HEMPSTEAD	
NORTH HEMPSTEAD	
OYSTER BAY	
CITY OF:	
GLEN COVE	
LONG BEACH	
VILLAGE OF:	
SCHOOL DISTRICT	
Farmingdale	22



Nassau County
Department of Assessment
 Charles O'Shea, Chairman
Land & Tax Map

Map Last Revised: December 6 2002

SEC. 48
BLK. 354

SHEET 1 OF 1

CODE	SPECIAL	DISTRICT	WITHIN	CODE	SPECIAL	DISTRICT	WITHIN	CODE	SPECIAL	DISTRICT	WITHIN
889	1	13	28	3	36	39	83	85			