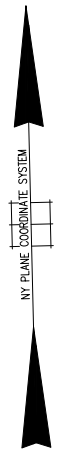


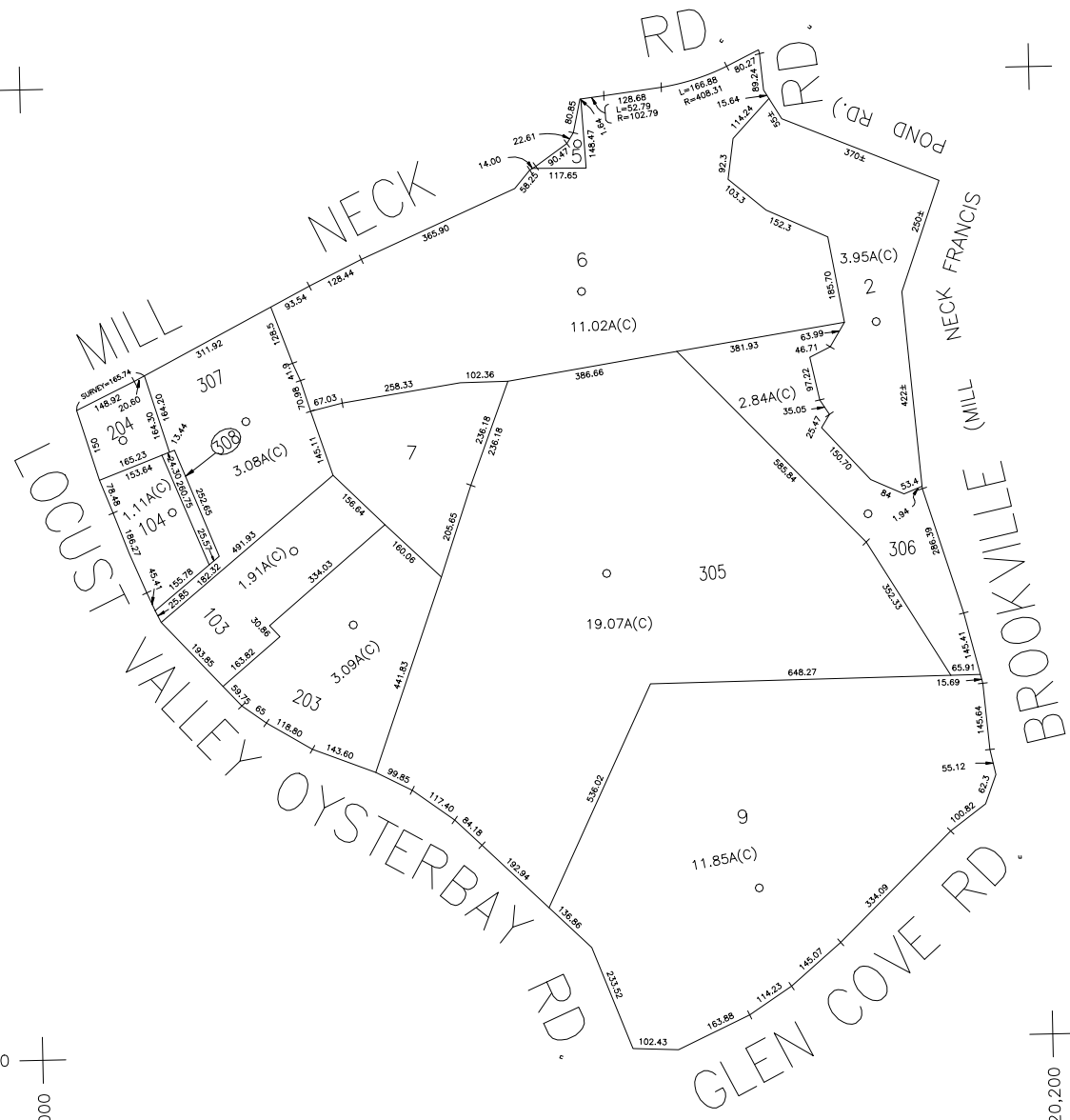
N 236,200



N 234,100

E 2,118,000

E 2,120,200



COPYRIGHT 1988 NASSAU COUNTY

LEGEND	
COUNTY LINE	---
TOWN LINE	---
VILLAGE LINE	---
SCHOOL DISTRICT LINE	---
PROPERTY LINE	---
SPECIAL DISTRICT LINE	---
BLOCK LIMIT	---
LOCATOR POINT	○
TAX MAP PARCEL NO.	*
CALCULATED ACREAGE	246
DEED ACREAGE	754(C)
SCALED DIMENSION	178
DEED DIMENSION	327(S)
REFERENCE MAPS	185.89
MAP NO.	

POLICE	
WATER	Locust Valley
LIGHTING	
LIBRARY	
FIRE	Locust Valley

SPECIAL DISTRICTS	
FIRE PROTECTION	
SANITARY	
REFUSE & GARBAGE	
REFUSE DISPOSAL	
SEWAGE COLLECTION	

SPECIAL DISTRICTS	
PUBLIC PARKING	
SEWER	
PARK	
IMPROVEMENT	
SIDEWALK	

MUNICIPALITIES	
DRAINAGE	
FIRE HYDRANT RENTAL	
ESCALATOR	
WATER POLLUTION CONTROL	

MUNICIPALITIES	
TOWN OF:	
HEMPSTEAD	
NORTH HEMPSTEAD	
OYSTER BAY	
CITY OF:	
GLEN COVE	
LONG BEACH	
VILLAGE OF:	
SCHOOL DISTRICT	
Locust Valley	4



Nassau County
Department of Assessment
 Charles O'Shea, Chairman
Land & Tax Map

Map Last Revised: February 3 2003

SEC. 29
BLK. S

SHEET 1 OF 1

CODE	SPECIAL	DISTRICT	WITHIN	CODE	SPECIAL	DISTRICT	WITHIN	CODE	SPECIAL	DISTRICT	WITHIN
818	1	12	36	47							