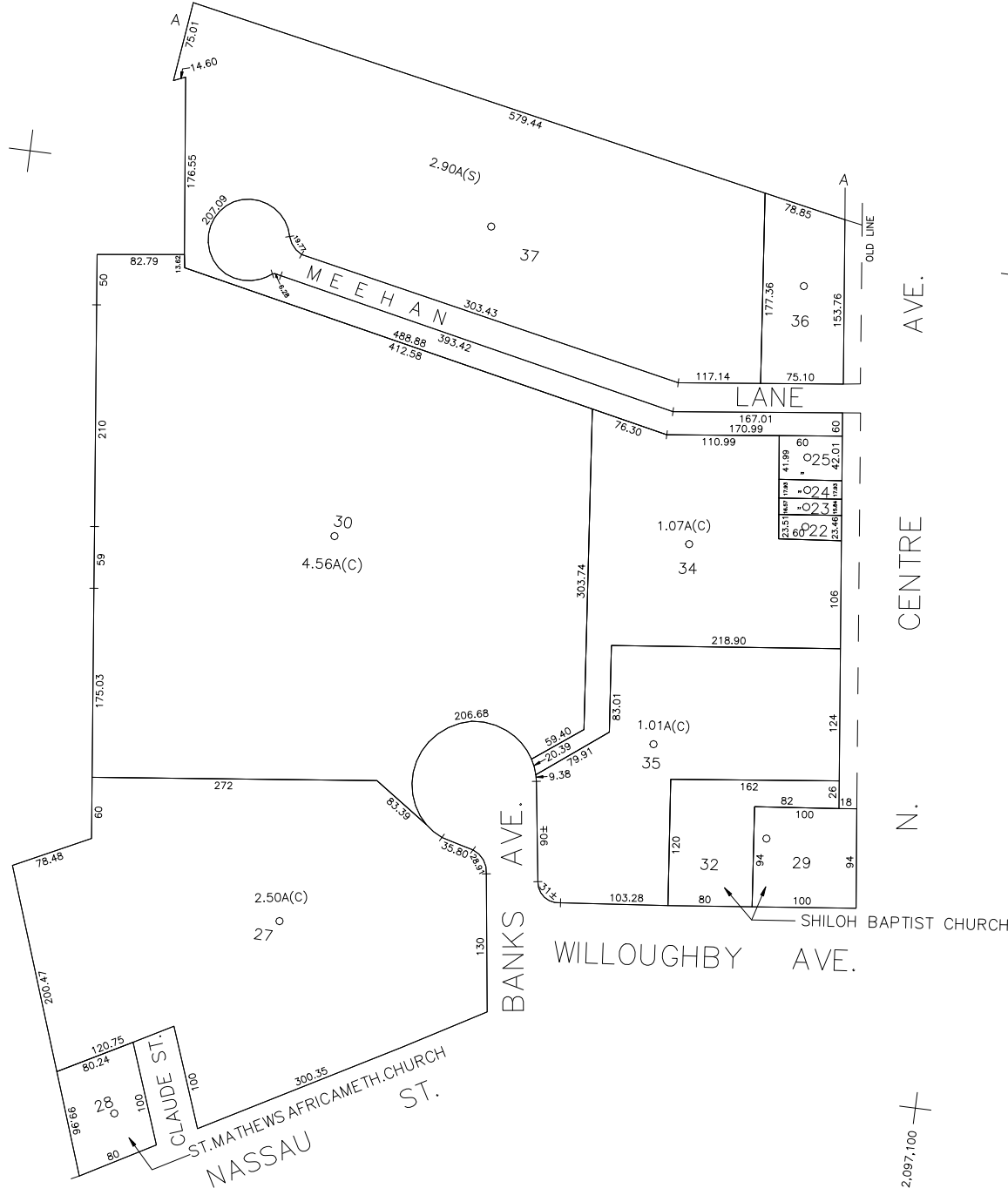


N 159,100

BLK. C

N 158,300  
E 2,096,150



N.

E 2,097,100

**LEGEND**

COUNTY LINE	---
TOWN LINE	- - - -
VILLAGE LINE	— · — · —
SCHOOL DISTRICT LINE	— · — · —
PROPERTY LINE	— · — · —
SPECIAL DISTRICT LINE	— · — · —
BLOCK LIMIT	— · — · —
LOCATOR POINT	*
TAX MAP PARCEL NO.	246
CALCULATED ACREAGE	754(C)
DEED ACREAGE	174
SCALED DIMENSION	327(S)
DEED DIMENSION	185.69
REFERENCE MAPS	
MAP NO.	

SPECIAL DISTRICT	WITHIN
POLICE	
WATER	
LIGHTING	
LIBRARY	
FIRE	

**SPECIAL DISTRICTS**

SPECIAL DISTRICT	WITHIN
FIRE PROTECTION	
SANITARY	
REFUSE & GARBAGE	
REFUSE DISPOSAL	
SEWAGE COLLECTION	

**SPECIAL DISTRICTS**

SPECIAL DISTRICT	WITHIN
PUBLIC PARKING	
SEWER	Nassau County Sewage Disposal District #2
PARK	
IMPROVEMENT	
SIDEWALK	

**SPECIAL DISTRICTS**

SPECIAL DISTRICT	WITHIN
DRAINAGE	
FIRE HYDRANT RENTAL	
GARBAGE	
ESCALATOR	
WATER POLLUTION CONTROL	Town, County, College, Police HQ

**MUNICIPALITIES**

MUNICIPALITY	WITHIN
TOWN OF: HEMPSTEAD	
NORTH HEMPSTEAD	
OYSTER BAY	
CITY OF: GLEN COVE	
LONG BEACH	
VILLAGE OF:	
SCHOOL DISTRICT	
Rockville Centre	21



**Nassau County**  
**Department of Assessment**  
Charles O'Shea, Chairman  
**Land & Tax Map**

Map Last Revised: March 25 2003

**SEC. 38**  
**BLK. 539**

**SHEET 2 OF 2**

CODE	SPECIAL DISTRICT	WITHIN	CODE	SPECIAL DISTRICT	WITHIN	CODE	SPECIAL DISTRICT	WITHIN
401	1	202						