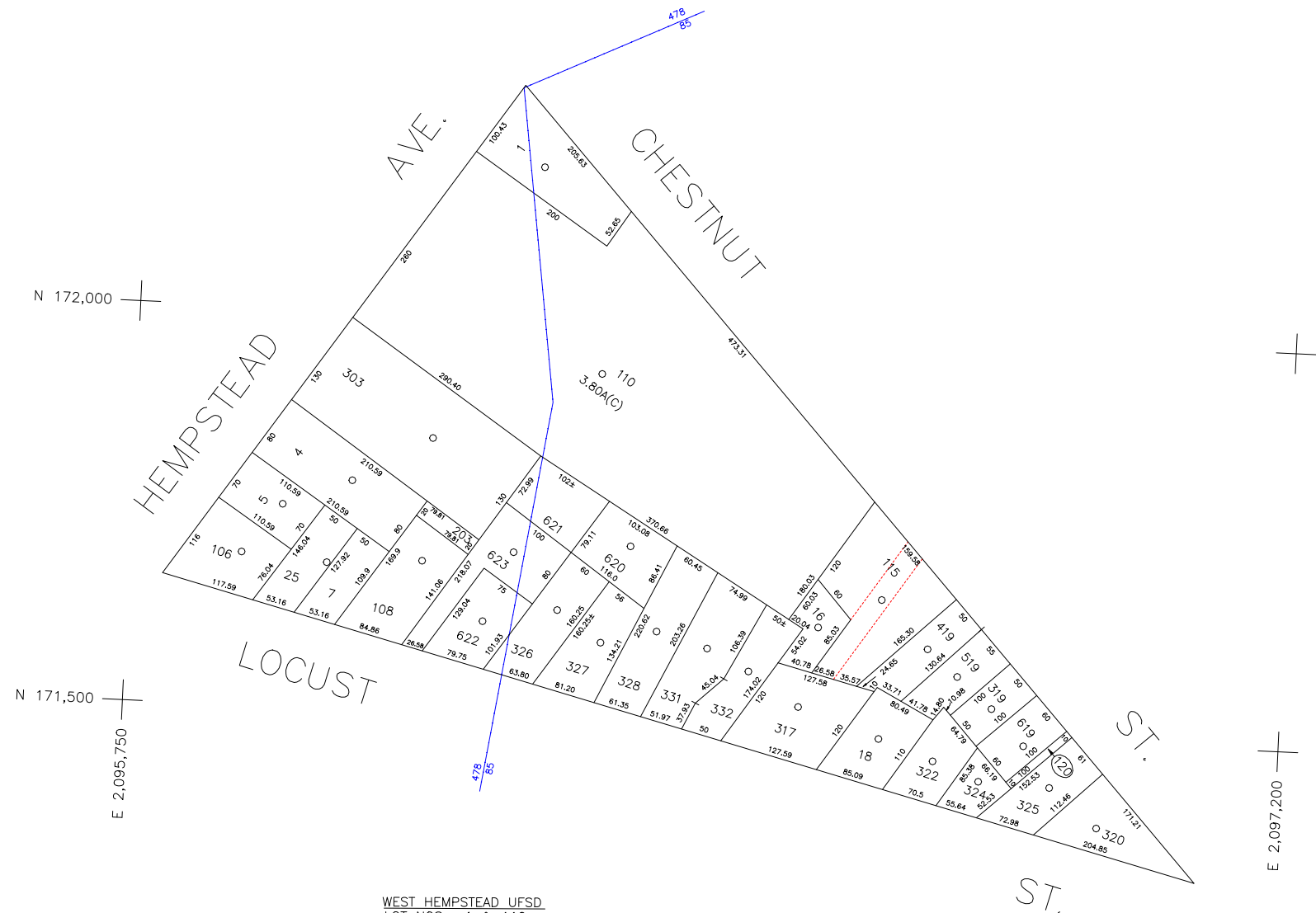


COPYRIGHT 1988 NASSAU COUNTY



WEST HEMPSTEAD UFSO  
LOT NOS : 1 & 110.  
TRINITY LUTHERAN CHURCH  
LOT NO : 115.

LEGEND	
COUNTY LINE	---
TOWN LINE	----
VILLAGE LINE	-----
SCHOOL DISTRICT LINE	-----
PROPERTY LINE	-----
SPECIAL DISTRICT LINE	-----
BLOCK LIMIT	-----
LOCATOR POINT	*
TAX MAP PARCEL NO.	246
CALCULATED ACREAGE	754(C)
DEED ACREAGE	174
SCALED DIMENSION	327(S)
DEED DIMENSION	185.69
REFERENCE MAPS	
MAP NO.	

POLICE		DIST
County Police		3
WATER		
West Hempstead - Hempstead Gardens		8
LIGHTING		
Town of Hempstead		47
LIBRARY		
West Hempstead		80

FIRE PROTECTION		DIST
SANITARY		
Sanitary District 8		93
REFUSE & GARBAGE		
REFUSE DISPOSAL		
Town of Hempstead		X
SEWAGE COLLECTION		
Sewage Collection District #2-ELM		J
Sewage Collection District #2-FS		C

PUBLIC PARKING		DIST
West Hempstead		W
SEWER		
Nassau County Sewage Disposal District #2		202
PARK		
Town of Hempstead		V
IMPROVEMENT		
SIDEWALK		

DRAINAGE		DIST
FIRE HYDRANT RENTAL		
GARBAGE		
ESCALATOR		
WATER POLLUTION CONTROL		
Town, County, College, Police HQ		1
Town Building Dept, Zoning & Appeals, Unincorporated Area		2

MUNICIPALITIES	
TOWN OF:	
HEMPSTEAD	
NORTH HEMPSTEAD	
OYSTER BAY	
CITY OF:	
GLEN COVE	
LONG BEACH	
VILLAGE OF:	
SCHOOL DISTRICT	
West Hempstead	27



**Nassau County**  
**Department of Assessment**  
Charles O'Shea, Chairman  
**Land & Tax Map**

Map Last Revised: March 20 2003

**SEC. 35**  
**BLK. 398**

**SHEET 1 OF 1**

CODE	SPECIAL	DISTRICT	WITHIN	CODE	SPECIAL	DISTRICT	WITHIN	CODE	SPECIAL	DISTRICT	WITHIN	
085	1	2	202	3	47	8	80	89	J	V	W	X
478	1	2	202	3	47	8	80	89	C	V	W	X