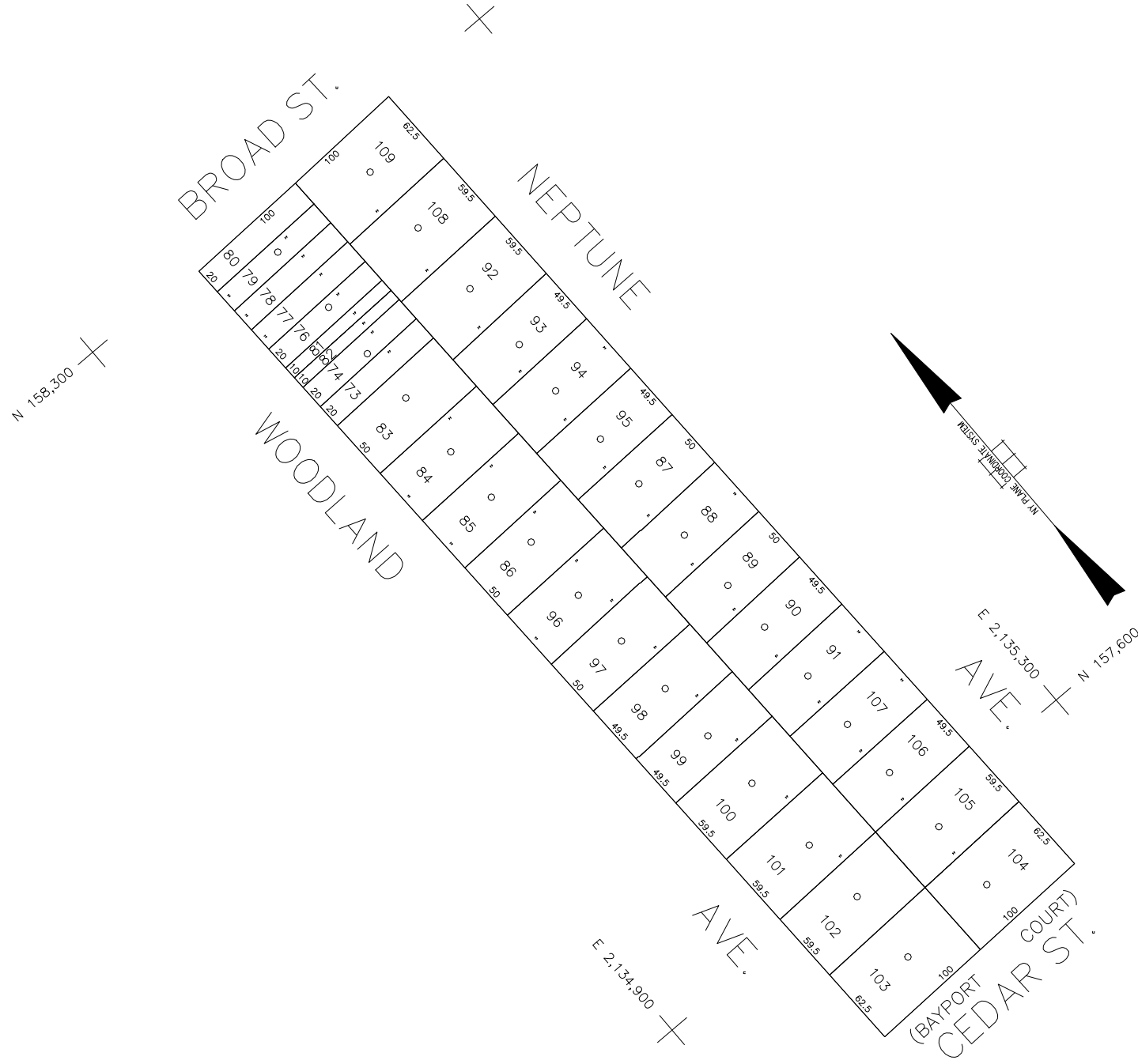


60' 30' 0' 60' 120'



SCALE: 1" = 60'



COPYRIGHT 1988 NASSAU COUNTY

LEGEND	
COUNTY LINE	---
TOWN LINE	- - - -
VILLAGE LINE
SCHOOL DISTRICT LINE
PROPERTY LINE	-----
SPECIAL DISTRICT LINE	-----
BLOCK LIMIT	-----
LOCATOR POINT	*
TAX MAP PARCEL NO.	246
CALCULATED ACREAGE	754(C)
DEED ACREAGE	174
SCALED DIMENSION	327(S)
DEED DIMENSION	185.89
REFERENCE MAPS	
MAP NO.	

POLICE		DIST
County Police		3
WATER		
LIGHTING		
Town of Hempstead		47
LIBRARY		
Wieragh		78

FIRE PROTECTION		DIST
SANITARY		
REFUSE & GARBAGE		
Town of Hempstead		L
REFUSE DISPOSAL		
Town of Hempstead		X
SEWAGE COLLECTION		
Sewage Collection District #3-MH		28

SPECIAL DISTRICTS		
PUBLIC PARKING		
SEWER		
Nassau County Sewage Disposal District #3		30
PARK		
Town of Hempstead		V
IMPROVEMENT		
SIDEWALK		

DRAINAGE		DIST
FIRE HYDRANT RENTAL		
GARBAGE		
ESCALATOR		
WATER POLLUTION CONTROL		
Town, County, College, Police HD		1
Town Building Dept. Zoning & Appeals, Unincorporated Area		2

MUNICIPALITIES	
TOWN OF: HEMPSTEAD	
NORTH HEMPSTEAD	
OYSTER BAY	
CITY OF: GLEN COVE	
LONG BEACH	
VILLAGE OF:	
SCHOOL DISTRICT	
Wieragh	23



Nassau County
Department of Assessment
Charles O'Shea, Chairman
Land & Tax Map

Map Last Revised: September 25 2002

SEC. 63
BLK. 11

SHEET 1 OF 1

CODE	SPECIAL	DISTRICT	WITHIN	CODE	SPECIAL	DISTRICT	WITHIN	CODE	SPECIAL	DISTRICT	WITHIN
125	1	2	28	3	30	47	78	L	V	X	