

N 158,500

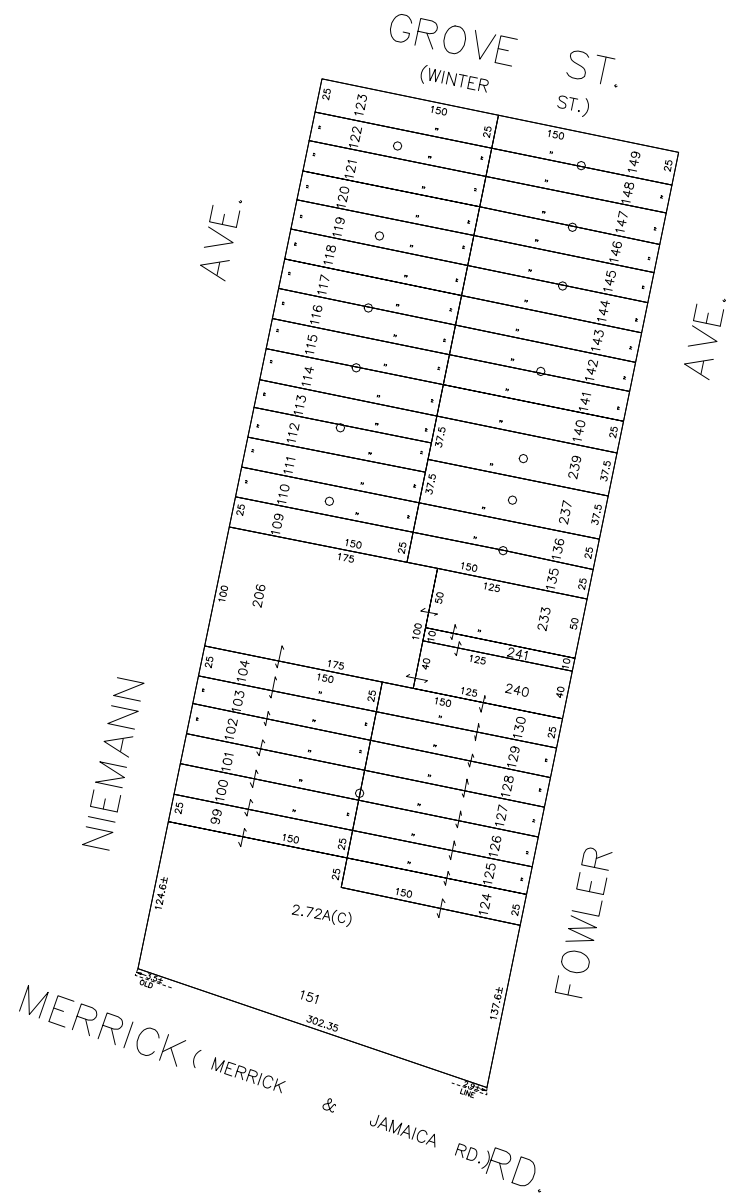
N 158,000

E 2,089,500

+

+

E 2,090,300



R.C.CHURCH OF OUR LADY OF PEACE  
LOT NOS: 99,100,104,124 TO 130,  
151,206,233,240 & 241.

COPYRIGHT 1988 NASSAU COUNTY

**LEGEND**

COUNTY LINE	---
TOWN LINE	- - - -
VILLAGE LINE	— · — · — ·
SCHOOL DISTRICT LINE	— · — · — ·
PROPERTY LINE	— · — · — ·
SPECIAL DISTRICT LINE	— · — · — ·
BLOCK LIMIT	— · — · — ·
LOCATOR POINT	*
TAX MAP PARCEL NO.	246
CALCULATED ACREAGE	75A(C)
DEED ACREAGE	178
SCALED DIMENSION	327(S)
DEED DIMENSION	185.89
REFERENCE MAPS	
MAP NO.	

<b>POLICE</b>			
<b>WATER</b>			
<b>LIGHTING</b>			
<b>LIBRARY</b>			
<b>FIRE</b>			

**SPECIAL DISTRICTS**

<b>FIRE PROTECTION</b>			
<b>SANITARY</b>			
<b>REFUSE &amp; GARBAGE</b>			
<b>REFUSE DISPOSAL</b>			
<b>SEWAGE COLLECTION</b>			
Sewage Collection District #2-ELM	J		

**SPECIAL DISTRICTS**

<b>PUBLIC PARKING</b>			
<b>SEWER</b>			
Nassau County Sewage Disposal District #2	202		
<b>PARK</b>			
<b>IMPROVEMENT</b>			
<b>SIDEWALK</b>			

<b>DRAINAGE</b>			
<b>FIRE HYDRANT RENTAL</b>			
<b>GARBAGE</b>			
<b>ESCALATOR</b>			
<b>WATER POLLUTION CONTROL</b>			
Town, County, College, Police HQ		1	

**MUNICIPALITIES**

TOWN OF:		
HEMPSTEAD		
NORTH HEMPSTEAD		
OYSTER BAY		
CITY OF:		
GLEN COVE		
LONG BEACH		
VILLAGE OF:		
SCHOOL DISTRICT		
Lynbrook		20



**Nassau County**  
**Department of Assessment**  
Charles O'Shea, Chairman  
**Land & Tax Map**

Map Last Revised: August 27 2002

**SEC. 37**  
**BLK. 319**

**SHEET 1 OF 1**

CODE	SPECIAL	DISTRICT	WITHIN	CODE	SPECIAL	DISTRICT	WITHIN	CODE	SPECIAL	DISTRICT	WITHIN
202	1	202	J								