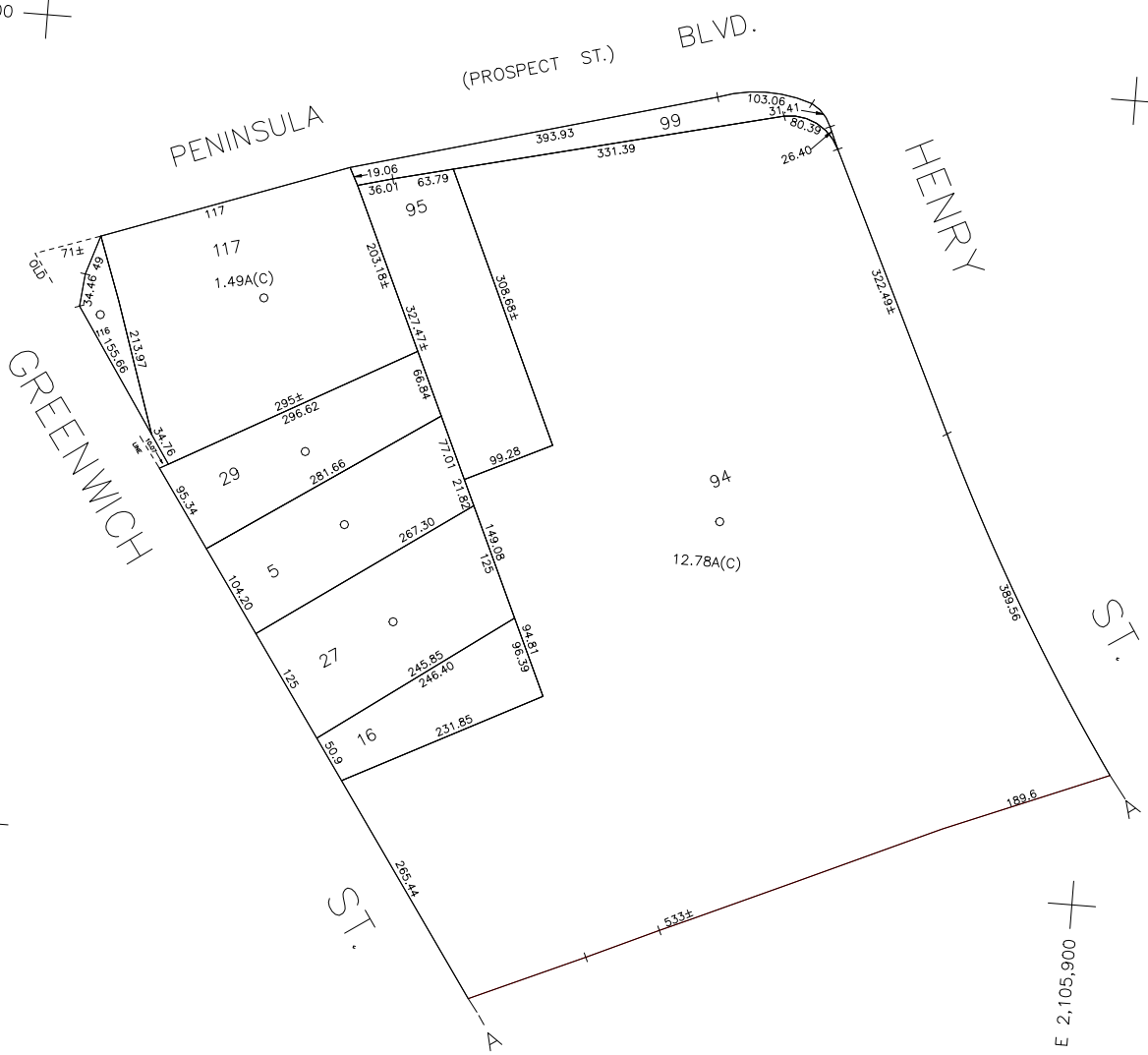


N 175,200



ST. GEORGE'S EPISCOPAL CHURCH  
LOT NOS: 117

INC. VILLAGE OF HEMPSTEAD  
LOT NOS: 116

HEMPSTEAD SD  
LOT NOS: 16,94,95,&99

N 174,350  
E 2,104,750

E 2,105,900

NY PLANE COORDINATE SYSTEM

**LEGEND**

COUNTY LINE	---
TOWN LINE	- - - -
VILLAGE LINE	— · — · —
SCHOOL DISTRICT LINE	— · — · —
PROPERTY LINE	— · — · —
SPECIAL DISTRICT LINE	— · — · —
BLOCK LIMIT	— · — · —
LOCATOR POINT	*
TAX MAP PARCEL NO.	246
CALCULATED ACREAGE	75A(C)
DEED ACREAGE	174
SCALED DIMENSION	327(S)
DEED DIMENSION	185.89
REFERENCE MAPS	
MAP NO.	

**SPECIAL DISTRICTS**

POLICE		
WATER		
LIGHTING		
LIBRARY		
FIRE		

**SPECIAL DISTRICTS**

FIRE PROTECTION		
SANITARY		
REFUSE & GARBAGE		
REFUSE DISPOSAL		
LIBRARY		X
SEWAGE COLLECTION		

**SPECIAL DISTRICTS**

PUBLIC PARKING		
SEWER		
Nassau County Sewage Disposal District #2	202	
PARK		
IMPROVEMENT		
SIDEWALK		

**SPECIAL DISTRICTS**

DRAINAGE		
FIRE HYDRANT RENTAL		
GARBAGE		
ESCALATOR		
WATER POLLUTION CONTROL		
Town, County, College, Police HQ		1

**MUNICIPALITIES**

TOWN OF:	
HEMPSTEAD	
NORTH HEMPSTEAD	
OYSTER BAY	
CITY OF:	
GLEN COVE	
LONG BEACH	
VILLAGE OF:	
SCHOOL DISTRICT	
Hempstead	1



**Nassau County**  
**Department of Assessment**  
Charles O'Shea, Chairman  
**Land & Tax Map**

Map Last Revised: March 20 2003

**SEC. 34**  
**BLK. 357**

**SHEET 1 OF 2**

CODE	SPECIAL	DISTRICT	WITHIN	CODE	SPECIAL	DISTRICT	WITHIN	CODE	SPECIAL	DISTRICT	WITHIN
399	1	202	X								