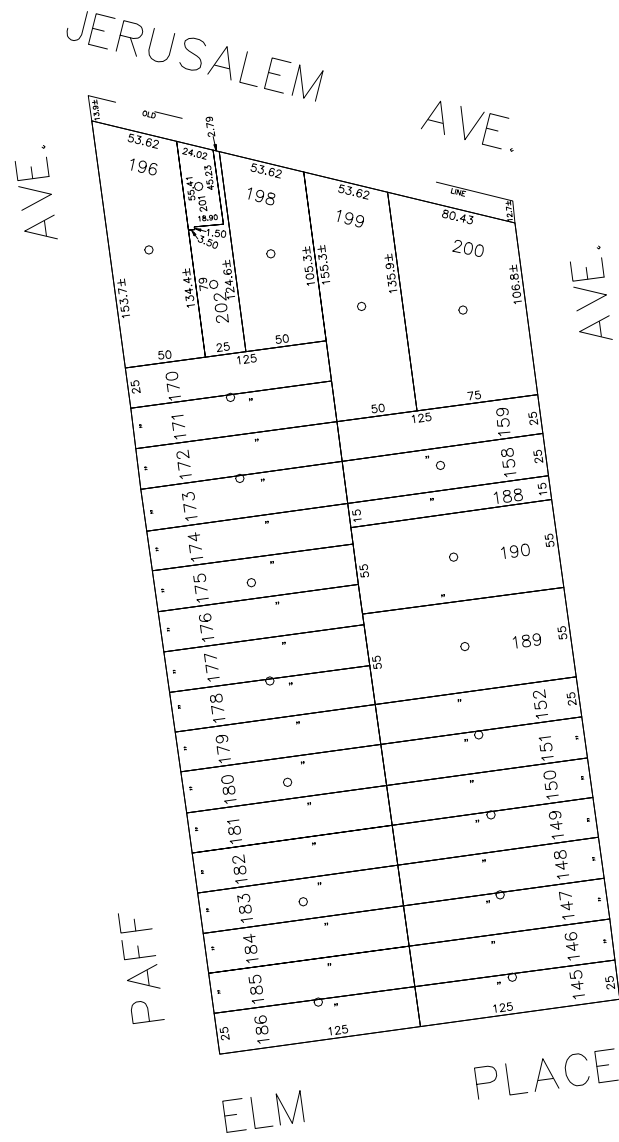


N 173,800



E 2,110,900

N 173,200  
E 2,110,350



COPYRIGHT 1988 NASSAU COUNTY

**LEGEND**

COUNTY LINE	---
TOWN LINE	- - - -
VILLAGE DISTRICT LINE	— · — · —
SCHOOL DISTRICT LINE	— · — · —
PROPERTY LINE	— · — · —
SPECIAL DISTRICT LINE	— · — · —
BLOCK LIMIT	— · — · —
LOCATOR POINT	*
TAX MAP PARCEL NO.	246
CALCULATED ACREAGE	754(C)
DEED ACREAGE	174
SCALED DIMENSION	327(S)
DEED DIMENSION	185.89
REFERENCE MAPS	
MAP NO.	

**POLICE**

County Police	3
Uninc. State	
<b>WATER</b>	
Uninc. State	7
<b>LIGHTING</b>	
Town of Hempstead	47
<b>LIBRARY</b>	
Uninc. State	36
<b>FIRE</b>	
Uninc. State	77

**SPECIAL DISTRICTS**

<b>FIRE PROTECTION</b>	
<b>SANITARY</b>	
<b>REFUSE &amp; GARBAGE</b>	
Town of Hempstead	L
<b>REFUSE DISPOSAL</b>	
Town of Hempstead	X
<b>SEWAGE COLLECTION</b>	
Sewage Collection District #2-RU	U

**SPECIAL DISTRICTS**

<b>PUBLIC PARKING</b>	
Uninc. State	38
<b>SEWER</b>	
Nassau County Sewage Disposal District #2	202
<b>PARK</b>	
Town of Hempstead	V
<b>IMPROVEMENT</b>	
<b>SIDEWALK</b>	

**MUNICIPALITIES**

<b>DRAINAGE</b>	
<b>FIRE HYDRANT RENTAL</b>	
<b>GARBAGE</b>	
<b>ESCALATOR</b>	
<b>WATER POLLUTION CONTROL</b>	
Town, County, College, Police HQ	1
Town Building Dept, Zoning & Appeals, Unincorporated Area	2

**MUNICIPALITIES**

TOWN OF:	
Hempstead	
North Hempstead	
Oyster Bay	
City of:	
Glenn Cove	
Long Beach	
Village of:	
<b>SCHOOL DISTRICT</b>	
Uninc. State	2



**Nassau County**  
**Department of Assessment**  
Charles O'Shea, Chairman  
**Land & Tax Map**

Map Last Revised: July 16 2002

**SEC. 36**  
**BLK. 110**

**SHEET 1 OF 1**

CODE	SPECIAL	DISTRICT	WITHIN	CODE	SPECIAL	DISTRICT	WITHIN	CODE	SPECIAL	DISTRICT	WITHIN		
219	1	2	202	3	36	36	47	7	77	L	U	V	X